

SOLD

GREAT LOCATION, GREAT HOUSE ON A LARGE 668 M² OFFERS OVER \$350,000

Family home in a quiet street. Prime location in the heart of Beenleigh and so convenient to Trinity College, St Joseph's School, Beenleigh State High School. Aldi, Beenleigh Marketplace, clubs, train station, recreational parks and much, much more.

Set on a large 668 m² parcel of land this solid 3 bedroom "Hi-Set" with functional kitchen, aircon in the master and loungeroom, polished timber floors, a practical bathroom and a separate toilet upstairs. Downstairs has a near new bathroom, kitchenette, huge storage area, double garage, extra double car accommodation, with side access. This home is perfect for the extended family.

Don't miss this excellent one and only opportunity.

The house currently has exceptional tenants who keep the property clean, neat, and tidy. Their lease expires in October, and they wish to stay on.

3 BED | 2 BATH | 4 CAR

PRICE:
\$350,000

OPEN FOR INSPECTION:
N/A






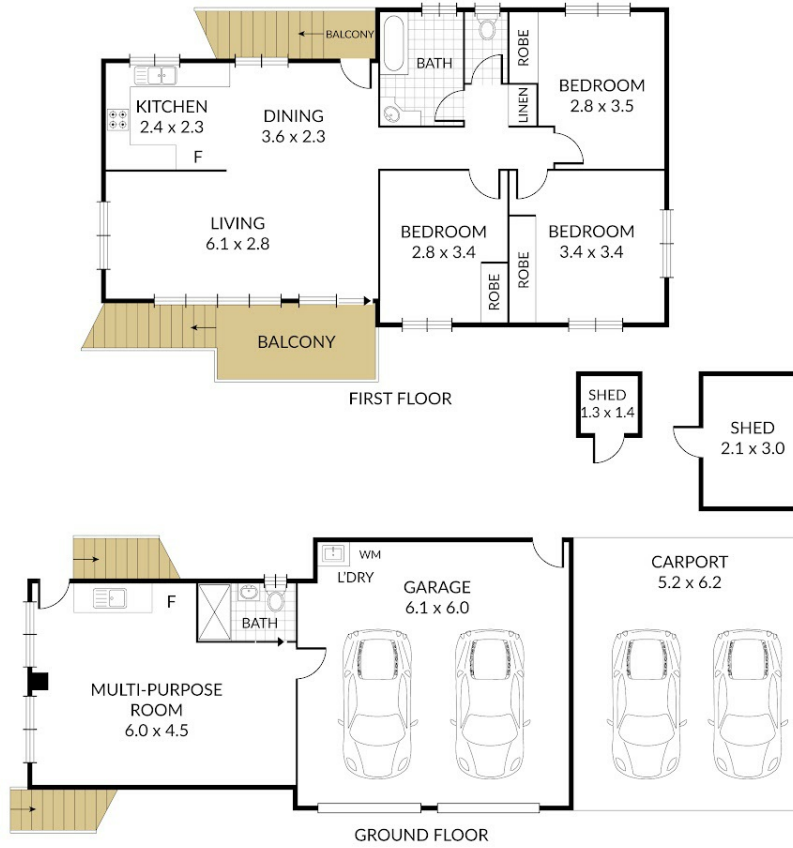
Phill Healey
0414452244
phill.healey@atrealty.com.au
www.atrealty.com.au

Internal 166m² External 47m² Total 213m²

6 Oddie Road, **Beenleigh** 

NORTH

3 x  2 x  4 x 



NOTE: Every precaution has been taken to verify the accuracy of the above details. However, prospective purchasers are advised to make their own enquiries.

Disclaimer: Please note this floor plan is for marketing purposes and is to be used as a guide only. All dimensions are estimates only and may not be exact measurements.