


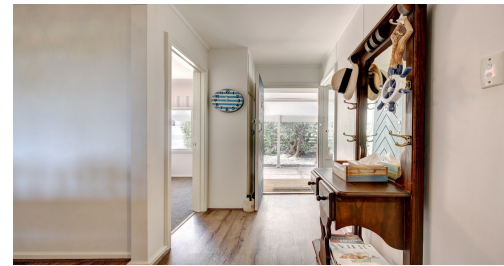
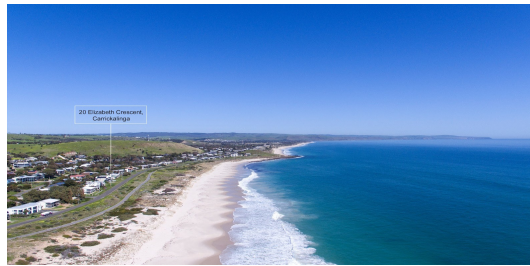


# Sold

3  | 1  | 1 

20 ELIZABETH CRESCENT, CARRICKALINGA, SA, 5204

ANSELL  
Real Estate



## A HOLIDAY HAVEN

Set in the incredibly sought after and tightly held North Bay just seconds to the pristine waters of one of South Australia premier beaches this cute beach house oozes the charm and character you are looking for.

Sea views from multiple view points in the main bedroom and both entertaining decks will give the lucky buyers of this holiday haven the ultimate place to come and unwind and relax. Comprising of a functional three bedroom one bathroom floorplan all on top a generous 720m2 approx allotment there is room to move whilst remaining low maintenance.

A short drive into the vibrant township or Normanville where you will find cafes, eateries, pubs and boutique stores where you can find all you need. Soak up the sun at the Normanville Hotel and take in the quaint holiday village vibes.

What we love about the property:

- Located in the exclusive North Bay precinct just one street back from the beach
- Affordable entry into one of the most sought after beachside locales in the state
- Updated throughout with nothing left to do
- Multiple entertaining decks with sea views
- Magnificent outlook from the master bedroom
- Well proportioned lawn area for the kids to play
- Walk to the beach in 60 seconds
- A great place to live, holiday or invest in the booming holiday leasing industry

PRICE:  
\$821,000

OPEN FOR INSPECTION:  
N/A

# Callum Ansell // 0468671665

callum@ansellrealestate.com.au // [www.ansellrealestate.com.au](http://www.ansellrealestate.com.au) // RLA 305012

