



SOLD

WHEN SCALE AND BALANCE MEET...

When scale and balance meet, you have the perfect family home. Prepare to have your breath completely taken away as you step inside the front gate of this stunning modern take on a Queenslander. Elevated from street level and with views to Cabbage Tree Creek and across Sandgate Golf Course, you will have breezes all year round. With all the trimming of a well-built home, the pool, backyard, and garden area are of family-friendly proportions. A beautiful Arbor leads you into the rear garden wonderland, filled with vegetables, herb beds, productive fruit trees, a chicken coup, and a quaint garden shed, plus there is still room for the kids and pets to play! The generous sparkling inground pool framed by the well-established gardens gives you a sense of privacy that is hard to achieve these days.

Large rooms, wide hallways, numerous spacious decks, wrap-around veranda. All of the creature comforts you could possibly hope for are ready and waiting for you to enjoy this wonderful lifestyle infused home. Get creative in the enormous light-filled kitchen, sleep well in the large bedrooms, be social often in the multiple living areas. The neutral tones throughout enhance the feeling of light and space. Wrap-around verandas on both levels capture refreshing Bay breezes. Or if you'd prefer, enjoy the ducted air-con throughout the entire home.

The well-executed inside-out flow of the floorplan lends itself beautifully and efficiently for family living and entertaining. With three bedrooms up and two bedrooms down, the downstairs level could be utilised as guest/teenager/granny flat accommodation with the laundry being large enough to include some kitchen amenities.

GARDEN WONDERLAND

The enormity and generosity of this garden needs to be seen to be believed. It gives great privacy to your Harvest your own fresh, home-grown fruit, herbs and vegetables. With multiple established fruit trees (including lime, mulberry, olive), garden beds, a chicken coup, shade house, and a quaint garden shed, all the inspiration you need to grow your own food is right here!

What the current owners love... "We just love the openness and how light flooded the home giving it a holiday home feeling, especially when returning from a long day at work. We also enjoyed how close everything was and made it a fabulous location to raise our family. Also hosting a few or many across all seasons added to many fond memories created over the years."

THE HOME:

5 BED | 2 BATH | 2 CAR

PRICE:
\$1,710,000

OPEN FOR INSPECTION:
N/A

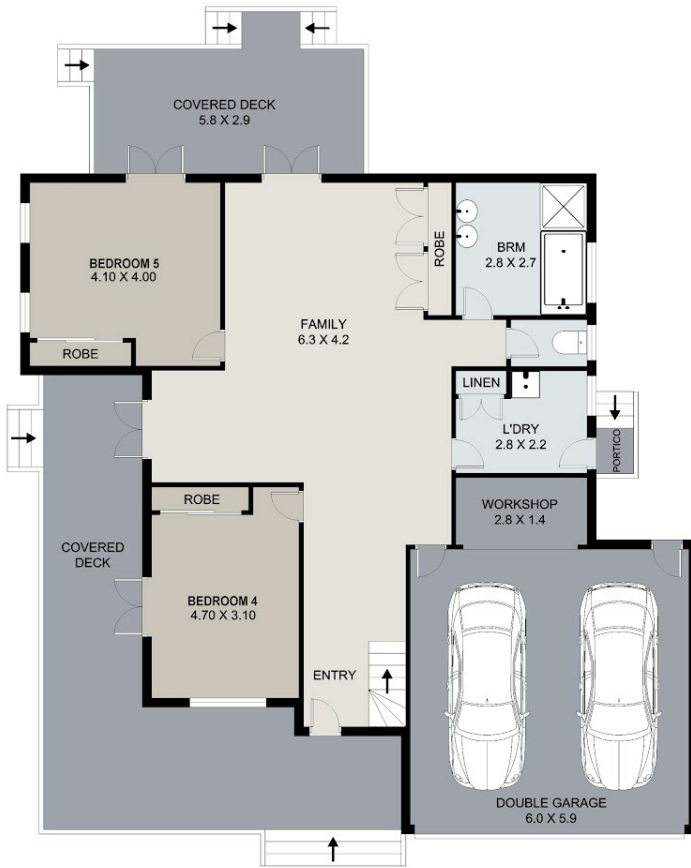


Andrew Botwright
0402784250
andrewbotwright@atrealty.com.au
www.atrealty.com.au

GROUND FLOOR



Approximate internal surface area 233 SQM
 Approximate external surface area = 109 SQM
 Approximate total surface area = 342 SQM



UPPER FLOOR



Disclaimer: Please note this floor plan is for marketing purposes and is to be used as a guide only. All dimensions are estimates only and may not be exact measurements.