



**SOLD**

## SOLD BY ROBYN HUNT

Timeless charm and irreplaceable character abound in this gorgeous weatherboard home you could be proud to call your own. Set in a highly desirable area and freshly painted inside and out properties of this quality are a genuine asset.

From the moment you enter the wide and welcoming hallway you know you've found something special. Enveloped in light with rich timber floors and heightened ceilings the timeless style on offer is highlighted by beautiful art deco accents and delightful decorative corning that catch your eye throughout.

Showcasing an easy flowing layout this three bedroom home enjoys an expansive living space with air-conditioning and a sweet, retro kitchen with gas cooktop which leads through the sunroom/office/study and out to the new entertaining deck.

This home is a delight to inspect and features a great backyard for kids to play and the green thumb to enjoy a veggie garden before or after taking in the scenic views from the deck. There's also plenty of room under the house for the tools, car accommodation and a separate laundry.

With little passing traffic and a peaceful streetscape you will be impressed with just how central and handy this home really is.

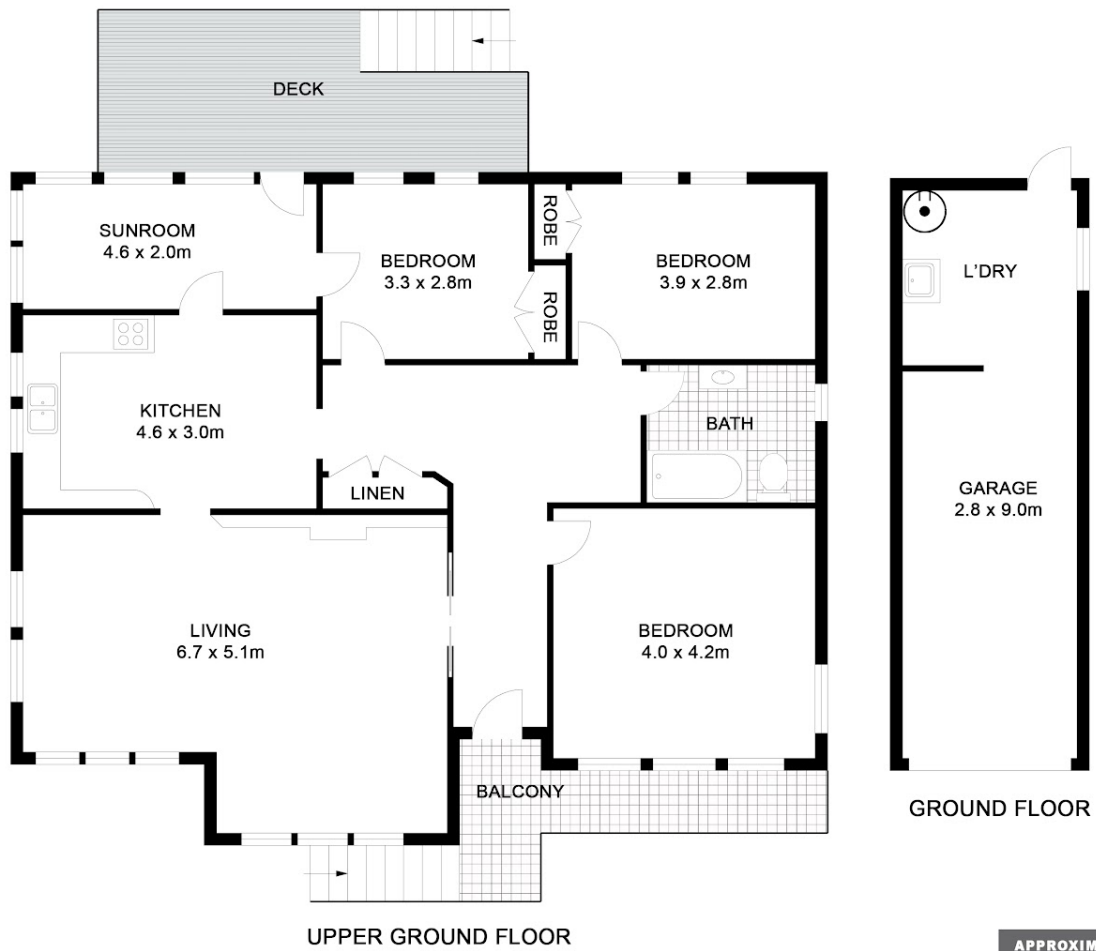
**3 BED | 1 BATH | 1 CAR**

**PRICE:**  
\$725,600

**OPEN FOR INSPECTION:**  
N/A



**Robyn Hunt**  
**0448448758**  
robyn@atrealty.com.au  
[www.atrealty.com.au](http://www.atrealty.com.au)



UPPER GROUND FLOOR

GROUND FLOOR

4 Gorton Ave, East Lismore

Floor Plan Disclaimer: Bee Hive Studios floor plans / site plans are intended as an approximate guide only. No representations or warranties of any nature are given or intended and any person using this information other than as a guide should always rely on their own enquiries. Bee Hive Studios property marketing services / Photography, Floor plans, Video, Aerial photography / https://beehivestudios.com.au



**Robyn Hunt**  
Real Estate



APPROXIMATE AREAS	
INTERNAL FLOOR SPACE	- 138m <sup>2</sup>
EXTERNAL FLOOR SPACE	- 23m <sup>2</sup>
CARPORT	- 25m <sup>2</sup>

Disclaimer: Please note this floor plan is for marketing purposes and is to be used as a guide only. All dimensions are estimates only and may not be exact measurements.

**Robyn Hunt**  
0448448758  
robyn@atrealty.com.au  
[www.atrealty.com.au](http://www.atrealty.com.au)

