



**SOLD**

## A HOME AMONGST THE GUM TREES

Nestled in leafy Koala Beach, this 3 bedroom home is located in an eco-friendly Estate which prohibits cats and dogs, allowing for natural fauna to thrive. Enjoy the best of the Tweed Coast with a tree change and sea change with Pottsville beach only a short stroll away. Backing onto a nature reserve guarantees privacy and a relaxed bush view.

Features Include:

- Master bedroom/parents retreat with expansive views positioned on upper level of property - complete with ensuite, air conditioning and walk-in-robe
- 2 good sized bedrooms with built in robes, and ceiling fans
- Functional kitchen complete with gas cooktop, under bench oven and dishwasher
- Spacious outside deck wraps around property with sunroom and entertaining area – leading out to nature reserve
- Separate dining and lounge areas with air conditioning
- Single lock up garage
- currently Tenanted with a 90 day period after exchange needed for vacant possession

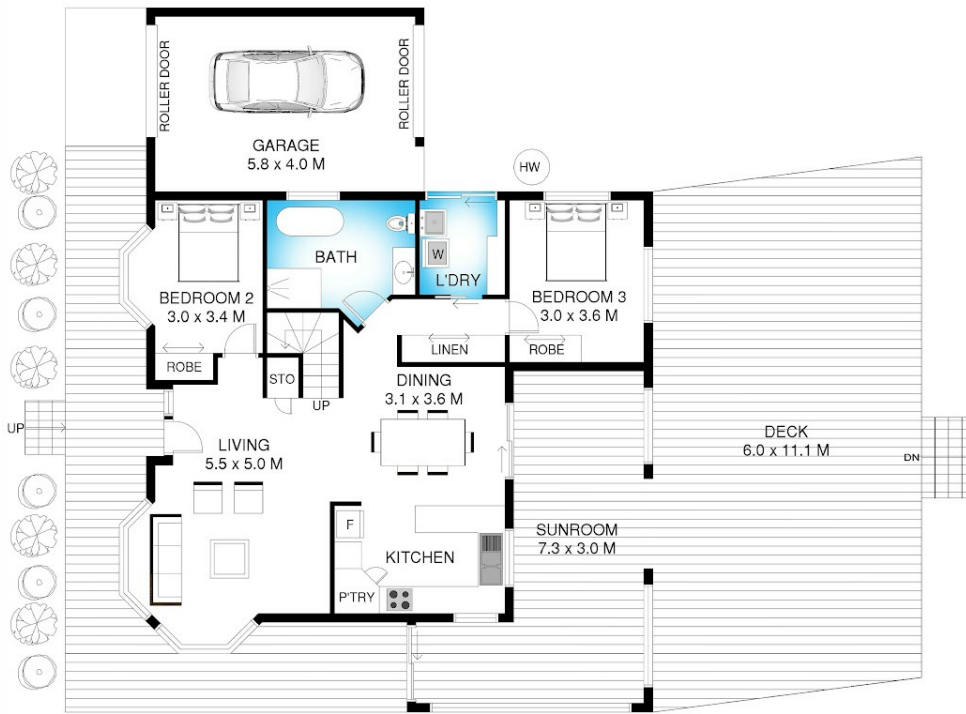
**3 BED | 2 BATH | 1 CAR**

**PRICE:**  
**\$1,085,000**

**OPEN FOR INSPECTION:**  
**N/A**



**Mark Howlett**  
**0427925863**  
mark.howlett@atrealty.com.au  
[www.atrealty.com.au](http://www.atrealty.com.au)



LOWER LEVEL



UPPER LEVEL



Scale in metres. Indicative only. Dimensions are approximate. All information contained herein is gathered from sources we believe to be reliable. However we cannot guarantee its accuracy and interested persons should rely on their own enquiries.

INTERNAL : 150 SQ.M.  
 PATIO : 135 SQ.M.



31 Sassafra Street, Pottsville



Disclaimer: Please note this floor plan is for marketing purposes and is to be used as a guide only. All dimensions are estimates only and may not be exact measurements.

Mark Howlett  
 0427925863  
 mark.howlett@atrealty.com.au  
 www.atrealty.com.au

