

13 WISTERIA CLOSE, COFFS HARBOUR, NSW, 2450



SOLD

SOLD BY CHERYL DONALDSON 0466 037 468

This level four bedroom home is low maintenance and ideal for busy families or travelling nomads with plenty of room for the caravan or boat. Offering a versatile Open-Plan with two spacious living areas overlooking a wonderful outdoor vista of green space and nature with amazing birdlife. The kitchen is the central hub of the home with a large breakfast bar, quality cabinetry and granite Bench-tops. Relax or entertain in the all-weather alfresco area or enjoy a chilled drink with friends in a very private setting. The home features double lock-up garage, garden sheds, beautiful established and manicured gardens and much more. Located in one of Coffs Harbour's best areas, this beautifully maintained home could be the family home you've been waiting for!! Just a short stroll to Shop 36 and on a few minutes to Coffs Harbour CBD and 5 minutes to the beach. Call Cheryl Donaldson today on 0466 037 468.

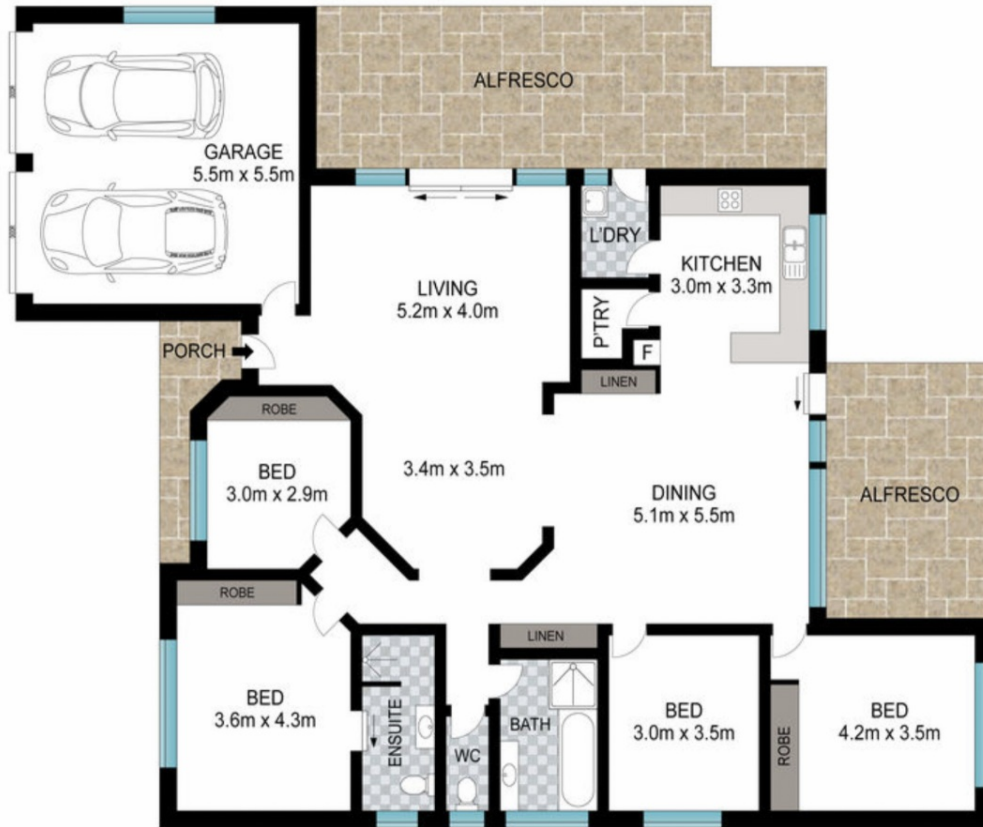
4 BED | 2 BATH | 2 CAR

PRICE:
\$850,000

OPEN FOR INSPECTION:
N/A



Cheryl Donaldson
0466037468
cheryl@atrealty.com.au
www.atrealty.com.au



INT: 185 m²
EXT: 50 m²



Scale in metres. Indicative only. Dimensions are approximate. All information contained herein is gathered from sources we believe to be reliable. However, we cannot guarantee its accuracy and interested persons should rely on their own enquiries.

13 Wisteria Close, Coffs Harbour



Disclaimer: Please note this floor plan is for marketing purposes and is to be used as a guide only. All dimensions are estimates only and may not be exact measurements.

Cheryl Donaldson
0466037468
cheryl@atrealty.com.au
www.atrealty.com.au

