



**SOLD**

## PRIVACY AND CONVENIENCE - UPDATED 60S CLASSIC ONLY 7 MINS TO THE HOBART CBD

Perfect family home with river views – peaceful, private and secluded.

Situated in close proximity to all Lindisfarne has to offer - Shops, cafes, parks, schools, public transport, walking trails and the waterfront, this 3 bedroom 2 bathroom home has views across the River Derwent to Mt Wellington, Tasman Bridge and the city.....an ever changing vista by day or night.

Offering a renovated kitchen, modern bathrooms, master bedroom with walk in robe, second and third bedrooms with built in robes, large terraced private backyard, separate dining room and large deck making the most of the views. Recently repainted internally and externally, maintenance is minimal!

This lovely family home is fully fenced and with yards offering peace of mind for young children or pets.

A covered patio at the rear of the home offers plentiful sun and makes a wonderful workshop and outdoor dining area, storage area or potential 2nd off street park.

The upper level of the home features views from the lounge, dining, outside deck and Master Bedroom and includes the family bathroom and access to the front and side of the home. The lower level houses the 2nd and 3rd bedrooms with bathroom, laundry and plentiful under-home storage.

The home features a woodheater and Daikin reverse cycle heatpump for year round comfort and easy living.

Located near the end of a cul-de-sac ensuring year round peace and quiet with only a short 7 minute drive to Hobart CBD.

\*\*\*At our vendors request, this Saturdays Open Home from 12.00 to 12.45 will be our first available showing \*\*\*

Please contact Ben Palmer for more information

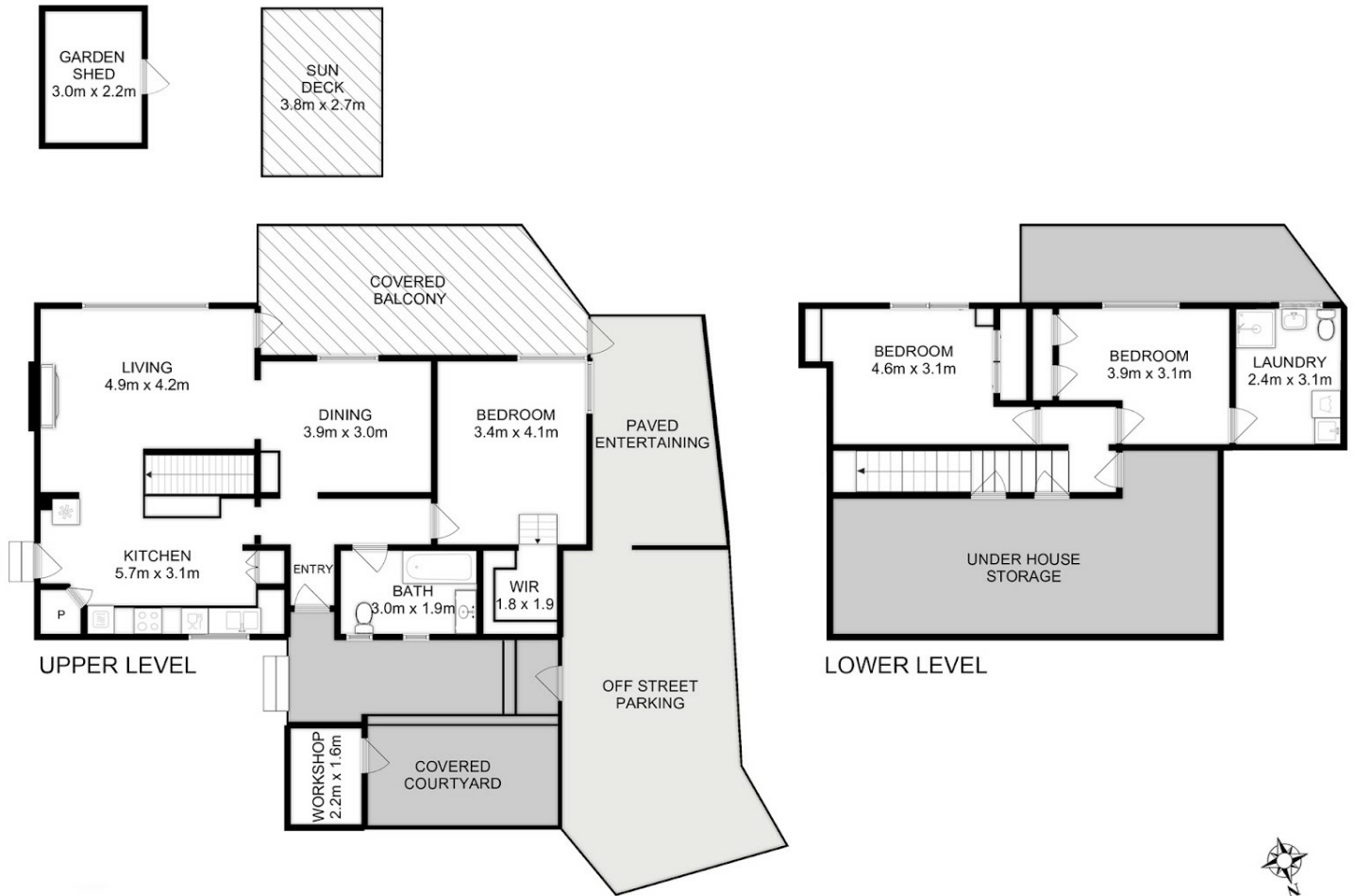
**3 BED | 2 BATH | 1 CAR**

**PRICE:**  
\$770,000

**OPEN FOR INSPECTION:**  
N/A



**Ben Palmer**  
**0417556731**  
benpalmer@atrealty.com.au  
[hobarthomes.com.au](http://hobarthomes.com.au)



Total Approx. Floor Area : 138 sqm  
 Total Approx. Outbuilding Area : 6.6 sqm

All measurements are internal and approximate.  
 This plan is a sketch for illustration, not valuation.  
 Produced by Open2view.com



Disclaimer: Please note this floor plan is for marketing purposes and is to be used as a guide only. All dimensions are estimates only and may not be exact measurements.