



SOLD

'THE CREST'

Unique Ground Floor Apartment at Clayfield's most prestigious address. Spacious 300m2 of single level living with private access to the pool and surrounds.

This is low maintenance living at its best with multiple living areas and both north and south facing balconies.

Features

- Single level living with secured outdoor living areas
- 3 large bedrooms plus a family room/study
- King sized master with ensuite and built-ins
- Modern granite kitchen has direct access to north facing courtyard
- Second bathroom and laundry
- Side by side double car park
- Swimming pool and meeting or entertaining facilities
- Short 50 metre stroll to bus and 10 minute walk to rail
- Ducted air conditioning
- Security building with intercom
- Storage Shed
- Recently refurbished

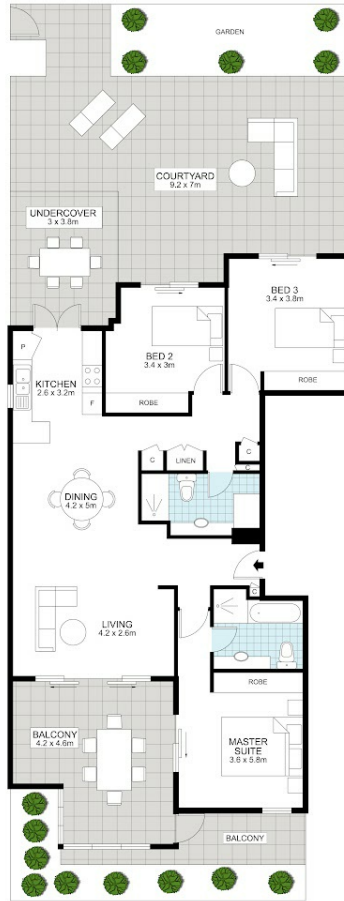
3 BED | 1 BATH | 2 CAR

PRICE:
\$702,000

OPEN FOR INSPECTION:
N/A



Anjanette Parker
0411526490
trent.parkermail@gmail.com
www.atrealty.com.au



**1/106 Bonney Avenue,
Clayfield**



FLOOR AREA SIZES

Internal 122m² | Garage 32m² | External 58m² | Total 212m²

Floor plan measurements are approximate and for illustration purposes only.
Scale in metres.

Created by Rolley Photo Media.

Disclaimer: Please note this floor plan is for marketing purposes and is to be used as a guide only. All dimensions are estimates only and may not be exact measurements.