



SOLD

FULLY FENCED USABLE 4710M2 BLOCK, WITH TUDOR STYLE HOME AND 15X9M INSULATED SHED.

Old world character with modern day functionality is the best way to describe this Tudor style home, which is perched neatly amid a fully fenced, usable 4710m2 block.

There is so much character from the large brick chimney which houses a modern-day fireplace, timber spiral staircase, exposed beams, and the A frame timber ceilings upstairs. The mix of exposed red brick, timber ceilings and flooring throughout blend nicely with the more contemporary style kitchen and bathroom.

Triple glass sliding doors open out onto the entertaining deck where you can take in life in the privacy of your own yard and enjoy watching the kids explore the many different pockets and multitude of fruit trees throughout the property.

The 15x9m extra high insulated shed with 3 phase power and a 6m rack for timber with its own separate entrance from the road is perfect for the home handyman, home-based business or plenty of storage.

This property has so much to offer and is a must see.

INTERNAL

Downstairs

- Double brick on the outside forming natural insulation
- Kitchen/dining area
- 5 burner gas cooktop
- Stainless steel oven
- Dishwasher
- Separate living with fireplace
- 1 bedroom with air con
- 1 bathroom

3 BED | 1 BATH | 2 CAR

PRICE:
\$906,000

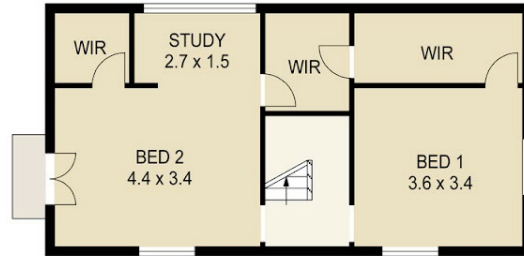
OPEN FOR INSPECTION:
N/A



Karin Smith
0403012639
karin.smith@atrealty.com.au
www.atrealty.com.au

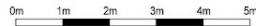


Upper Level



Lower Level

39 SIGANTO STREET,
TAMBORINE MOUNTAIN



SCALE UNIT IS IN METRES

All measurements are approximate and for illustration purposes only.
It should not be considered 100% accurate. Interested parties should
rely on their own enquiries.



Disclaimer: Please note this floor plan is for marketing purposes and is to be used as a guide only. All dimensions are estimates only and may not be exact measurements.