

14 DOUGLAS PARK DRIVE, WILTON, NSW, 2571



SOLD

THE SEMI RURAL LIFESTYLE YOU HAVE ALWAYS DREAMED OF!

Features Include:

- Gorgeous wrap around timber porch overlooking the expansive yard
- Semi enclosed front yard
- Boasting 5 generously proportioned bedrooms with built in robes
- The master suite includes an ensuite with a bathtub, dual basins & a frameless shower & access to the porch
- Spacious open plan living room
- Sitting area includes a cozy combustion fireplace
- Meals area includes built in shelving & cabinetry
- Well appointed kitchen with ample cupboard & bench space
- Classic oven with gas cooking
- Island bench with breakfast bar
- Bright & airy main bathroom includes a bathtub
- Separate toilet
- Internal laundry includes built in linen closet & backyard access
- Ducted air conditioning
- Ceiling fans throughout
- Alarm
- Multiple entertaining spots along the porch
- Built in Jacuzzi on the porch
- Huge yard with ample space
- Large workshop is equipped with an office, storage, a mezzanine level & two car carport
- Separate studio with built in cabinetry & a porch, perfect for those who are hobby enthusiasts
- Four car carport with drive through access to workshop
- 1954sqm block surrounded by a peaceful atmosphere & lush green reserves

This ideal home is located away from the hustle and bustle of city life but still within close proximity should you wish to venture out. Local schools, shops & parks are all close by and access to the Hume Motorway is only a short drive away. You are a convenient 25 minute drive from the beautiful beaches of Wollongong & in the opposite direction, a 25 minute drive where you are spoilt for choice for popular shopping destinations as both Macarthur Square & Narellan Town Centre are favourites with the locals. If venturing out on a weekend is something you love

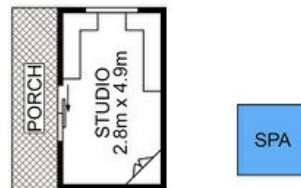
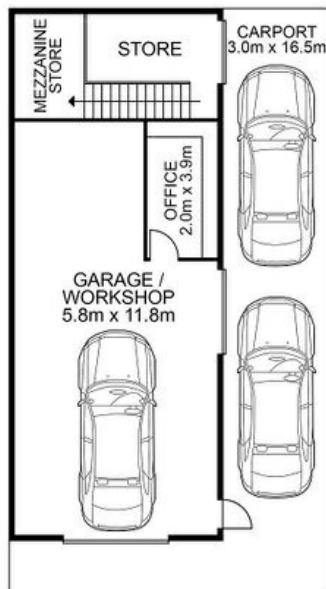
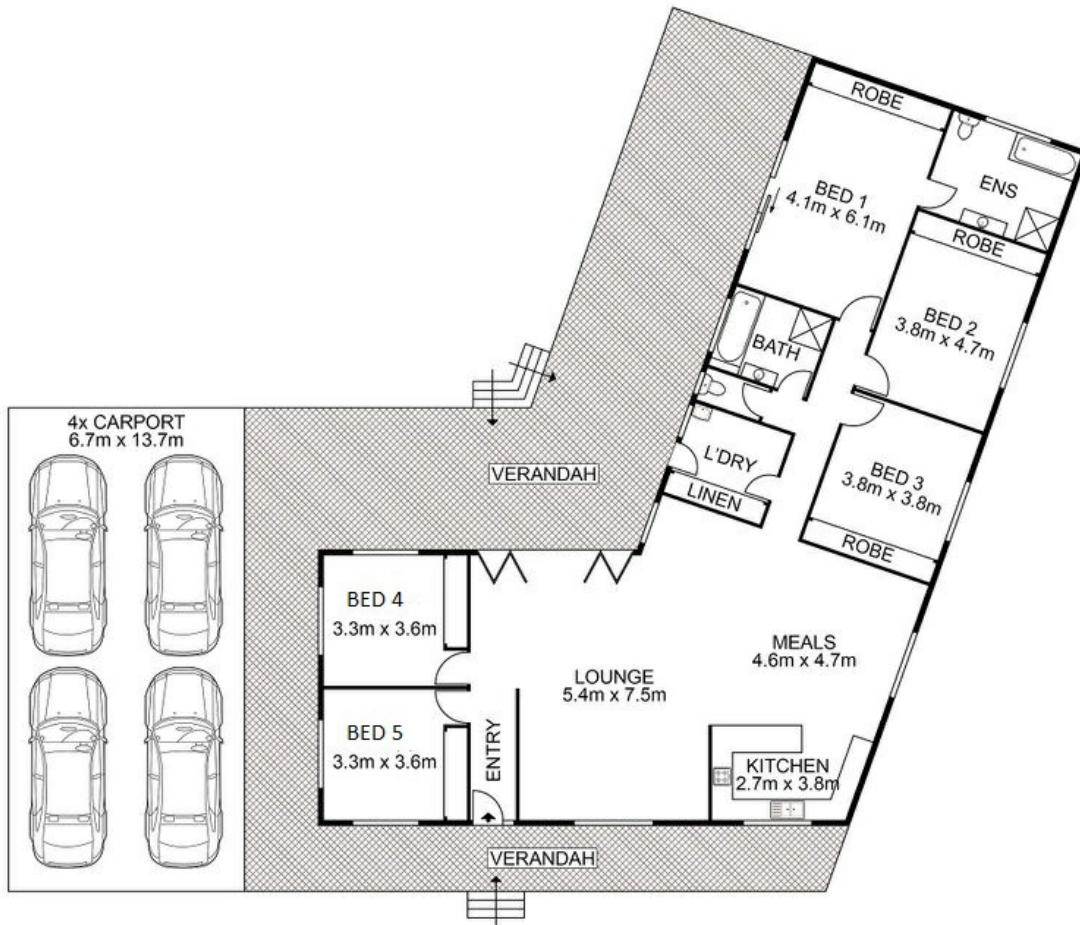
5 BED | 2 BATH | 7 CAR

PRICE:
\$1,350,000

OPEN FOR INSPECTION:
N/A



Huss Al Salemi
0411699419
huss@atrealty.com.au
www.agencycentral.com.au



 AGENCY

Disclaimer: Please note this floor plan is for marketing purposes and is to be used as a guide only. All dimensions are estimates only and may not be exact measurements.

14 Douglas Park Drive, Wilton

Huss Al-Salemi • All measurements are approximate • Drawn for marketing purposes only

0411699419

huss@atrealty.com.au

www.agencycentral.com.au

