



SOLD

"WOW WHAT AN OPPORTUNITY"

Situated on a whopping 975m² block in a quiet subdivision less than a kilometre to the waterfront is this large family home in the bayside suburb of Cleveland.

Beyond the lead light entrance and up the stairs, the spacious open plan Kitchen, Dining & Living spaces greet you with the warmth of natural light on timber floorboards flowing through to the massive north facing lounge. The Kitchen is equipped with lots of storage space, laminate benchtops, a dishwasher and water filtration system for purified drinking water on tap.

There are 3 large bedrooms, 2 with built in robes that flow out to the verandah plus a sizable third.

The bathroom is well appointed with shower over the bath plus vanity and storage.

With large verandas on both side of this home, there is always an opportunity to bask in the sunshine or relax in a shady spot and enjoy the bayside breeze. There's an internal laundry looking over the water tank and greenhouse for those with a green thumb.

Downstairs you'll find a large tiled rumpus room and additional toilet and shower plus the double lock up garage. There's also paved parking for a third vehicle at the rear.

Opportunities to purchase a home like this do not come up that often so call Errol now to arrange a private inspection or visit one of our open home times before it's too late.

3 BED | 2 BATH | 2 CAR

PRICE:
\$790,000

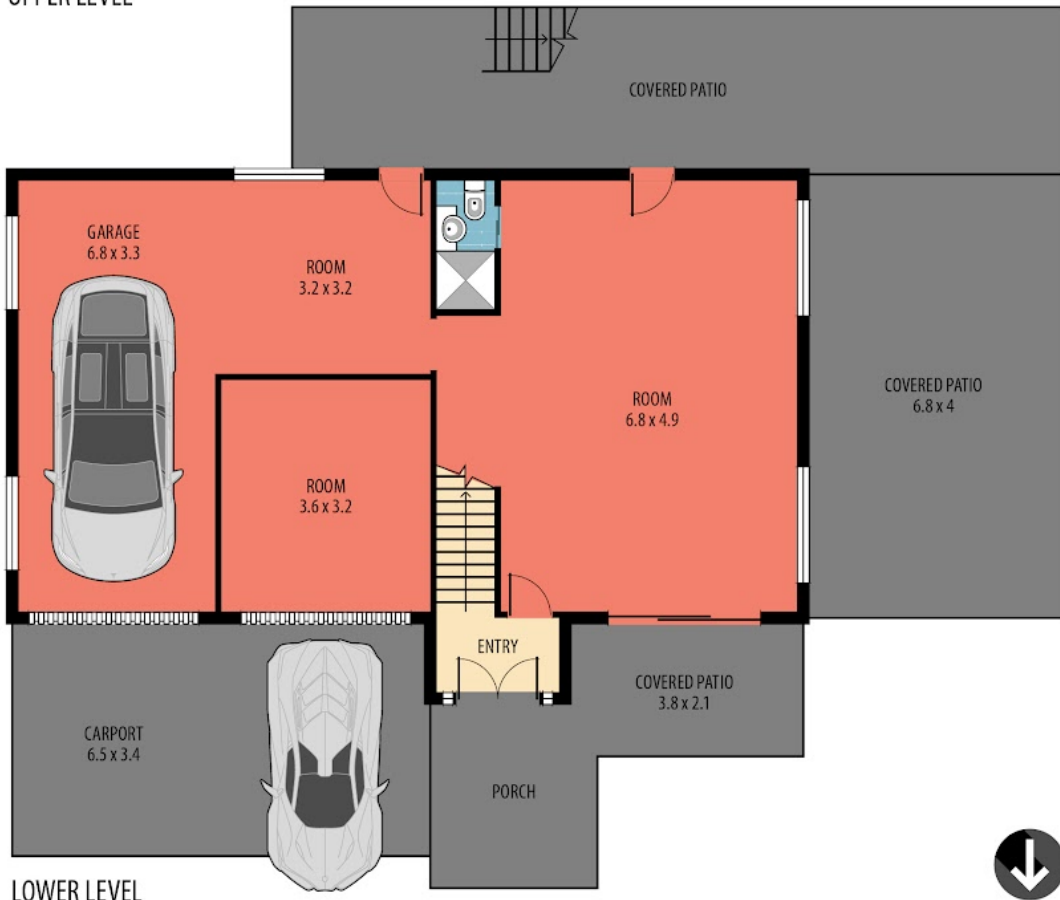
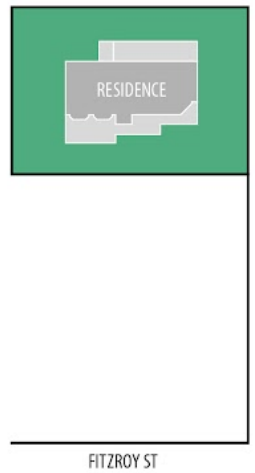
OPEN FOR INSPECTION:
N/A



Errol Reibelt
0415812557
errol.reibelt@atrealty.com.au
www.atrealty.com.au



SITE PLAN
(not to scale)



Total area: 376m² (approx.)
 Internal area: 188m² (approx.)
 Outdoor area: 142m² (approx.)
 Garage: 46m² (approx.)



Disclaimer: Please note this floor plan is for marketing purposes and is to be used as a guide only. All dimensions are estimates only and may not be exact measurements.

DISCLAIMER: ALL DIMENSIONS ARE AN APPROXIMATION ONLY AND NO GUARANTEE IS GIVEN WITH RESPECT TO ACCURACY.

Errol Reibelt
 0415812557
 errol.reibelt@atrealty.com.au
 www.atrealty.com.au

