



FOR SALE

GET READY TO MOVE IN!

A family is required for this well maintained, lovely brick/tile home located in a quiet Nambucca Heads cul-de-sac.

Generous living spaces, three good size bedrooms with built in robes, fenced back yard and close to schools, shops and beaches.

The light and airy kitchen has been renovated with quality gas cooking appliances, dishwasher and loads of cupboards. Separate dining area and large lounge room. There is only one bathroom to clean and it has had a modern makeover as well.

Easy to maintain floating timber floors in the living areas and reverse cycle air-conditioning for year round comfort.

Single lock up garage and side access to the back yard for a boat or trailer plus extra storage under the house. Established fruit trees in fenced rear yard.

All this on a level block in town... Yes, it sounds great because it is great! – Call Narelle or Craig today to make your inspection time.

We make no representation or warranty as the accuracy, reliability or completeness of the information relating to the property. Some information has been obtained from third parties and has not been independently verified. Accordingly, no warranty, representation or undertaking, whether express or implied, is made and no responsibility is accepted by us as to the accuracy of any part of this, or any further information supplied by or on behalf our behalf, whether orally or in writing.

NOTE: we are a local Nambucca Valley Real Estate that has its Head Office in Sydney.

3 BED | 1 BATH | 1 CAR

PRICE:

\$520,000 - \$550,000

OPEN FOR INSPECTION:

N/A

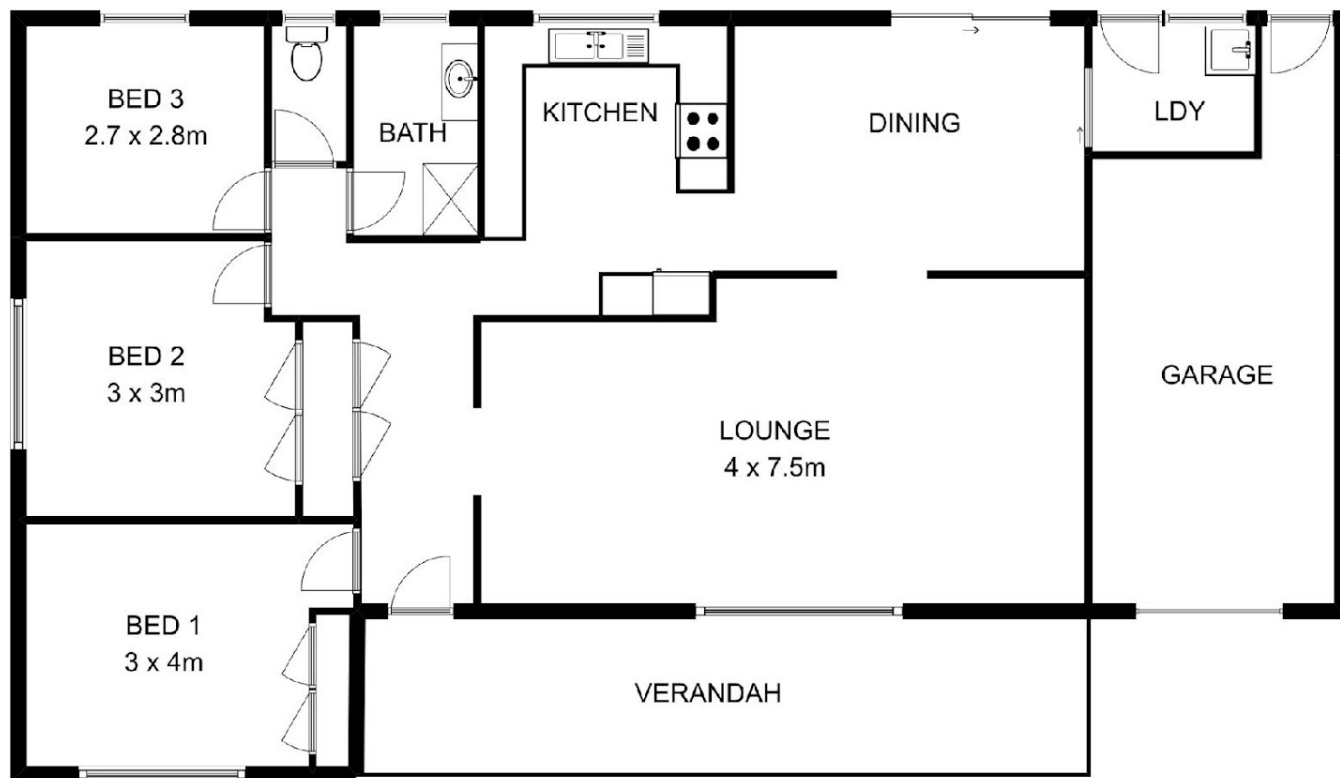


Narelle Harper

0435054625

narelleharper@atrealty.com.au

www.atrealty.com.au



INT: 130 sqm
EXT: 18 sqm
TOTAL: 148 sqm

4 WATTLE CLOSE, NAMBUCCA HEADS

This floor plan is not to scale. Areas and dimensions are approximate and therefore plan should only be used for illustrative purposes.

Disclaimer: Please note this floor plan is for marketing purposes and is to be used as a guide only. All dimensions are estimates only and may not be exact measurements.