



SOLD

BOOK PRIVATE INSPECTION TODAY

Impressively designed with spacious proportions and a contemporary feel, this incredible double storey residence has been renovated with the utmost attention to detail.

Upon entry, be greeted by a sunken lounge room and generous office/study zone which seamlessly links to a designer open plan kitchen and meals area of enormous dimensions. With 2 pac soft-closing cabinetry and new De Longhi appliances, it provides the perfect centrepiece for a family focused floor plan.

An additional lounge / rumpus room with bar, pool table, polished concrete floors and exposed brick provides a spacious setting with a modernised 'industrial-like' edge, perfect for entertaining guests and leaving a remarkable impression.

The nearby staircase ascends to a bright retreat, ideal for yet another lounge or study zone, and leads to two spacious bedrooms plus a modern powder room. The downstairs master bedroom has a generous ensuite and walk-in-robe. The second bedroom, main bathroom and large laundry room are also nearby situated. Waiting outside is a large pergola / carport, providing plenty of undercover space for a multitude of vehicles and enjoying a BBQ with friends and family.

A double garage and workspace provides the essentials, whilst upstairs is a modern 'Fonzie flat' for guests or residents to enjoy a secluded space away from the primary residence. Bright, spacious and with its own balcony, this air bnb / studio style setup offers the opportunity to utilise the space for an array of different purposes and for you to choose that which you find most compelling. Some of many additional features includes solar panels with a 5kw inverter and solar battery, ducted heating and evaporative cooling.

Situated on a quiet street within the highly regarded Bellbridge Estate, a multitude of schools, shops and parklands are within easy grasp as well as easy freeway access.

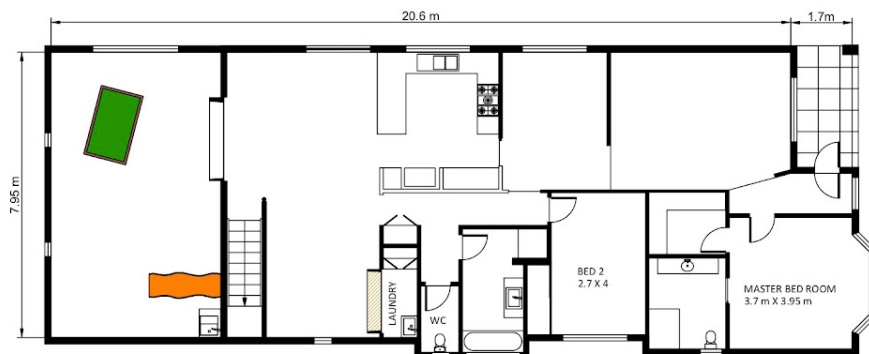
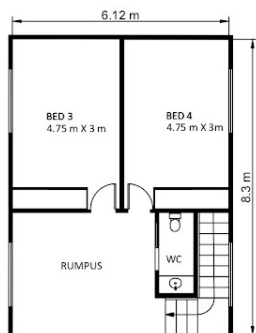
4 BED | 2 BATH | 2 CAR

PRICE:
\$800,000

OPEN FOR INSPECTION:
N/A



Samuel Hogan
0401315234
samuel@atrealty.com.au
www.atrealty.com.au



Whilst every attempt has been made to ensure the accuracy of the floor plan contained here, measurements of doors, windows, rooms and any other items are approximate and no responsibility is taken for any error, omission, or mis-statement. This plan is for illustrative purposes only and should be used as such by any prospective purchaser. The services, systems and appliances shown have not been tested and no guarantee as to their operability or efficiency can be given.

Disclaimer: Please note this floor plan is for marketing purposes and is to be used as a guide only. All dimensions are estimates only and may not be exact measurements.