



## FOR LEASE

### LEAFY OUTLOOK AND CLOSE TO BRISBANE RIVER

This immaculate and well presented unit is in a small block of 6.

First floor and an end unit this modern and trendy unit boasts two large balconies to capture the breezes and are perfect for relaxing and entertaining.

Freshly painted with gorgeous timber style flooring, updated kitchen and combined bathroom and laundry make this move in ready.

There is a undercover car space and also street parking is available.

Exclusive river front neighbourhood surrounded by prestigious and magnificent homes enjoy an active lifestyle with nearby parks and river walkway and also train transport and charming villages like Graceville with cute cafes and boutiques. Indooroopilly Shopping Centre and the city are easily accessible.

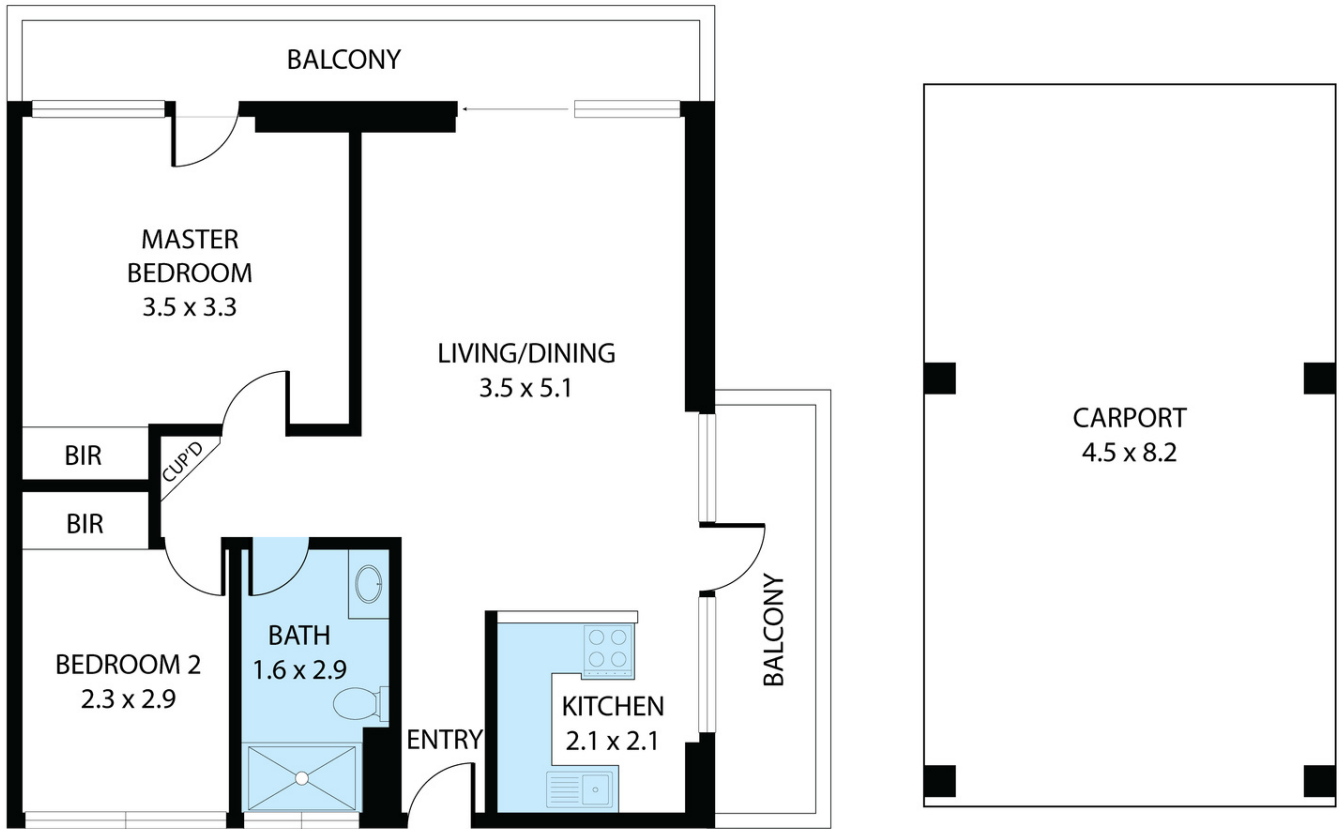
2 BED | 1 BATH | 1 CAR

PRICE:  
\$550 per week

OPEN FOR INSPECTION:  
N/A



**Sandra Sherratt**  
0411298493  
sandrasherratt@atrealty.com.au  
[www.atrealty.com.au](http://www.atrealty.com.au)



4/7 Longman Terrace, Chelmer 4068

Whilst every attempt has been made to ensure the accuracy of the floor plan contained here, measurements of doors, windows, rooms and any other items are approximate and no responsibility is taken for any error, omission, or misstatement. This plan is for illustrative purposes only and should be used as such by any prospective purchaser.

Disclaimer: Please note this floor plan is for marketing purposes and is to be used as a guide only. All dimensions are estimates only and may not be exact measurements.