



SOLD

CONTEMPORARY, STYLISH AND CONVENIENT

Stylish, secure and situated within a short walk to Croydon shops, train station, restaurants and cafes, this quality built apartment provides superior stress-free living with unbeatable lifestyle benefits.

A standout from the start, it is defined by its spacious floor plan and private undercover balcony. Ready to move into, the apartment presents in pristine condition; showcasing a light and bright open plan living and dining room adjacent to great size kitchen with brand new appliances, stone benchtops and large pantry.

Great sized carpeted-robbed bedrooms, master with walk in robe, sparkling ensuite effect bathroom and separate W.C.

This top floor corner apartment of this boutique development with suspended concrete slab floor and solid concrete party wall system has many extra's including reverse cycle heating/ cooling in all rooms, hardwood timber floorboards, undercover secure car park on title, separate private laundry/ storage room and more all situated in a quiet tree-lined street.

CALL BILL NOW TO ARRANGE A PRIVATE INSPECTION AT YOUR CONVENIENCE.
0419514276.

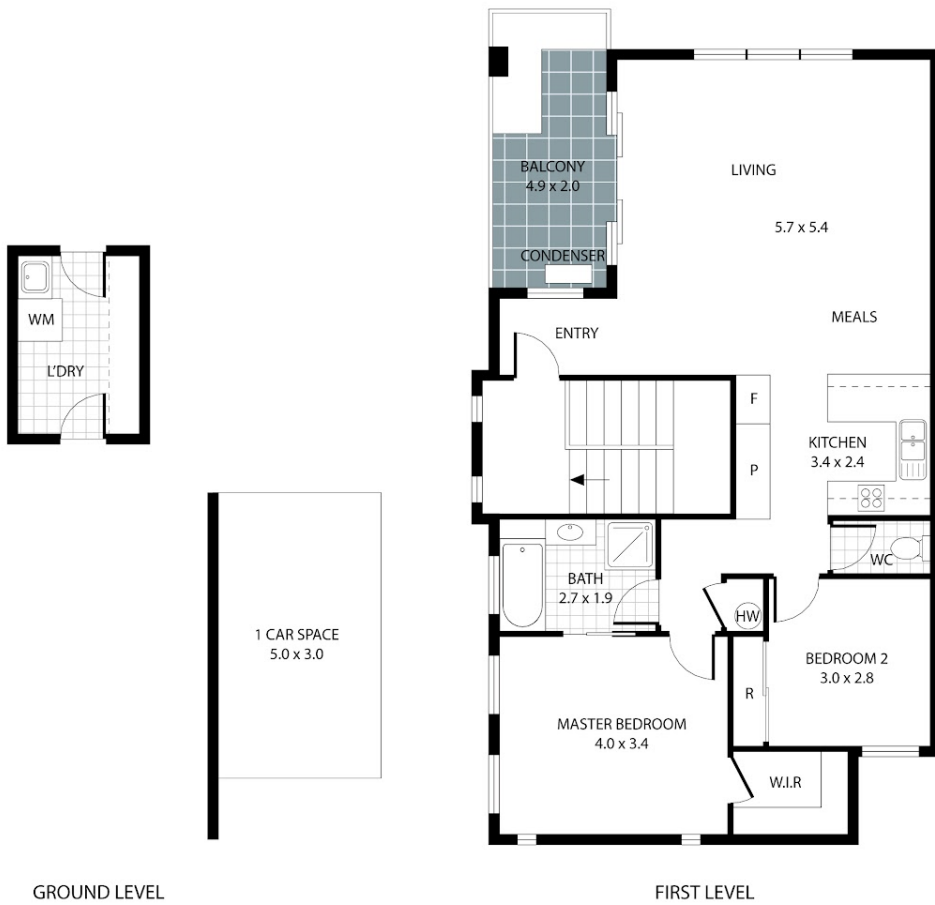
2 BED | 1 BATH | 1 CAR

PRICE:
\$516,500

OPEN FOR INSPECTION:
N/A



Bill Katsoulis
0419514276
billkatsoulis@atrealty.com.au
www.atrealty.com.au



THIS FLOOR PLAN IS NOT TO SCALE. MEASUREMENTS ARE INDICATIVE AND IN METRES. VEGETATION IS PLACED FOR ILLUSTRATIVE PURPOSES ONLY.
THIS PLAN SHOULD NOT BE RELIED UPON. INTERESTED PARTIES SHOULD MAKE THEIR OWN ENQUIRIES.

Disclaimer: Please note this floor plan is for marketing purposes and is to be used as a guide only. All dimensions are estimates only and may not be exact measurements.