



SOLD

SOLD BY ROBYN HUNT

With beautiful north facing views to the mountain ranges of Nightcap National Park this three bedroom home presents an excellent opportunity to get into the property market.

Sitting on a 563m² block the home combines timber floors and modern vinyl planking leading out to a delightful all-weather entertaining deck. A perfect location to enjoy your favourite beverage while watching the changing colours of the sky and taking in the beauty of the distant mountain ranges.

Of hardwood construction this home is built to last and offers the lucky buyers a spacious master bedroom with polished timber flooring and mountain views, good size second bedroom with air-conditioner, an updated bathroom with separate toilet, and a kitchen with dishwasher and views.

Storage on the ground level is a bonus feature with concreted flooring and workshop space perfect for all the tools and toys. With a bit of creativity and imagination the separate laundry shed could potentially be reconfigured to be utilised for a multitude of uses.

Currently vacant it is ideally positioned for convenience, ease of access to major amenities and is only a short drive to the thriving Lismore CBD.

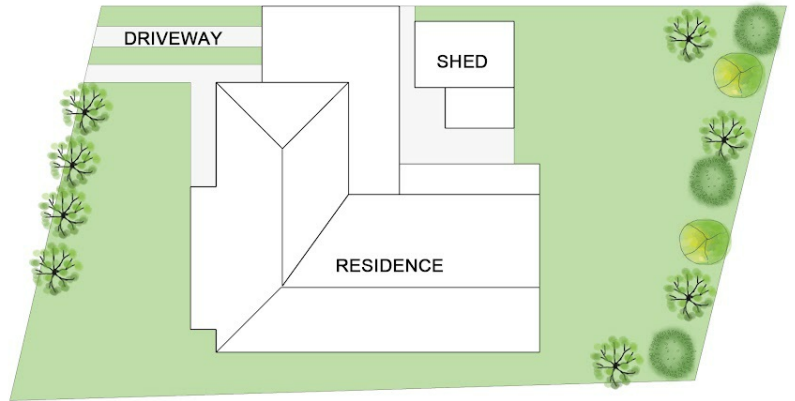
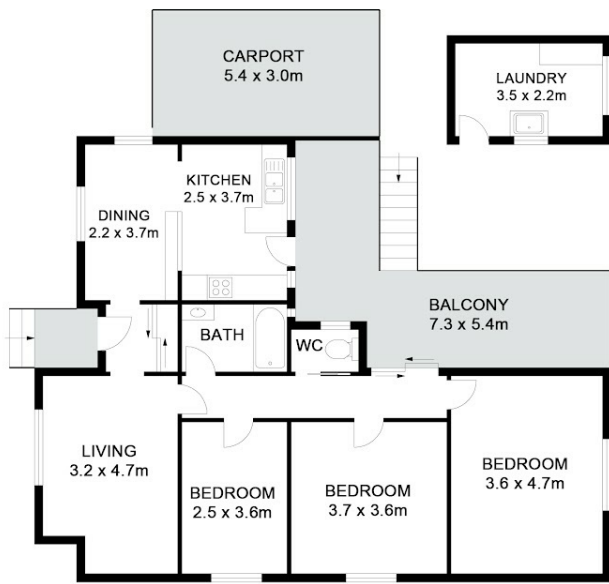
3 BED | 1 BATH | 1 CAR

PRICE:
\$485,000

OPEN FOR INSPECTION:
N/A



Robyn Hunt
0448448758
robyn@atrealty.com.au
www.atrealty.com.au



SITE PLAN
(NOT TO SCALE)

462 BALLINA ROAD

GOONELABAH

Floor Plan Disclaimer: Bee Hive Studios floor plans / site plans are intended as an approximate guide only. No representations or warranties of any nature are given or intended and any person using this information other than as a guide should always rely on their own enquiries. Bee Hive Studios property marketing services / Photography, Floor plans, Video, Aerial photography / https://beehivestudios.com.au



3



1



1

Robyn Hunt @realty

APPROXIMATE AREAS

INTERNAL FLOOR SPACE - 97m²

EXTERNAL FLOOR SPACE - 23m²

CARPORT - 16m²

Disclaimer: Please note this floor plan is for marketing purposes and is to be used as a guide only. All dimensions are estimates only and may not be exact measurements.

Robyn Hunt
0448448758
robyn@atrealty.com.au
www.atrealty.com.au

