



Sold

EASY-CARE TERRACE HOME AMOUNTS TO A SAVVY INVESTMENT

3 BED | 2 BATH | 1 CAR

35 Baringa Drive, Baringa, QLD, 4551

Occupying a prime position overlooking vast playing fields, this duallevel, contemporary terrace home will appeal to families, working professionals or investors looking for convenience and lifestyle. Completely freestanding, it enjoys unique and private low maintenance living.

A generous outdoor entertaining space flows from the air-conditioned, open plan living/dining area. This generous zone delivers a perfect space where family and friends can enjoy alfresco dining, barbecues or some relaxing downtime. The central living hub also opens out to the front landscaped garden, with a north-westerly aspect, providing a perfect flow of air throughout, cutting down on the use of airconditioning.

The ultra-stylish kitchen features stone benchtops, island breakfast bar, and Euro-Maid appliances of electric cooktop, oven, rangehood and dishwasher, plus a walk-in pantry. It is sure to satisfy the most discerning of tastes. Meanwhile, a downstairs laundry and powder room provides that added convenience.

Upstairs, a restful master bedroom embodies casual comfort and features a built-in robe, chic ensuite as well as a private balcony – the perfect venue for a nightcap before settling in for the evening. Another two double bedrooms also feature built-in robes and ceiling fans.

The property is fully fenced and has two street frontages with access to the lock-up garage from Frost Lane. Additional features comprise tiles in the living areas and a reverse cycle airconditioning unit; security screens and key lock windows and doors throughout, plus indoor/outdoor ceiling fans and a 3,000-litre water tank.

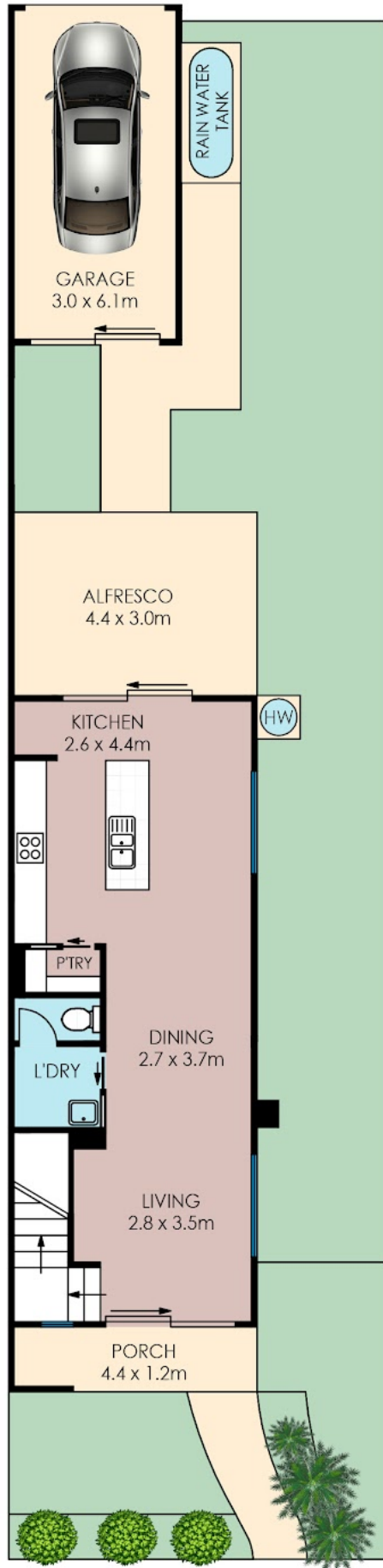
Beautifully maintained and in pristine condition the property is currently tenanted for \$460 per week with a fixed lease until April 11th 2022 making this an

PRICE:
\$565,000

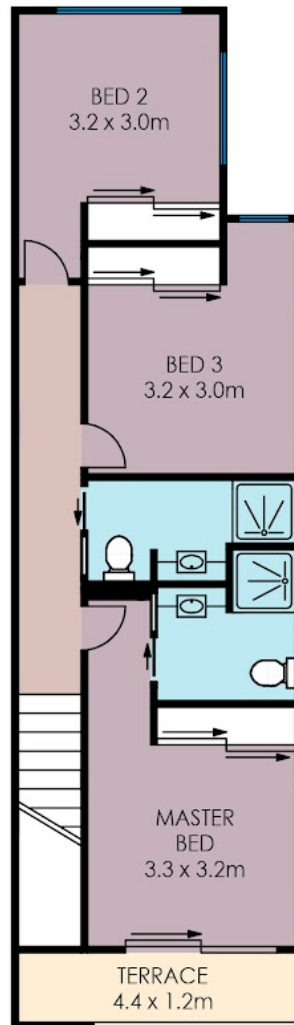
OPEN FOR INSPECTION:
N/A



Greg Pratt
0413 624 308
greg@coastaledgerealestate.com.au



LOWER LEVEL



UPPER LEVEL

