




Sold

1/12 OFFICER COURT, WERRIBEE, VIC, 3030

3  | 2  | 2 

LUX
REAL ESTATE 



MODERN FAMILY HOME INSPECT SATURDAY BY APPOINTMENT ONLY!!!!

PRICE: \$547,000

OPEN FOR INSPECTION:
N/A

This beautifully presented family home is tucked away in a quiet court location with easy access to public transport, local schools and access to major arterials.

Property features:

- Three good sized bedrooms all with BIRs
- Master bedroom with its own ensuite and parents retreat
- Formal lounge with access to its own court yard
- Study nook
- Well equipped kitchen with stainless steel appliances
- Spacious family and meals area
- A central bathroom and a powder room on the ground floor
- Double garage
- A low maintenance backyard

This home is sure to impress you!!!!

A great entertainer family home, purchase with absolute confidence.

Mahesh Ranawaka // 0450 012 568

info@luxrealestatevic.com.au // www.luxrealestatevic.com.au



Sold

1/12 OFFICER COURT, WERRIBEE, VIC, 3030

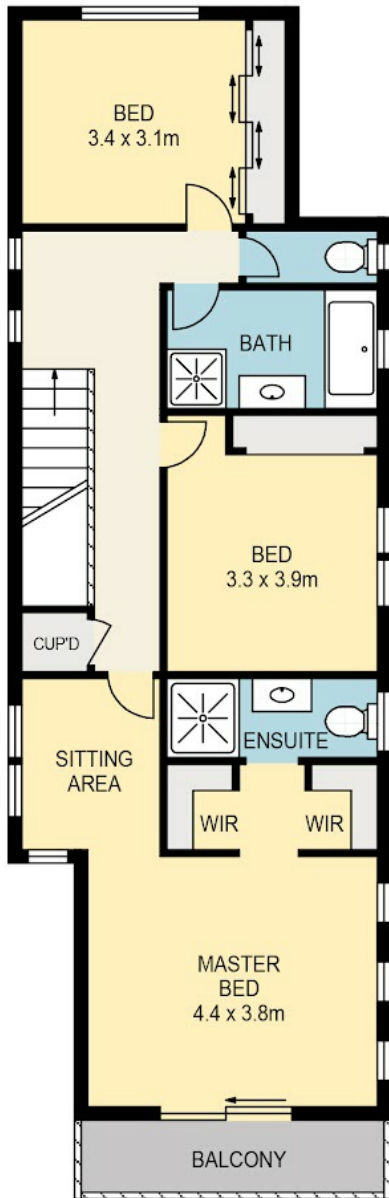
3  | 2  | 2 



Mahesh Ranawaka // 00450 012 568

info@luxrealestatevic.com.au // www.luxrealestatevic.com.au





1/12 OFFICER COURT, WERRIBEE

DISCLAIMER

PLANS SHOWN ARE FOR MARKETING PURPOSES ONLY. ALL DIMENSIONS ARE APPROXIMATE AND NOT TO SCALE. THEY ARE SUBJECT TO ERRORS AND INACCURACIES AND NO LIABILITY WILL BE ACCEPTED. INTERESTED PARTIES SHOULD MAKE THEIR OWN INQUIRIES.