



SOLD

COUNTRY LIVING FULL OF CHARACTER & PRIVACY

Built around 1914 as a Community Hall, this stunning character filled converted home will suit many astute buyers. Set on over 3 acres of reasonably flat grounds with a fully fenced paddocks, beautiful gardens and with bore water the options are endless.

Here are just some of the property features:

- Privacy, peace & quiet on 3 titles
- Stunning high ceilings with 2 mezzanine bedrooms
- Open plan kitchen/dining and living
- Sunroom/second living area
- Separate bathroom, laundry & wc
- Bakers wood oven, wood heating
- Light, bright & full of sun
- Plenty of scope to add accommodation (STCA)
- Spectacular gardens, hot house, veggie patch
- Chook house's, room for all the pets
- Fully fenced for the children, NBN satellite
- 2 shipping containers, workshop & storage galore
- Within 15 mins from Oatlands
- Within 1 hr & 30 mins from Launceston
- Within 1 hr & 15 mins from Hobart

Being so centrally located and only a short distance to Oatlands which is such a welcoming and expanding community with services including: a fantastic Hospital/Medical Centre, Pharmacy, District School (Kinder to Year 12); IGA Supermarket, RSL Club, Bowls Club, Golf Course, Callington Mill Distillery, boat ramp, many specialty shops, great cafes and more...

If your looking for that magical piece of Tasmania offering such diversity and room to move, don't delay and call Racquel Your Hobby Farm Specialist NOW! Properties like this do not last long.

"In 1908 the Closer Settlement Board began selling subdivided portions of the estate to interested farmers on generous terms, intended to encourage the new owners to transform former grazing land into homestead blocks and mixed farming. The experiment at Mount Pleasant (renamed Pawtella) proved a success, and by 1911 had a population of 117 and plans afoot for the construction of a State School. By 1914, the community had raised enough money to construct the Mount Pleasant Hall, which became the venue for regular dances, concerts, football club trophy nights, meetings, polling booths and Christmas functions. With the nearby

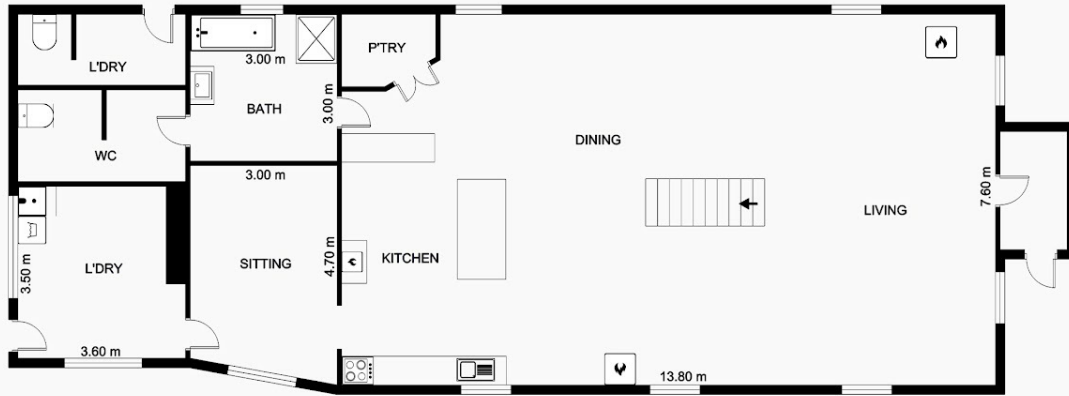
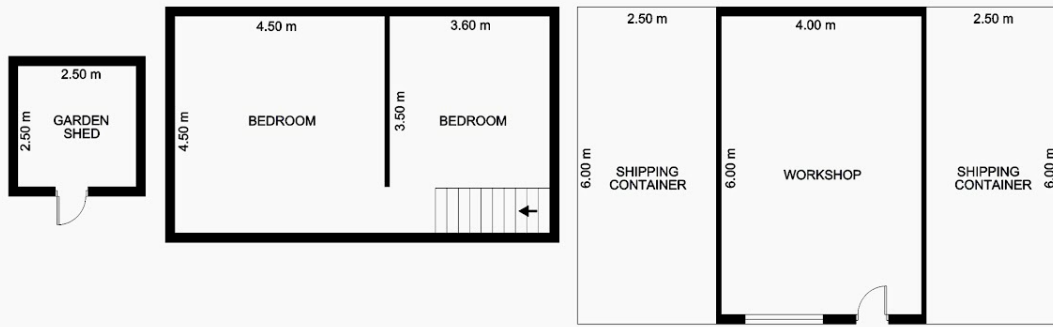
2 BED | 1 BATH | 0 CAR

PRICE:
\$440,000

OPEN FOR INSPECTION:
N/A



Racquel Cleaver
0497864680
racquel@atrealty.com.au
www.atrealty.com.au



948 Nala Road, Pawtella

Total approx. floor area: 192m²

Areas and dimensions are approximate and therefore this floor plan should only be used for illustrative purposes.

Real Estate Marketing by nextcreative.com.au



Disclaimer: Please note this floor plan is for marketing purposes and is to be used as a guide only. All dimensions are estimates only and may not be exact measurements.