

4 PARKVIEW ROAD, GLASS HOUSE MOUNTAINS, QLD, 4518



SOLD

METICULOUSLY MAINTAINED FAMILY HOME WITH DUAL LIVING...

This immaculately maintained and presented residence will please the most astute buyer. There are endless opportunities and something on offer for everyone. Comfortable as is, or with scope for you to make your mark with personal enhancements.

Offering a picturesque outlook over Mount Tibrogargan and sitting on a generous 2207 sqm parcel of flat land, this property has been designed for a multitude of lifestyle options.

Situated on a corner block, the property is fully fenced, and offers street access from two separate driveways, making it suitable for additional cars, boats, trailers or caravans. There is a generous three bay shed with three phase power, a carport and additional garden sheds. In total there are five bedrooms, two bathrooms, multiple living areas and a self-contained granny flat. This could generate a generous source of additional income, space for older children, guests, multi-generational families, or a work from home office. The additional living has it's own entrance, plenty of storage and air conditioning.

Sit back and relax overlooking the beautifully manicured, yet low maintenance gardens. Fruit trees, well established hedges, the property is both private and peaceful. There is plenty of room to kick around a ball or build a pool for the kids.

Within close proximity to the local Glasshouse Mountains primary school, local shops and railway line. Beerwah is 10 mins drive away, offering a large shopping precinct, both private and public schools, a local swimming pool, library and medical services. Less than hour drive from Brisbane airport.

This is a fantastic opportunity to secure a wonderful family home, which has been much loved by the original owners for the past 25 years. The property may be viewed by booking a private inspection or at our next advertised open home. Call Suzie for any further information M> 0400 880 932.

Inclusions;

- Ducted air conditioning
- Combustion wood-fired heater
- New carpet throughout
- Freshly painted throughout
- Generous wardrobing and storage
- Multiple living areas

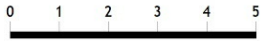
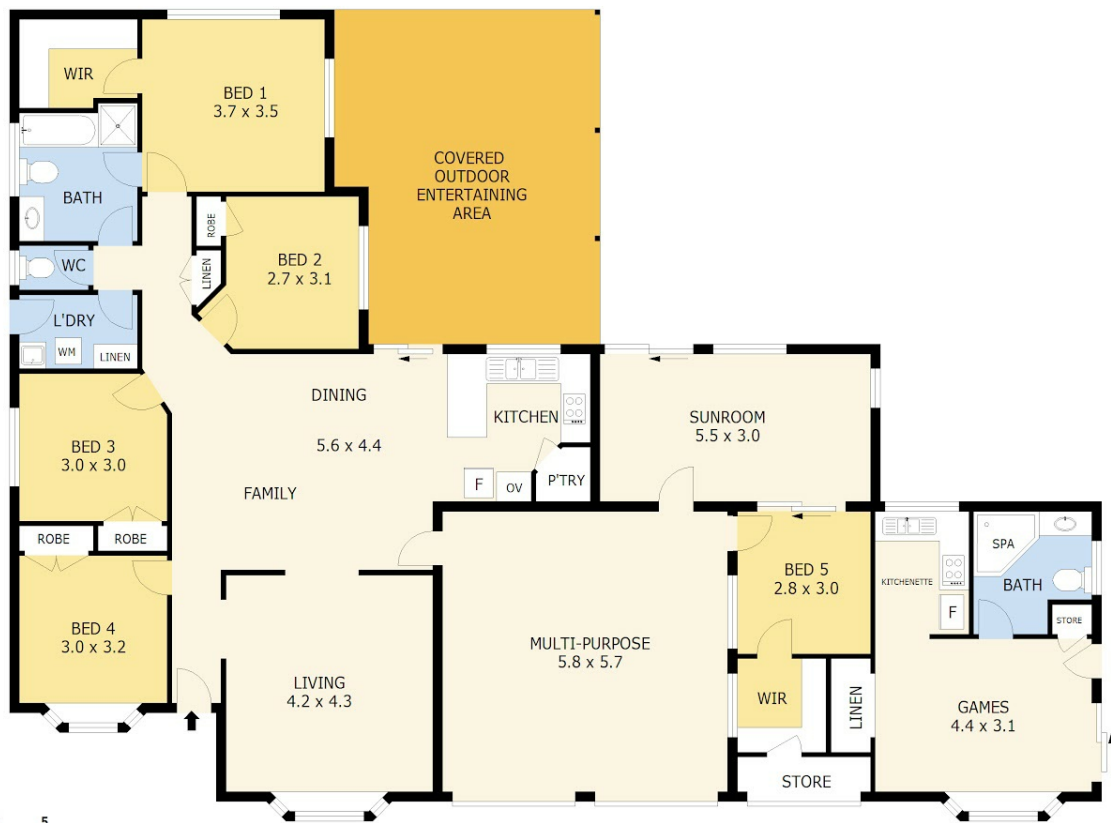
5 BED | 2 BATH | 3 CAR

PRICE:
\$875,000

OPEN FOR INSPECTION:
N/A



Suzie Smith
0400880932
suzie@atrealty.com.au
www.atrealty.com.au



Scale in metres. Indicative only. Dimensions are approximate. All information contained herein is gathered from sources we believe to be reliable. However we cannot guarantee its accuracy and interested parties should rely on their own enquiries.

Residence	- 219 m ²
Entertaining	- 34 m ²
Total	- 253 m ²

4 Parkview Road, Glass House Mountains

Disclaimer: Please note this floor plan is for marketing purposes and is to be used as a guide only. All dimensions are estimates only and may not be exact measurements.