

1/25 SCOTT ROAD, HERSTON, QLD, 4006



SOLD

140SQM + COUTYARD + 3 GARAGES + STORAGE! WOW!

What an fantastic opportunity on offer here! Amazing value for money only 2km from the CBD!

This unique 140sqm unit in the leafy suburb of Herston suits owner occupiers and investors alike.

The 3 bedroom unit features a secure lockup garage, and exclusive use of a massive private courtyard plus an extra tandem garage and a 2 extensive storage areas.

This private rear unit is of solid brick construction, in a small complex of 12 units, with a northerly aspect.

The unit is light and airy with high ceilings, and a separate kitchen flowing to generous dining and living areas. The master bedroom and retreat/study area has recently been freshly painted with new carpets.

Single level units this generous in size, with the exclusive use of extra garaging and extensive storage facilities are rare!

Features include:

- 140sqm internal living space
- 57sqm garaging (3 car spaces)
- 99sqm extra storage space
- Separate laundry and separate toilet
- BCC Rates \$430.40 per quarter
- Body corporate fees of \$1,015 per quarter

The location:

- Only 2km from the Brisbane CBD
- 600m to the Royal Brisbane and Women's Hospital
- 600m to Kelvin Grove State College
- 450m to Victoria Park Golf Complex
- 350m to QUT Kelvin Grove Campus

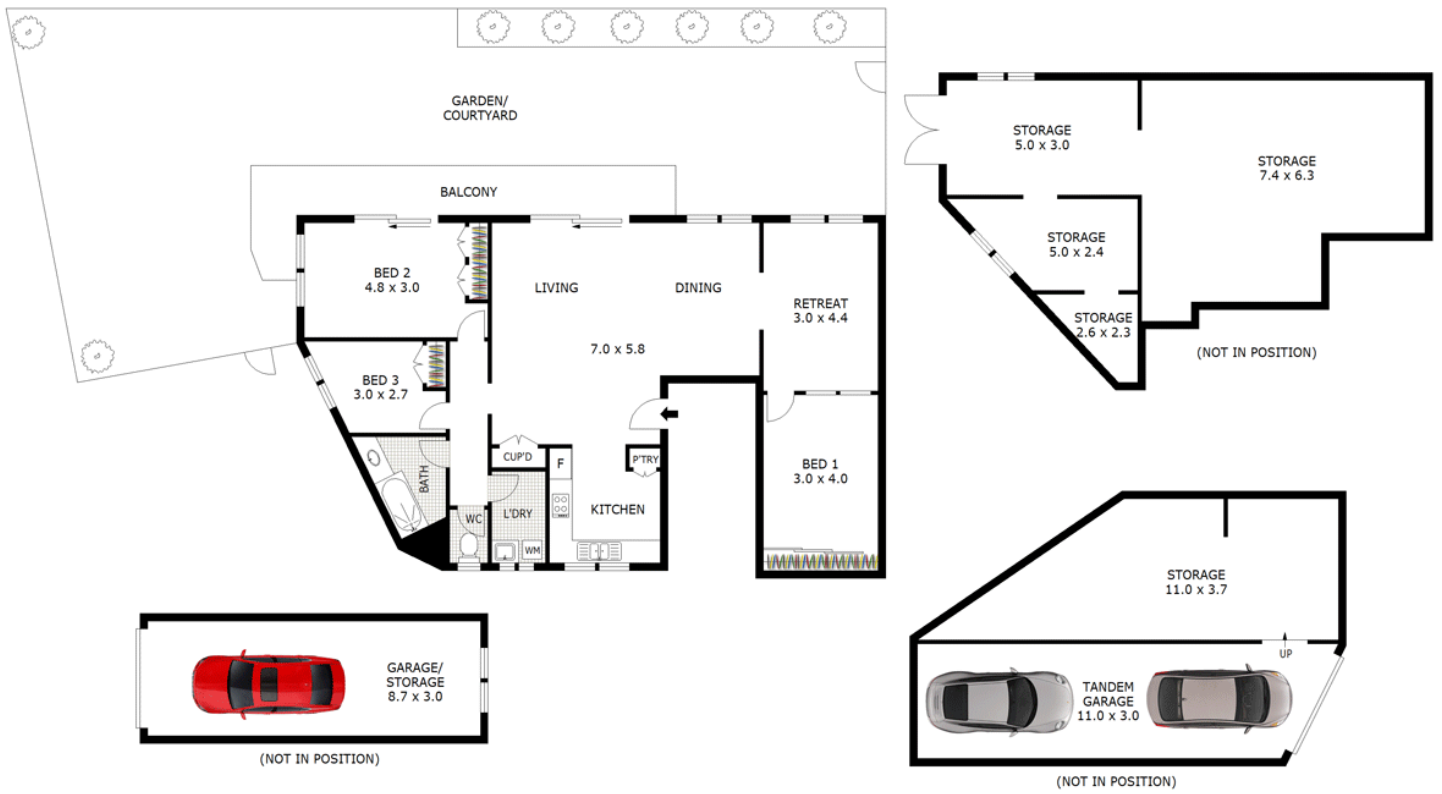
3 BED | 1 BATH | 3 CAR

PRICE:
\$590,000

OPEN FOR INSPECTION:
N/A



Jill O'Grady
0414518026
jillogrady@atrealty.com.au
www.atrealty.com.au



Scale in metres. Indicative only. Dimensions are approximate. All information contained herein is gathered from sources we believe to be reliable. However we cannot guarantee its accuracy and interested parties should rely on their own enquiries.

Residence	- 140 m ²
Storage	- 99 m ²
Garage & Storage	- 26 m ²
Tandem Garage	- 31 m ²
Total	- 296 m²



1/25 Scott Road, Herston

Disclaimer: Please note this floor plan is for marketing purposes and is to be used as a guide only. All dimensions are estimates only and may not be exact measurements.