



**SOLD**

## OVER 30 SQUARES AND READY TO MOVE IN!

Located in one of Warragul's finest estates, within walking distance of St. Josephs Primary School and Marist-Sion College, this quality home is ready to move in. With 3 separate living rooms, 4 bedrooms plus a study, this stunning home will suit a large family.

A garage a tradie would love, with room for a workshop area and storage, rear roller door to access the spacious backyard. The huge undercover alfresco area provides plenty of room for the large family with entertainment in mind.

Features include;

- 4 bedrooms PLUS a study/5th bedroom
  - Spacious kitchen with plenty of cupboards, wall oven and dishwasher.
  - Dining area off kitchen
  - 3 Separate Living rooms
  - 2 & 1/2 car garage with remote doors and internal access
  - New carpets throughout
  - Gas Ducted heating and Split system
  - Huge Undercover concreted alfresco area
  - 3 tanks provide water to the beautifully established, low maintenance gardens
- There is only one thing left to do.....MOVE IN! Call for an inspection today.

**5 BED | 2 BATH | 3 CAR**

**PRICE:**  
**\$713,000**

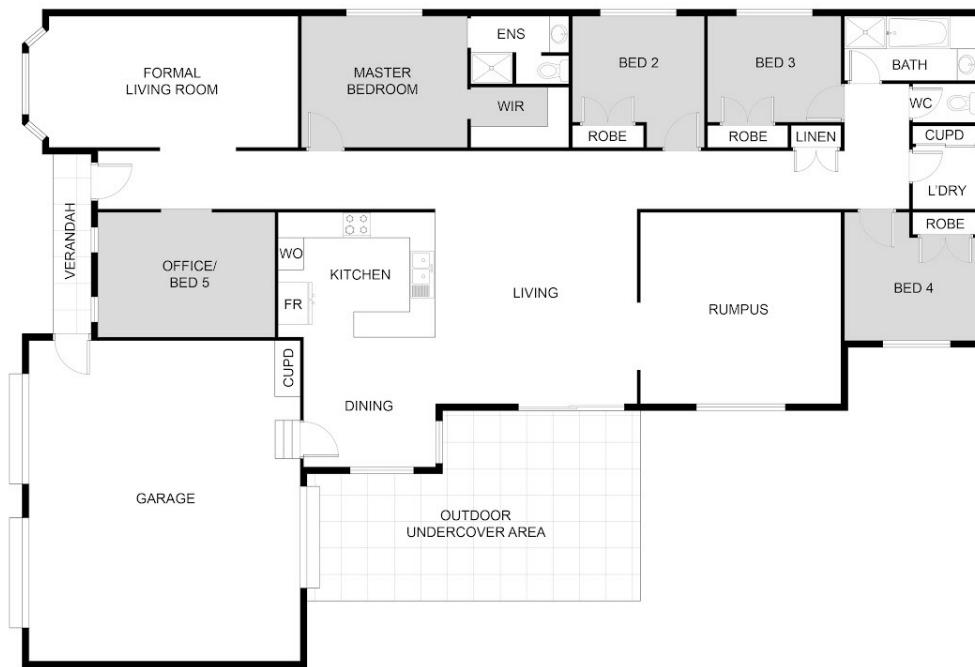
**OPEN FOR INSPECTION:**  
**N/A**



**Mel Ahearn**  
**0409183763**

[mahearn@atrealty.com.au](mailto:mahearn@atrealty.com.au)

[atrealtypropertysalesgippsland.com.au](http://atrealtypropertysalesgippsland.com.au)



FLOOR PLAN

This floor plan including furniture, fixture measurements and dimensions are approximate and for illustrative purposes only. BoxBrowmie.com gives no guarantee, warranty or representation as to the accuracy and layout. All enquiries must be directed to the agent, vendor or party representing this floor plan.

11 Glendon Drive, Warragul, Vic 3820

Disclaimer: Please note this floor plan is for marketing purposes and is to be used as a guide only. All dimensions are estimates only and may not be exact measurements.