



**SOLD**

## QUITE AND MODERN 7 YEARS NEW LOW MAINTENANCE TOWNHOUSE.

A well-maintained 7 year old two story townhouse with brick construction, a spacious and breeze through backyard.

Explore prices, growth, people, and lifestyle in bay side . This townhouse is a high standard with generous floor plans and quality fittings and finishes.

- \* Air-conditioned open plan living area
- \* Three good sized bedrooms all with built-ins and air-conditioning
- \* Modern and fully equipped kitchen including stone benchtops, S/S appliances, dishwasher, and pantry
- \* 2 modern bathrooms, en-suite to the main bedroom, 3 toilets
- \* Large storage area under the stairs.
- \* Separate laundry in the garage and 2 big storage cabinets.
- \* 1 garage lockup plus one private car parking space.
- \* Quite backyard with a leafs view.
- \* Secure complex with friendly onsite managers.
- \* Tenanted till 27/4/2022 with rent \$410 PW. Body corp approx \$2,500 P/A.

Only minutes away from all amenities, schools (primary and Secondary), Childcare center, Shopping Centers, Parklands, and much more.  
Bus stop at your door step. Walk to schools, park, Wynnum Plaza Shopping centre, and Lindum train station. Easy access to Gateway, fifteen minute drive to airport.

Contact Peggy on 0404 880 777 for further details on this property.

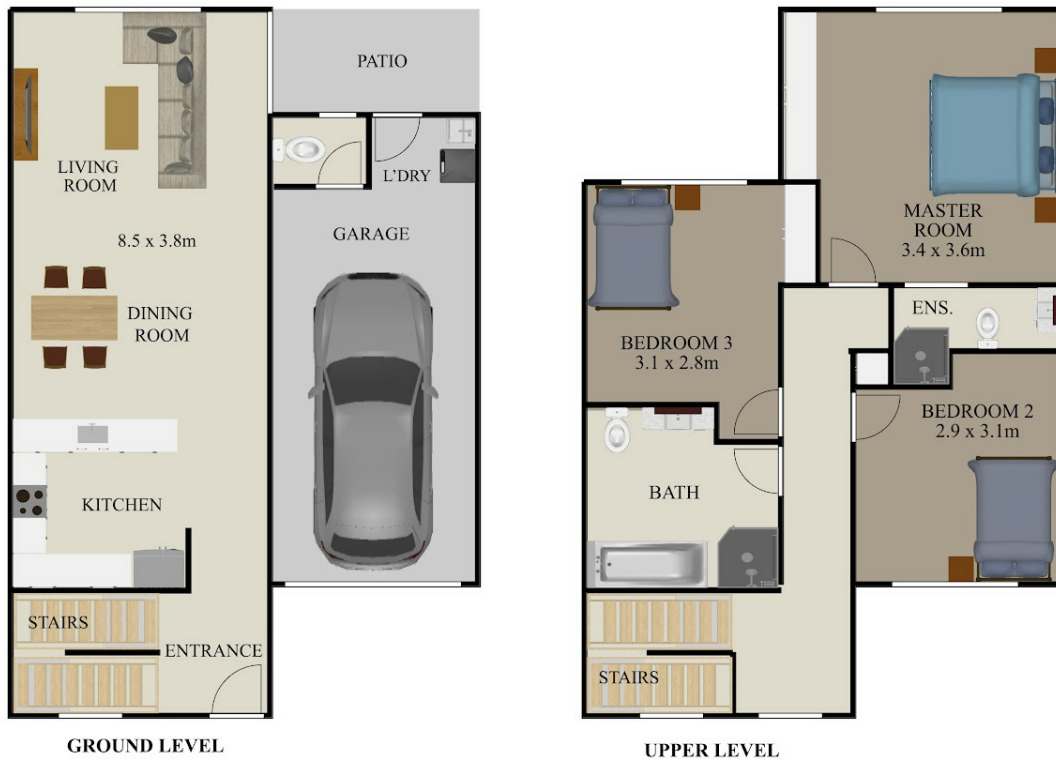
**3 BED | 2 BATH | 2 CAR**

**PRICE:**  
\$460,000

**OPEN FOR INSPECTION:**  
N/A



**Peggy Liu**  
**0404880777**  
peggy@atrealty.com.au  
[www.atrealty.com.au](http://www.atrealty.com.au)



### Floor Plan of 37-12 Singh St Wynnum West

This floor plan is not to scale. Areas and dimensions are approximate and therefore floor plan should only be used for illustrative purposes, Plants and furniture are decorative only.

Disclaimer: Please note this floor plan is for marketing purposes and is to be used as a guide only. All dimensions are estimates only and may not be exact measurements.