



SOLD

ESCAPE THE RAT RACE

Presenting to the market this extremely well maintained lowset northerly facing Five Bedroom rendered brick home with separate home office/multi-purpose room, with an amazing level yard, situated on an acre and a half, all within walking distance to the local IGA, Bakery, Restaurants, Doctors, Gym and Childcare Centre!

Upon entering the home, you will appreciate it is as neat as a pin! From the entry you are greeted with one of the spacious open plan living areas, before deciding whether to explore the master to your right or the other bedrooms off to your left, the design invites you to the hub of the home to socialise as preparations for the evening meal are taking place, there is plenty of space to relax and for those balmy nights these areas offer air-conditioned comfort.

The spacious kitchen is one of the homes many standout features with 2pac soft close cabinetry, quality European appliances including state of the art SMEG oven and an amazing Ariston 6 Burner Gas cooktop and a multitude of storage cupboards making it perfect for those that love to cook or entertain. For those cold nights, retire in the warmth of the wood burner in the family room while you watch a movie.

Flowing seamlessly from the hub of the home the expansive covered outdoor entertaining patio forms part of the house, while you watch the kids and fur babies run themselves ragged in the enormous fenced yard take in the peace and tranquility and listen to the calls of nature! There's room for a pool without losing the yard too.

The home boasts five well sized bedrooms – the main bedroom is located separately offering a built in robe, ensuite, air-conditioning and ceiling fan. The other four bedrooms all offer built in robes, ceiling fans, a couple even have air conditioning. All are serviced by the main bathroom and separate toilet and vanity. 8 Clematis Court offers it's new owners a relaxing rural feel, great neighbours an engaging layout with the convenience of town water, shops, schools and transport minutes away.

This really is a rare gem and one you could put your mark on very easily. Don't delay call Natalie today on 0419 689 309.

At a Glance:
Fully Fenced 6,000m2 Block
2-Bay Shed

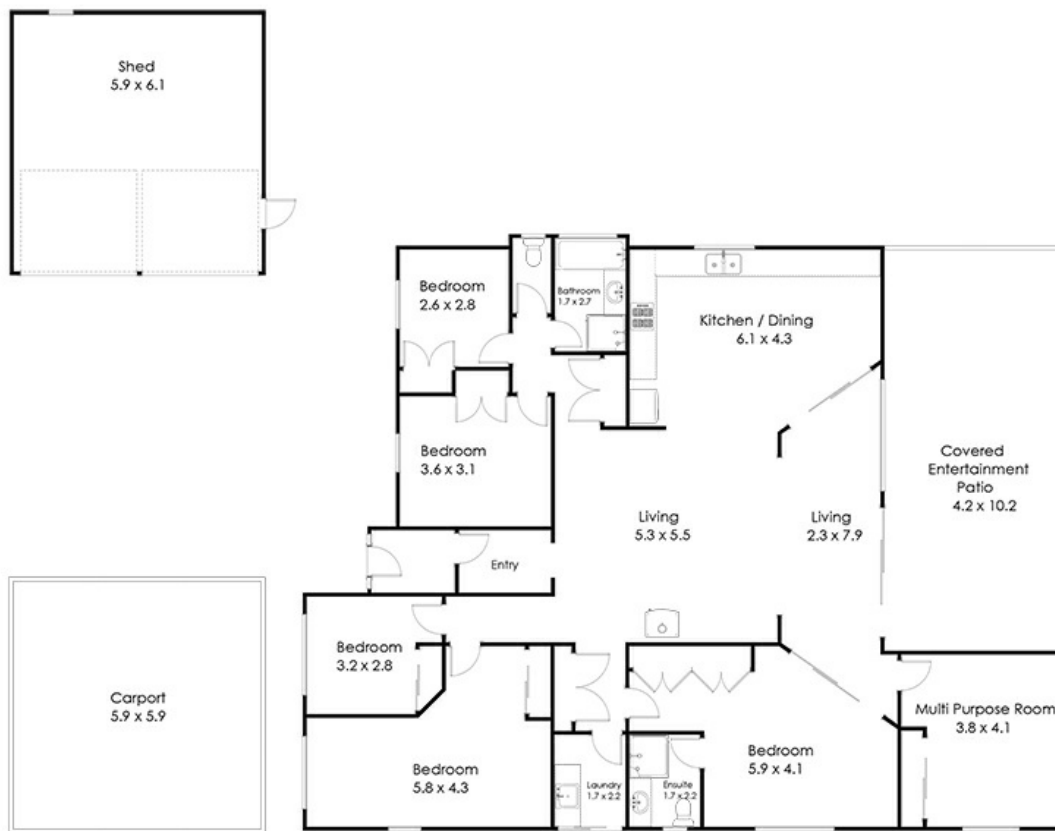
5 BED | 2 BATH | 4 CAR

PRICE:
\$1,152,000

OPEN FOR INSPECTION:
N/A



Natalie Johnston
0419689309
natalie@atrealty.com.au
[Natalieatrealty](https://www.atrealty.com.au)



8 Clematis Court Cashmere 4500

Whilst every attempt has been made to ensure the accuracy of the floor plan contained here, measurements of doors, windows rooms and any other items and structures are approximate and no responsibility is taken for any error, omission or mis-statement. Bathroom and Kitchen fittings, Cupboards and door types and laundry appliances and windows are tokens and approximate the actual fitting installed.

This plan is for illustrative purposes and should be used as such by any prospective buyer. Plan drawn by Eagle Eye Photography Service, www.eagleeyenq.com.au Copyright 2021. All rights reserved. No reproduction without license, contact photographer for more information.

@realty

Disclaimer: Please note this floor plan is for marketing purposes and is to be used as a guide only. All dimensions are estimates only and may not be exact measurements.