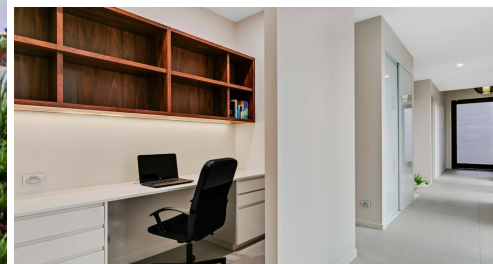
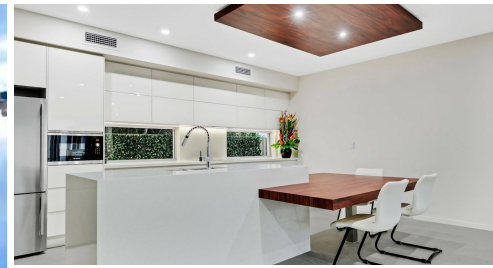


15 MARINA VIEW DRIVE, PELICAN WATERS, QLD, 4551



FOR SALE

MARINA VIEW STUNNER

Proudly presented to the market is this Exquisite designer home built by award winning Builder Mee's Construction.

Located in this highly desirable area of Marina View drive, with a short stroll to golden beach and pelican waters shopping village and public transport.

The home has a clever floor plan with excellent separation for privacy and living.

A striking entry with huge timber & glass door & very high ceilings, on offer are 3 good size bedrooms with the Master having a walk-in wardrobe custom fitted cabinetry and a stunning bathroom with floor to ceiling tiles.

Through out the house is a neutral fresh colour scheme lots of natural light and ducted aircon.

Cleverly thought out is this sleek kitchen, with a good size Island bench and a attached timber dining table which creates more space in the living area, also on offer is a walk-in Pantry and quality appliances.

The open plan living and dinning lead directly out to the fabulous large undercover patio area with built in BBQ.

Located towards the front of the house is the Media/ lounge, with soaring high ceiling and custom drapes this is a fabulous room that could be used as a Multi Purpose Room and leads to the private enclosed court yard.

Also on offer is a office Nook huge laundry with ample of cabinets and storage, a stunning family bathroom with Sauna and floor to ceiling tiles.

This home has all the refinements that you would expect from a Jon Mee's home

2 Car garage with epoxy flooring

Electric gate entry

Low maintenance gardens

Ducted Aircon High Ceilings

Fabulous Location

3 BED | 2 BATH | 2 CAR

PRICE:

offers over \$1,195,000.

OPEN FOR INSPECTION:

N/A



Jacqueline Dalton

0439726050

jdalton@atrealty.com.au

www.atrealty.com.au