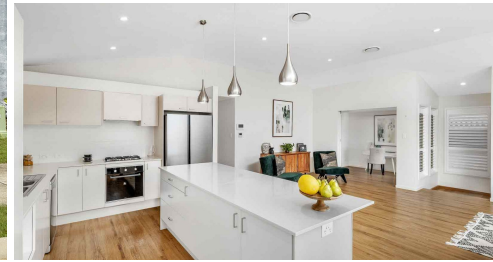
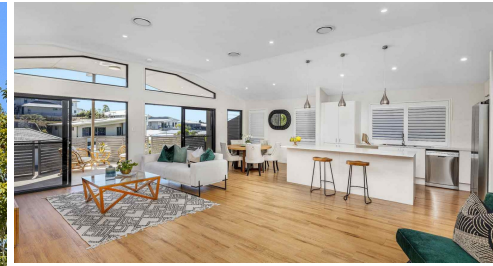


43 PARKVIEW DRIVE, SPRINGFIELD LAKES, QLD, 4300



**SOLD**

## THE SUMMIT GEM - CONTEMPORARY MODERN FAMILY HOME WITH OPTIONS

Flawlessly presented to the market with its elegant interiors and chic contemporary style, this appealing family home is in a class of its own. Resting on the crest of this suburban hill, with a great northerly aspect sits this modern family dream home. Sitting on a 400sqm block this home is completely designed for comfort and functionality while still achieving a big and bold contemporary statement. It fully achieves the brief of open plan living, starting with the high-pitched ceilings flowing all the way through to the fully equipped kitchen and light-filled, spacious living/dining area. The large glass sliding doors create a greater sense of space and allow you to take in the picturesque suburb outlook, with a back deck designed for people who love to entertain. Sitting high on the hill, there are great breezes with plenty of cross ventilation. There is a neat study/playroom off main living area with sliding doors and side deck access. Both bathrooms are sleek and fitted with quality finishes.

The lower level of the home gives you plenty of options, starting with its own separate entry, featuring a large multipurpose area complete with bathroom. It is perfect for a media room, teenage retreat or home office. There is even potential dual living capacity. There is both internal and external access to this lower level. The oversized garage is clean and neat with plenty of space for storage. The garden is elegant and low maintenance. Located in the heart of The Summit at Springfield Lakes - a stones throw away from one of the many lakes, free tennis courts and parks, this property offers an exceptional lifestyle choice. Springfield Lakes Public School, village conveniences and transport, Orion Shopping Complex and Orion Lagoon, perfect for summer are all a very short drive away.

5 bedroom modern home situated on a 400sqm block  
Expansive living and dining space with direct access to enormous balcony with lake glimpses  
Bright and spacious interiors feature open plan living/dining with raked ceilings  
Lower-level multipurpose room with bathroom  
Interiors flow to a choice of entertaining spaces and backyard  
Huge balcony to the front  
Side Deck with aluminium external shutters  
Huge back deck, private and flowing on to the rear grassy area and with great bush outlook  
Gourmet island kitchen - stone benchtops and sleek appliances

**5 BED | 3 BATH | 2 CAR**

**PRICE:**  
\$920,000

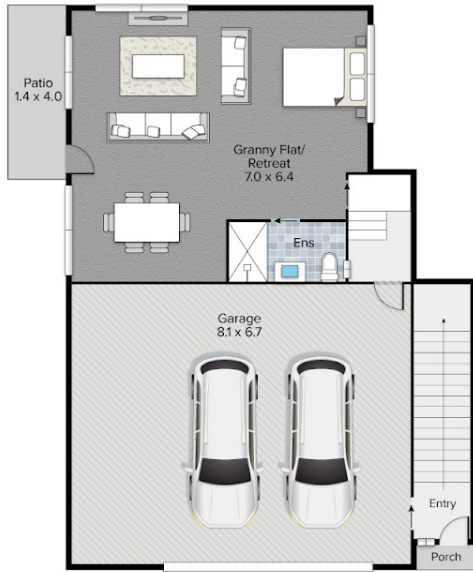
**OPEN FOR INSPECTION:**  
N/A



**Angela Cholakos**  
**0414866770**  
angelacholakos@atrealty.com.au  
[www.atrealty.com.au](http://www.atrealty.com.au)

# 43 Parkview Drive, Springfield Lakes

 x 4  
  x 3  
  x 2



Floor Plan  
**Ground Floor**



Floor Plan  
**Upper Floor**

Internal: 255m<sup>2</sup>  
 External: 53m<sup>2</sup>  
**Total: 308m<sup>2</sup>**

Conditions of use: All floor plan measurements, positions and angles are approximate and for illustrative purposes only. Hausable makes no guarantee as to the accuracy of any measurements, symbols or textures as the intent of this floor plan is to indicate the approximate layout of the property only, and must not be relied upon for any other purpose, whatsoever. While every attempt at accuracy is made, potential buyers must seek their own independent professional measurements to determine the homes suitability before purchase. Hausable accepts no responsibility or liability for any loss, however arising, from the use of this floorplan. This floor plan must not be reused, or resold for any reason without prior written consent from Hausable Pty Ltd.

**Disclaimer:** Please note this floor plan is for marketing purposes and is to be used as a guide only. All dimensions are estimates only and may not be exact measurements.

