



SOLD

POSITION POSITION - LARGE APARTMENT AWAITS YOUR INSPECTION.

Relax in comfort with this 3 bedroom 2 bathroom spacious apartment, conveniently positioned on the near the borderline of Coolangatta, with Tweed facilities at your grasp.

KEY FEATURES :

- Tiled kitchen/living
- Balcony off the living area.
- Large master bedroom with built-in robe and ensuite
- Bathroom and seperate laundry
- Undercover secure car space
- Dishwasher
- Airconditioner
- Pet friendly upon Body corp approval

DETAILS :

- Body Corporate \$51.55 approx per week (inclusive of water)
- Rates \$2685.53
- Market rent is \$590 or \$650 per week
- Built: 2003

LOCATION :

These apartments are conveniently positioned virtually on the Tweed/Coolangatta borderline which means you are just a short stroll to Bay Street, Tweed Mall Shopping Centre, Coolangatta Shops, World-class beaches, hospital, and clubs.

You will enjoy surfing & walks along the beautiful white sandy beaches & or just leave the car behind and head to the restaurants and nightlife that Coolangatta & Tweed offer.

The Gold Coast Airport & Southern Cross University is within a (7) minute drive.

AGENTS COMMENTS :

3 BED | 2 BATH | 1 CAR

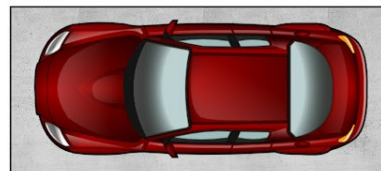
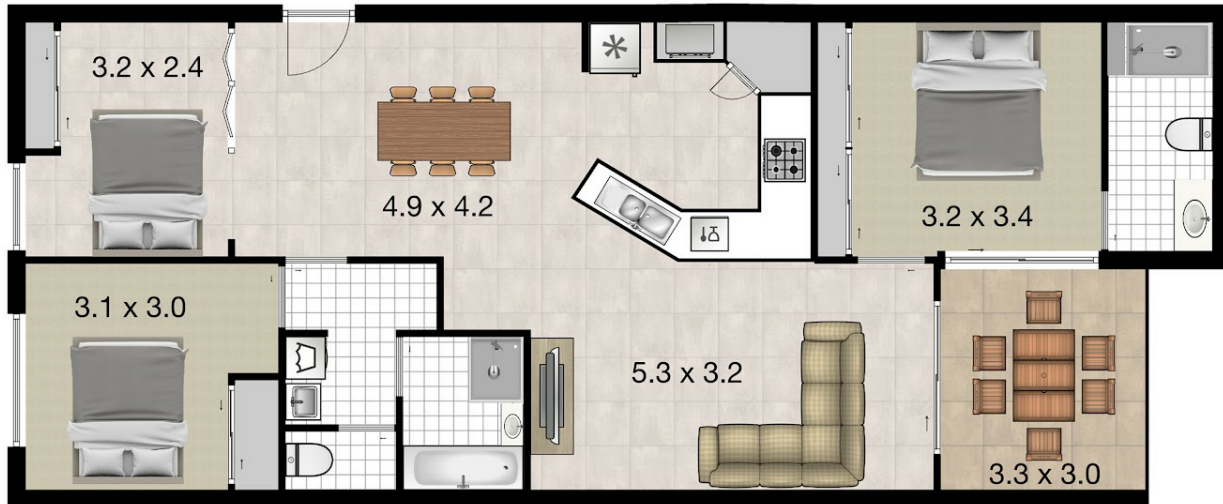
PRICE:
\$669,000

OPEN FOR INSPECTION:
N/A



Sharon Smythe
0412195500
sharonsmythe@atrealty.com.au
www.atrealty.com.au

Total Approximate Floor Area 95 sam



Basement
Carpark
5.5 x 2.3

Whilst every attempt has been made to ensure the accuracy of the floor plan. Measurements of doors, windows rooms and any other items are approximate and no responsibility is taken for any error, omission or misstatement. This plan is for illustrative purposes only and should be used as such by any prospective purchaser.

Disclaimer: Please note this floor plan is for marketing purposes and is to be used as a guide only. All dimensions are estimates only and may not be exact measurements.