

1 PETER CLOSE, COFFS HARBOUR, NSW, 2450



**SOLD**

**SOLD BY CHERYL DONALDSON 0466 037 468**

This home has a lot to offer 204 m<sup>2</sup> internally and plenty of parking, situated close to the private hospital and a very short distance to the bus stop.

Upon entering this three bedroom impeccable residence you will be captivated by its abundant light and great sense of space. Picture yourself preparing and cooking your family meals in the expansive kitchen with 40 mm Caesar stone Benchtops as well as an island bench that serves as a breakfast bar. There is a walk in pantry and quality cooking appliances. Some of the wonderful features includes 3 bathrooms, 4 toilets, stunning main bathroom with a clawfoot bath all fitted out with luxury fittings. The main bedroom is king size and airy and has a oversized walk in robe and also a luxury ensuite. Bedroom 2 and 3 are queen size with large built-in robes and fans. There is a large double lock-up garage with an ensuite that's handy for a rinse off when coming home from the beach, even a ramp for wheelchair access. At the rear of the home there's plenty of room for offstreet parking for a caravan and the boat, there's a large solar system (6.6 kilowatt) in place to keep electricity costs low. The backyard is fully fenced and has been designed with privacy in mind situated on a beautifully manicured corner block close to the private hospital, a short distance to Coffs Harbour shopping Plaza and only 5 minutes to the beach this property has it all. Call Cheryl Donaldson on 0466 037 468

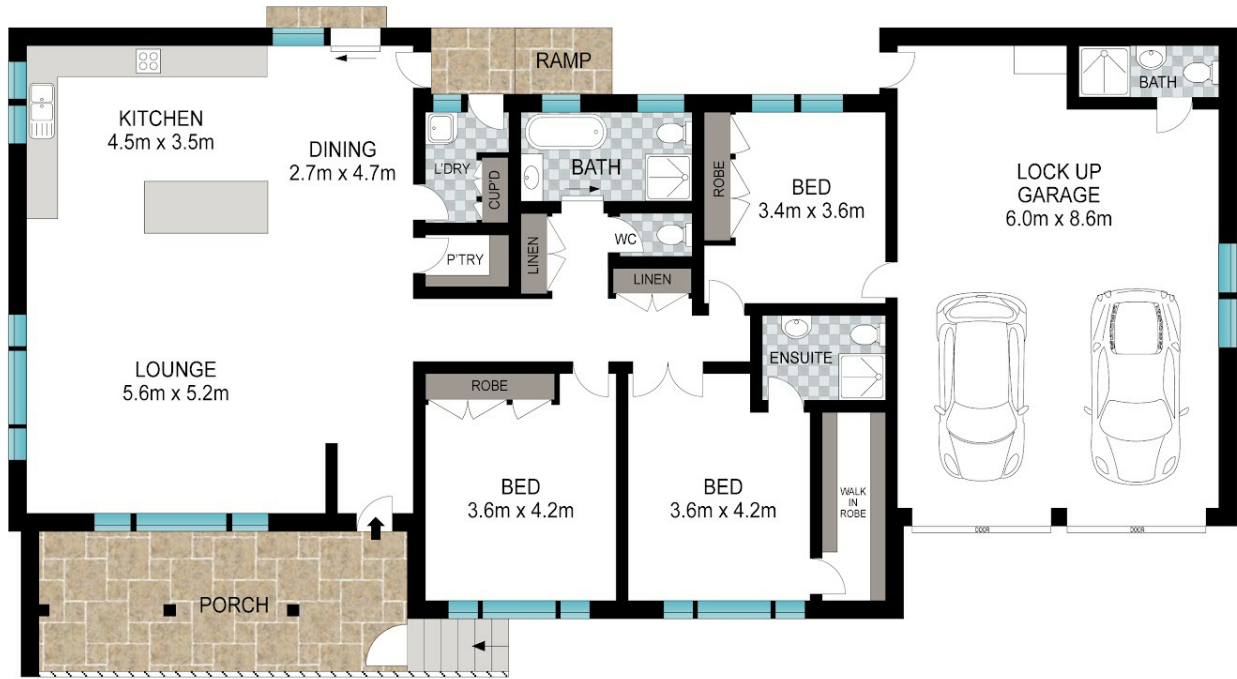
**3 BED | 3 BATH | 2 CAR**

**PRICE:**  
**\$800,000**

**OPEN FOR INSPECTION:**  
**N/A**



**Cheryl Donaldson**  
**0466037468**  
cheryl@atrealty.com.au  
[www.atrealty.com.au](http://www.atrealty.com.au)



INT: 204 m<sup>2</sup>  
EXT: 21 m<sup>2</sup>

Scale in metres. Indicative only. Dimensions are approximate. All information contained herein is gathered from sources we believe to be reliable. However, we cannot guarantee its accuracy and interested persons should rely on their own enquiries.

1 Peter Close, Coffs Harbour



Disclaimer: Please note this floor plan is for marketing purposes and is to be used as a guide only. All dimensions are estimates only and may not be exact measurements.

**Cheryl Donaldson**  
0466037468  
cheryl@atrealty.com.au  
[www.atrealty.com.au](http://www.atrealty.com.au)

