



**SOLD**

**HOT, HOT, HOT! -BUT OH, SO COOL! AND CONVENIENT & THE OWNER SAYS: IT MUST BE SOLD!**

With 4 newly installed split system air-cons., you will be cool!  
Quiet position & convenient to everything this partially renovated 3 bedroom Townhouse is set back in a small boutique complex of 9 homes. Space for 2 cars in front of the home within the secure gated estate. Three big bedrooms overlook a quiet fenced courtyard and there's loads of storage in this spacious 2 level home.

- 4 New split-system air-conditioners
- Newly painted throughout
- Huge main bedroom
- Big 2nd & 3rd bedrooms all with built-ins
- Study nook
- Loads of storage
- Access external secure large item storage shed
- Window & door security
- Very quiet position in Complex
- Secure large item storage shed
- Rear secure garden shed
- Current full external repaint by Body Corp in progress
- Private fenced courtyard
- Secure complex with room for 2 cars

Several excellent Public & Private & Schools Tertiary Facilities including:  
St Peters Catholic Primary, Redeemer Lutheran College 3kms,  
Eight Mile Plains State School 350m, Rochedale State High School 2.5kms,  
Montessori, Camden & Calvery Colleges & Griffith University, Logan, Nathan & Mt Gravatt Campuses, and many more

25min drive to Brisbane City  
Access to SE QLD's 3 Major Motorway's entry/exits including:  
Gateway, Pacific, and Ipswich Motorway

**3 BED | 1 BATH | 1 CAR**

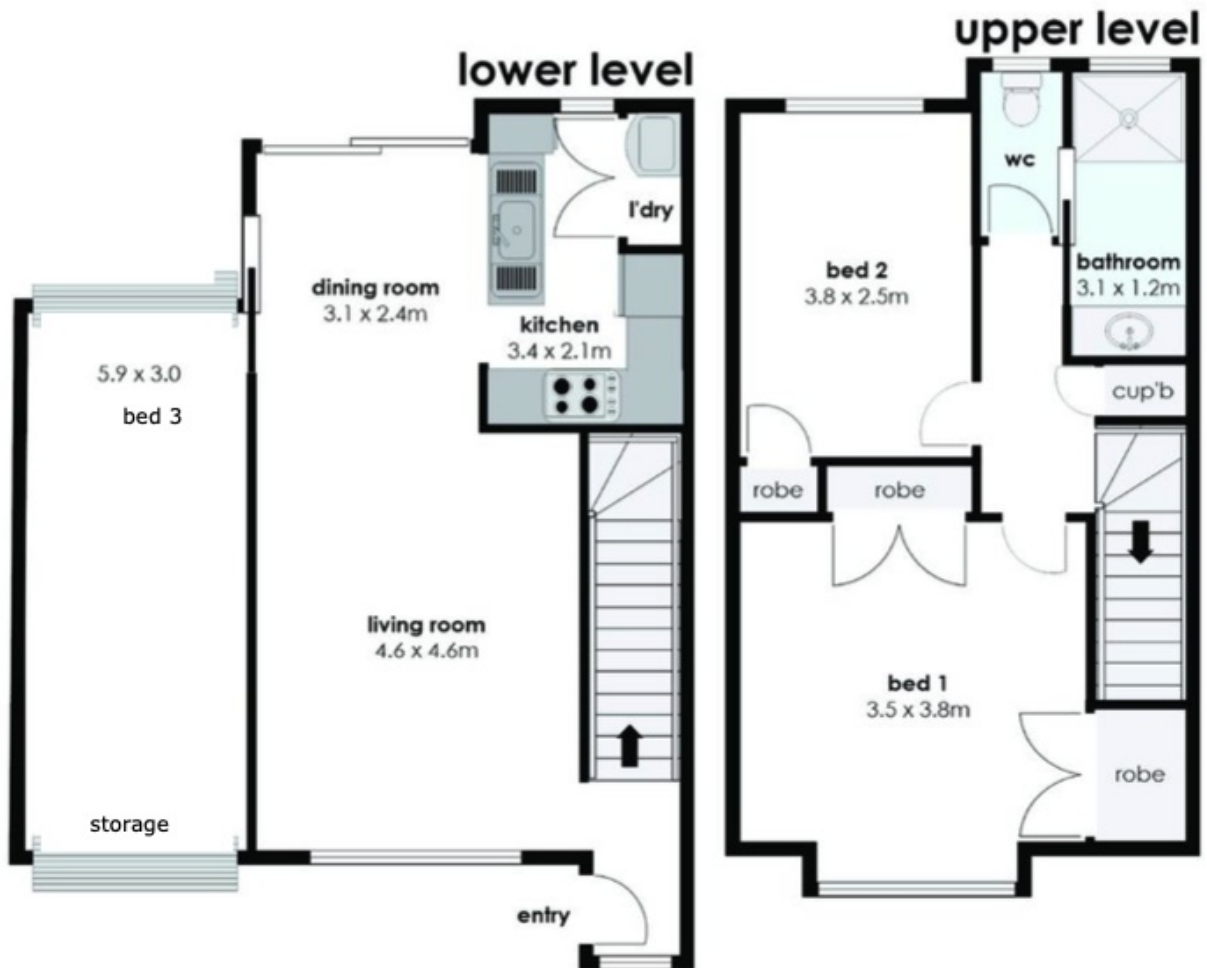
**PRICE:**  
\$332,000

**OPEN FOR INSPECTION:**  
N/A



**Kim Martin**  
**0414341063**  
kimmartinproperty@atrealty.com.au  
[www.atrealty.com.au](http://www.atrealty.com.au)

# 4/2792 Logan Rd, Underwood



While every attempt has been made to ensure the accuracy, measurements are approximate and no responsibility is taken for any error, omission or misstatement. This plan is for illustrative purposes only and should be used as such by prospective purchasers.

Disclaimer: Please note this floor plan is for marketing purposes and is to be used as a guide only. All dimensions are estimates only and may not be exact measurements.