

# SOLD

## LIVE THE LIFE OF LUXURY IN HAVEN

Haven apartment located in the heart of Newstead, get intimate with icons in food, lifestyle and wellness for a more curious, remarkable and enlivened you. Haven Newstead is a dining and wellness precinct tucked into the base of the Haven Newstead Apartments, with plenty of free onsite parking. It's your neighborhood hub of culinary goodness, just steps from Gasworks.

This beautiful apartment with :

- \* East facing with amazing views.
- \* Generous open plan living areas with floor to ceiling glazing to showcase spectacular views.
- \* Modern kitchen with stone island bench ,European stainless steel appliances including gas cooktop, electric oven and dishwasher.
- \* Master bedroom with ensuite and built in wardrobe.
- \* Large second bedroom with built-in-robe.
- \* Ducted air conditioning.
- \* Secure car parking.
- \* Instant high-speed internet, WiFi and NBN ready plus Foxtel ready.
- \* 26th roof floor featuring a heated infinity pool, yoga lawn, sunset cocktail bar, dining terrace, teppanyaki bar and pizza oven.
- \* 5 star hotel style lobby with dedicated onsite manager and concierge services including dry cleaning, car washing, cleaning, restaurant bookings and more.
- \* Ample free visitor car parings.

Location features:

- \* Directly across the road from the Gasometer and Gasworks Plaza featuring a full line Woolworths and a number of award-winning restaurants .
- \* Across the road from Newstead River Park.
- \* CityGlider bus stop right out the front.
- \* City Cat and City Ferry Terminals are just 500m away.
- \* Less than 5 minutes to James Street.
- \* Less than 5 minutes to Teneriffe.
- \* 5 minutes to Bowen Hills Train Station.

2 BED | 2 BATH | 1 CAR

**PRICE:**  
\$584,000

**OPEN FOR INSPECTION:**  
N/A



**Peggy Liu**  
**0404880777**  
peggy@atrealty.com.au  
[www.atrealty.com.au](http://www.atrealty.com.au)

# HAVEN

NEWSTEAD

## APARTMENT TYPE D2

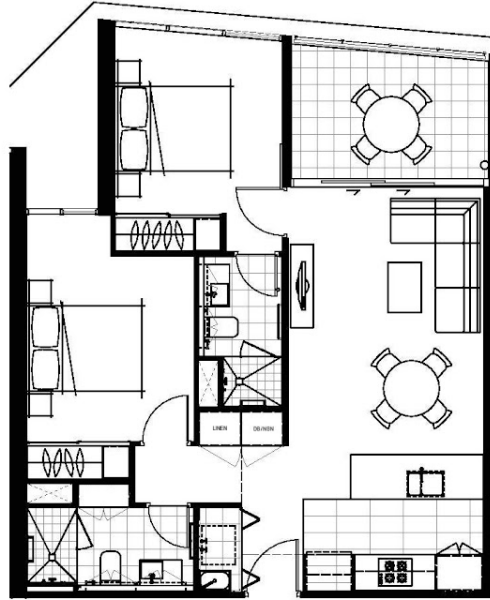
2 BED 2 BATH 1 CAR

INTERNAL AREA	70 m <sup>2</sup>
BALCONY AREA	9 m <sup>2</sup>
<b>TOTAL AREA</b>	<b>79 m<sup>2</sup></b>

Brisbane River



GasWorks



Disclaimer: Please note this floor plan is for marketing purposes and is to be used as a guide only. All dimensions are estimates only and may not be exact measurements.