



SOLD

UNDER OFFER IN DAYS BY CLARISSA ALSOP

Set behind a rendered façade this modern home with double door entry will delight. Located in the sought after Evermore Heights Estate this home has lots of eco-friendly extras including solar panels, rainwater tank and a solar hot water system. Imagine living across from a stunning park with mature trees and kids' playground along with a basketball court.

- Built by Impressions Homes in 2010
- Set on a 473 sqm block
- Located in the Evermore Heights Estate
- 198 Sqm of living and 252 sqm in total area
- Ducted evaporative air conditioning
- Separate study
- Theatre room is private and the ideal place to watch a movie and relax
- Galley style kitchen with island bench
- Large open plan living areas
- 31 Course ceilings to entry and main living areas
- 4th bedroom or optional activity room offers double door access from the main living areas
- Master bedroom offers a spacious room with park views
- Timber bifold doors from the main living area open out to the decked alfresco
- Low maintenance rear yard
- Solar panels to help with reducing running costs
- Low maintenance home in an established area
- Great location with all amenities within easy reach including parks, shopping, transport links

**Please note this property is currently tenanted and appointments can only be accommodated at the scheduled time. The tenant is on a fixed lease which expires on 28/12/2021. Great tenant in place, if you are looking to invest or can be sold with vacant possession for the owner occupier.

4 BED | 2 BATH | 2 CAR

PRICE:
\$430,500

OPEN FOR INSPECTION:
N/A



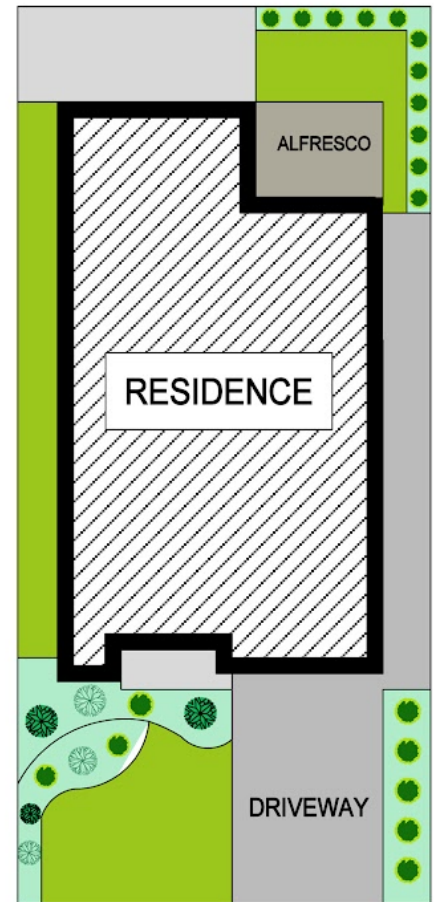
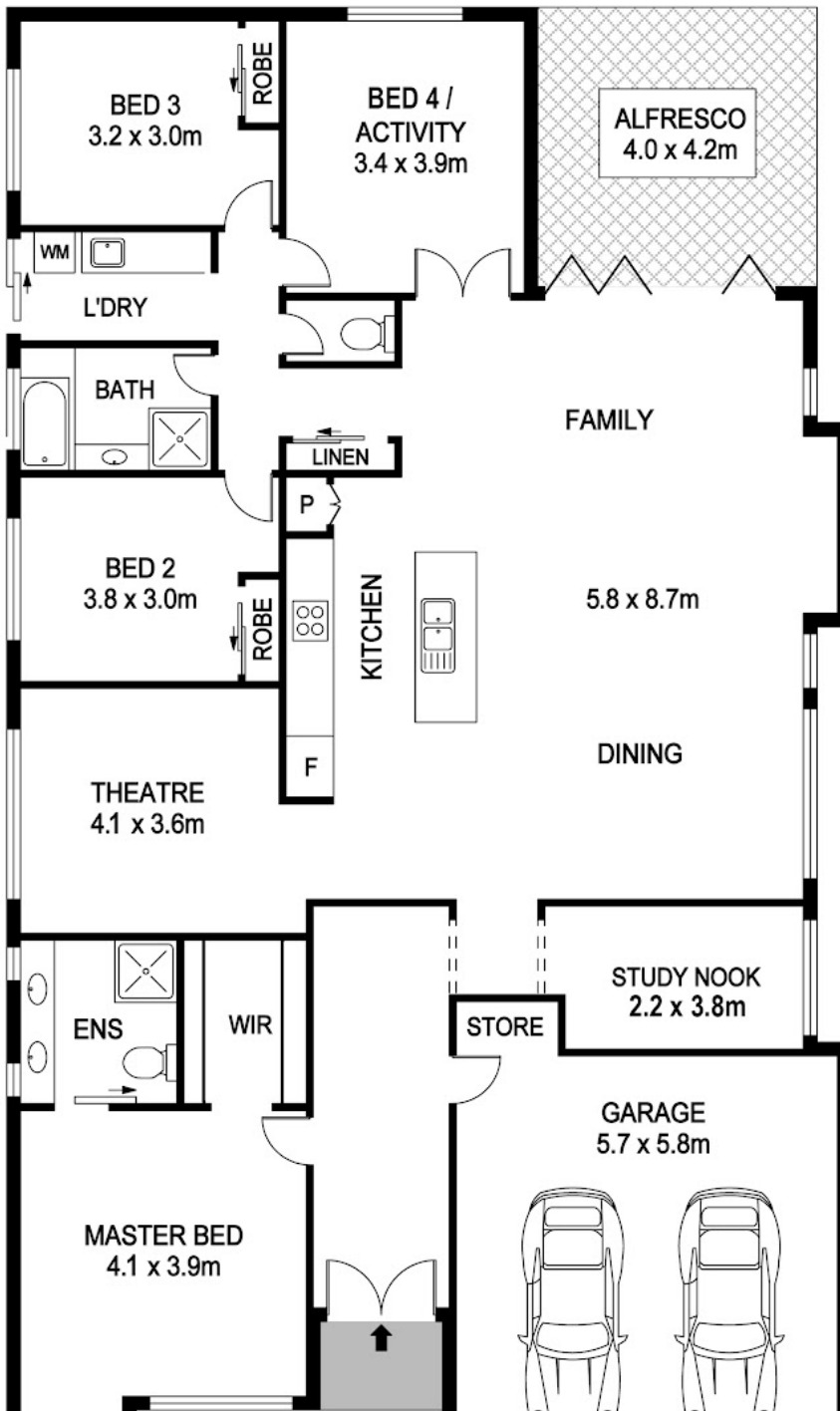
Clarissa Alsop
0421827669
clarissa@atrealty.com.au
www.atrealty.com.au

15 Jerboa Green BALDIVIS



Block Size 473m² | 3/4 Bedrooms | 2 Bathrooms | 2 Car
Internal 198m² | External 54m² | Total 252m²

Clarissa Alsop | 0421 827 669



Disclaimer: Please note this floor plan is for marketing purposes and is to be used as a guide only. All dimensions are estimates only and may not be exact measurements.



REAL ESTATE FLOOR PLANS | houseguru.com.au | © House Guru Real Estate Photography™

Whilst every attempt has been made to ensure the accuracy of the floor plan contained here, measurements of doors, windows, rooms and any other items are approximate and no responsibility is taken for error, omission or mis-statement. This plan is for illustrative purposes only and should only be used as such by any prospective purchaser. The services systems and appliances shown have not been tested and no guarantee as to their operability or efficiency can be given.

Clarissa Alsop
0421827669
clarissa@atrealty.com.au
www.atrealty.com.au

