



FOR SALE

RARE SUBDIVISION OPPORTUNITY (STCA) - ATTENTION INVESTORS

Alexandria Cottage 'circa 1830' Full of character and charm this gorgeous stone cottage has all the characteristics you could expect from this era. Positioned on a huge 2851m2 parcel of flat land and within walking distance to all the conveniences of Oatlands, this is a rare opportunity not to be missed and would be ideal for retirees or investors.

Here are just some of the property features:

- Sandstone walls, high ceilings, feature finials, chandeliers, original floorboards
- Expansive open plan living/dining area
- Second sitting room, undercover patio area
- Separate kitchen, cosy wood heating
- Large bedrooms with feature fireplaces
- Bathroom with claw foot bath, separate shower
- NBN, town water, off street parking
- Scope to put your own stamp on – 'renovator's delight'
- Huge backyard with original gardens ready to be showcased again
- Rare subdivision opportunity (STCA) – zoned General Residential

Oatlands is a wonderful expanding and welcoming community with services including: a fantastic Hospital/Medical Centre, Pharmacy, District School (Kinder to Year 12); IGA Supermarket, RSL Club, Bowls Club, Golf Course, Callington Mill Distillery, boat ramp, many specialty shops, great cafes and more...

Located in the heart of Tasmania and around 1 hour and 15 minutes from Launceston it really is a central convenient location. With so much new development and new businesses underway in the community, properties like this do not come up all that often and this versatile property is ready for it's next chapter. Call Racquel now to avoid missing out!

3 BED | 1 BATH | 1 CAR

PRICE:

offers over \$600,000

OPEN FOR INSPECTION:

N/A

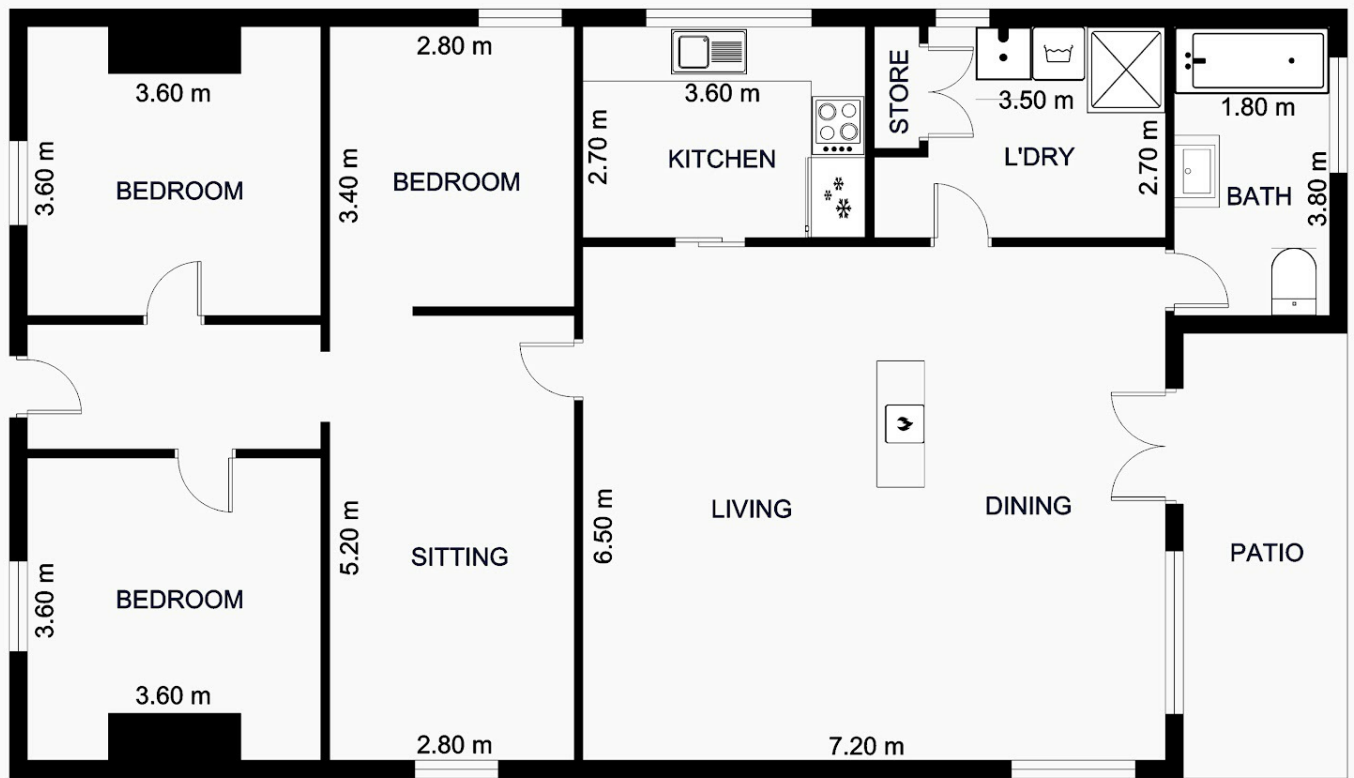


Racquel Cleaver

0497864680

racquel@atrealty.com.au

www.atrealty.com.au



18 High Street, Oatlands

Total approx. floor area: 132m²

Areas and dimensions are approximate and therefore this floor plan should only be used for illustrative purposes.

Real Estate Marketing by nextcreative.com.au



Disclaimer: Please note this floor plan is for marketing purposes and is to be used as a guide only. All dimensions are estimates only and may not be exact measurements.