



SOLD

EXQUISITE SANDSTONE COUNTRY HOME ON 32 ACRES WITH AN OPTION TO SELL 27 ACRES

Rarely does an opportunity to secure something of this nature present itself to the property market. This stunning property is set on approximately 32 acres, with an option to sell up to 27 acres to an adjoining neighbour. 2km from the quaint township of Yahl offering a primary school, cricket club and community hall and only a short drive to Mount Gambier. There is a school bus 800m from the front gate which services the high schools.

Entering the property, you are taken away by the beautiful country homestead charm that the home has to offer, with features such as bullnose veranda's, sandstone front and exquisite hand-hewn sandstone walls. The original home was built circa 1900, with a sympathetic extension by the current owners.

A well lit home which is brilliantly positioned with living areas facing north east to maximise on natural light, winter sun, and afternoon shade in summer.

Inside the home you are greeted with amazing jarrah hard wood floors and high ceilings which have been carried throughout the home. At the front of the home is a lounge with a lovely cosy feel and feature fireplace as well as the Master suite, including a fireplace. The master suite has a walk-in wardrobe and en-suite with vanity, large shower and toilet.

A grand formal dining room with another feature fireplace and stunning French doors opening through to the outside gardens, is a great space for dinner parties.

Through to the main area of the home is a lovely open plan living, dining and kitchen area with a sandstone feature wall completed with slow combustion heating and a stunning outlook. A beautifully light filled kitchen with solid timber cabinetry, central island with granite benchtop, marble tiles, dishwasher, stainless steel appliances and walk-in pantry. The informal dining area opens to a private outdoor entertaining space.

Submerge yourself in the ultimate luxury and unwind in the 3 person deep bath while viewing the garden through a massive window designed for just that. Included in the luxurious main bathroom is a powder room with huge linen press and generous sized vanity bench with storage.

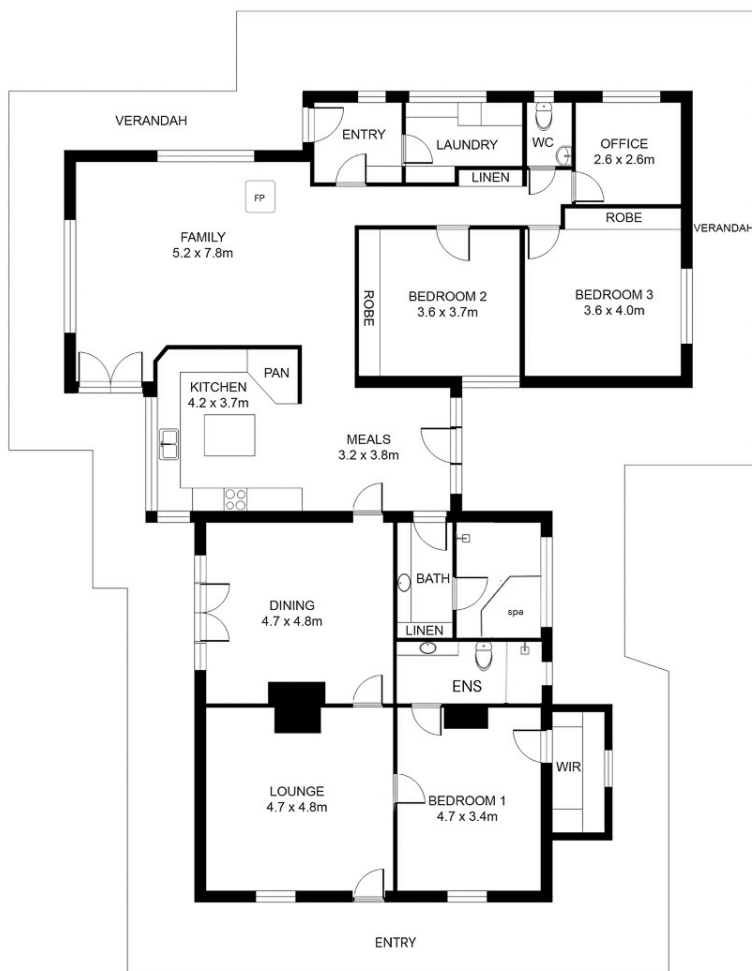
4 BED | 2 BATH | 0 CAR

PRICE:
\$1,000,000

OPEN FOR INSPECTION:
N/A



Peter Dempsey
0418854393
peterdempsey@atrealty.com.au
peterdempseyatrealty.com
RLA: 269823



Disclaimer: Floor Plan measurements are approximate and are for illustrative purposes only. While we do not doubt the floor plans accuracy, we make no guarantee, warranty or representation as to the accuracy and completeness of the floor plan

Disclaimer: Please note this floor plan is for marketing purposes and is to be used as a guide only. All dimensions are estimates only and may not be exact measurements.