


FOR SALE

4  | 1  | 2 

11 DAVENPORT ROAD, PALMER, SA, 5237

ANSELL
Real Estate



ICONIC PALMER ACREAGE CLOSE TO EVERYTHING

The iconic Palmer hill has been a landmark property for decades and now it is time for new owners. A fantastic opportunity to obtain a rare lifestyle providing space, views, potential and a pub just walking distance away.

Set across 2 titles this iconic 15 acre (approx) property lends itself to those looking for an established home with room to move but without compromising on convenience or perhaps it's the ultimate new home site? If stunning views are what you are after then look no further.

What we love about this property:

- Room to move on the 15 acre approx land holding just walking distance to all the amenities the township has to offer.
- 4 bedrooms
- Shedding plus oversized carport
- Solar
- Mains water and mains power
- Ample rainwater storage
- Incredible views and suitable new home sites for those looking to build
- Just 15 minutes to Mannum or 25 minutes to Murray Bridge

Quality acreage property in this price point are becoming rare.

PRICE:
Contact Callum




OPEN FOR INSPECTION:
N/A

Callum Ansell // 0468671665

callum@ansellrealestate.com.au // www.ansellrealestate.com.au // RLA 305012



FOR SALE

4  | 1  | 2 

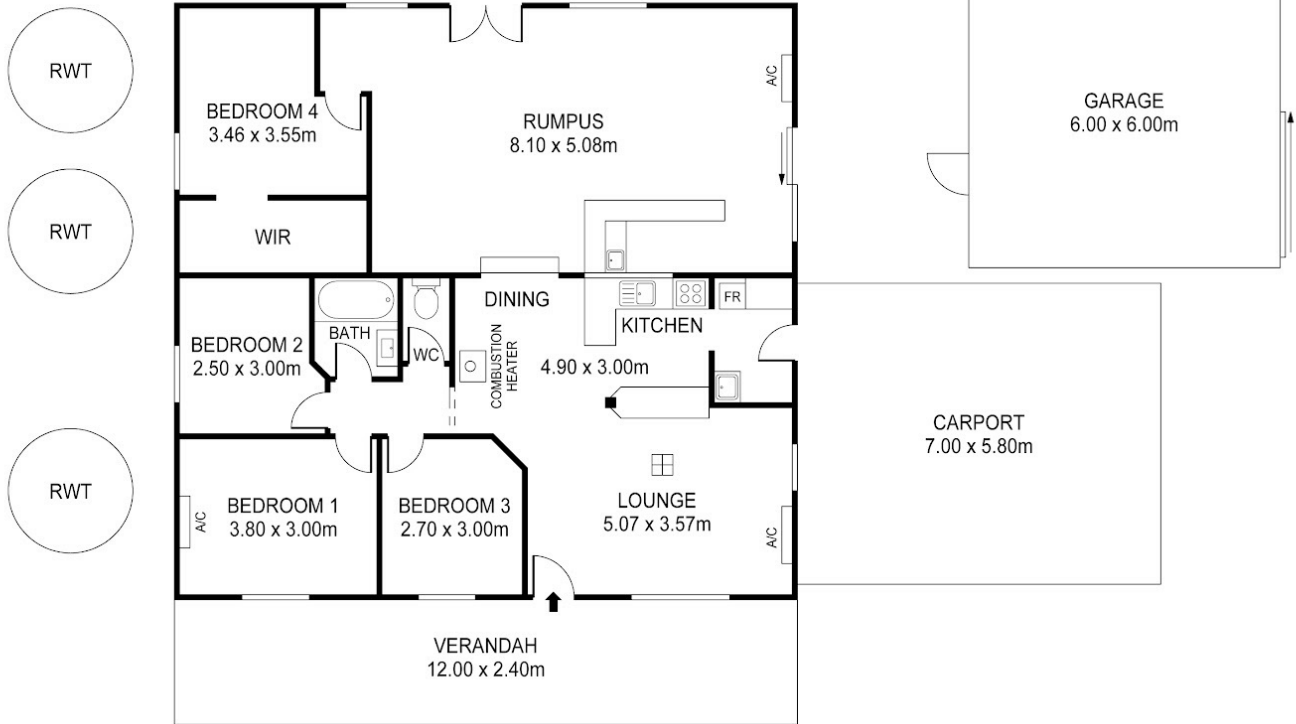
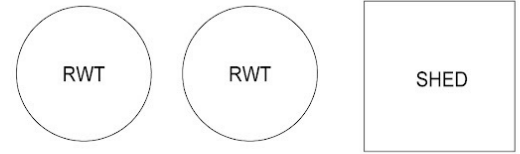
ANSELL
Real Estate



11 DAVENPORT ROAD, PALMER, SA, 5237

APPROXIMATE AREAS

LIVING	133 Sq M
CARPORT	41 Sq M
GARAGE	36 Sq M
VERANDAH	29 Sq M
TOTAL	239 Sq M



11 DAVENPORT ROAD, PALMER



Callum Ansell // 0468671665

callum@ansellrealestate.com.au // www.ansellrealestate.com.au // RLA 305012