

SOLD

SOLD IN 1 HOME OPEN AGAIN BY NANCY BIRD @REALTY

SOLD in 1 HOME OPEN AGAIN BY NANCY BIRD @realty

Nancy Bird is proud to present this gorgeous home that offers the perfect blend of old-world elegance and modern luxury. The whole block approximately 1012 sqm R20/R40 zoned and is fully fenced, creating a cosy and private ambience from the moment you step through the gate and into the paved motor court, shaded by a soaring pretty Jacaranda tree.

A front porch provides a warm welcome as you enter this light-filled and updated abode with gorgeous Jarrah timber flooring underfoot and ornate ceiling details overhead. Set to one side are a guest bedroom and the main bathroom and to the other side, the owner's suite awaits. A large window overlooks the porch and there is an original beautiful fireplace for a touch of vintage charm.

A door opens into the kitchen and dining area where the budding chef will delight in the culinary offering. The original wood stove is on show, set alongside a contemporary stainless steel oven and cooktop. Ample storage runs down one side of the room and there is plenty of prep space and even room for a dining setting.

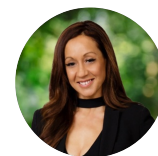
When it's time to relax, a gorgeous living room awaits with lots of lovely natural light and French doors that open out to the abundantly sized, sweeping covered bullnose verandah with timber decking and ceiling fans. Whether you're relaxing with a coffee in hand or you're gathering with friends and family, this is sure to be a favourite place to make special celebration memories or as you spend your downtime as you overlook the gardens. You will be pleasantly surprised how you will feel a million miles away from it all, as you walk through this beautiful loved property, located on this 1012 sqm green titled block in the heart of Bassendean.

A second rear patio offers even more outdoor living space and there is also two sheds set at the rear of the block and side double gated access, perfect for storing a boat, car or trailer. For the savvy buyer with an eye for potential, this property is zoned R20/R40 allowing for future development potential (STCA) You could choose sub divide to keep the gorgeous home and build on the rear or build multi dwellings on approximately 220 sqm lots (authorised by the Council City of Bassendean); the choice is all yours.

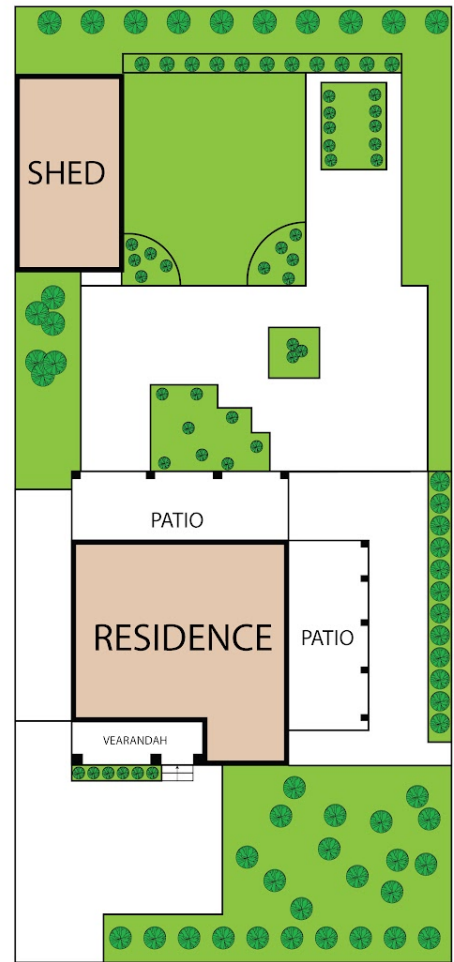
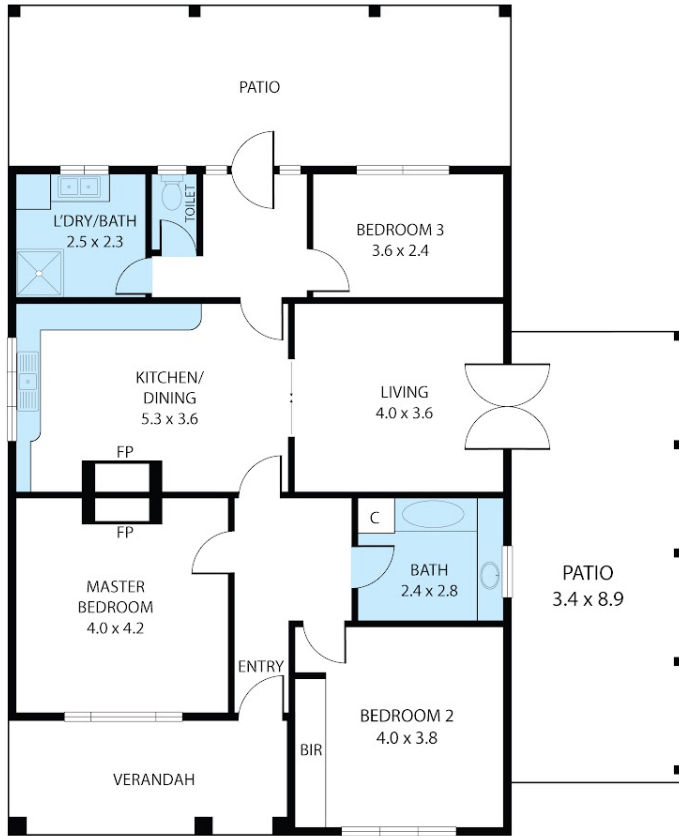
3 BED | 2 BATH | 2 CAR

PRICE:
\$715,000

OPEN FOR INSPECTION:
N/A



Nancy Bird
0415558594
nancybird@atrealty.com.au
www.atrealty.com.au



13 Lord Street, Bassendean 6054

TOTAL APPROX. FLOOR AREA 105 SQ.M

Whilst every attempt has been made to ensure the accuracy of the floor plan contained here, measurements of doors, windows, rooms and any other items are approximate and no responsibility is taken for any error, omission, or misstatement. This plan is for illustrative purposes only and should be used as such by any prospective purchaser.

Disclaimer: Please note this floor plan is for marketing purposes and is to be used as a guide only. All dimensions are estimates only and may not be exact measurements.