

SOLD

COUNTRY LIVING AT ITS VERY BEST !!

This beautifully presented 4 bedroom timber home is not one to be missed. Situated on the edge of Pittsworth on a large 1319m² block, it is within a short 5-10 minute walk to local primary schools and shops. The town of Pittsworth is located in the heart of the Darling Downs in a rural community, surrounded by various agricultural industries. It is approximately 40km west of Toowoomba with a daily bus run that travels to schools and shopping centres. The town is within a 2-3 hour drive to Brisbane, the Sunshine Coast and the Gold Coast.

This home feels light and fresh through-out and polished timber floors add a touch of class and practicality. This attractive and very low maintenance home boasts four bedrooms all with built-ins and ceiling fans, an open plan dining and living area with a wood fire place to keep you cosy in the cooler months, and a reverse cycle air conditioner. The kitchen has ample storage and bench space, a wall oven and cooktop. The bathroom is well presented featuring a separate shower and bathtub with a tiled floor. If you enjoy entertaining you will love the verandah at the rear of the house overlooking the lovely back yard which has side access. In addition, there are two rainwater tanks which you can switch from town to tank water when required and a 6.6kw solar system with 20 solar panels. There is a double lock up colorbond garage that has electricity connected and a double carport at the front of the garage with a garden shed in the back yard for extra storage.

Features include:

- Garden shed
- Gas hot water
- Separate Laundry
- 6.6kw solar system
- Two Rainwater tanks
- Reverse cycle air conditioner
- Wood fireplace in the living area
- Verandah on the front and back of the home
- Main bathroom with separate bathtub and shower
- Two Car colorbond garage with electricity connected
- Modern kitchen with wall oven, cooktop and dishwasher
- 4 generous bedrooms with built-in wardrobes and ceiling fans

This home is ready to be lived in with no work to be done. If you are looking for a modern

4 BED | 1 BATH | 2 CAR

PRICE:
\$399,000

OPEN FOR INSPECTION:
N/A



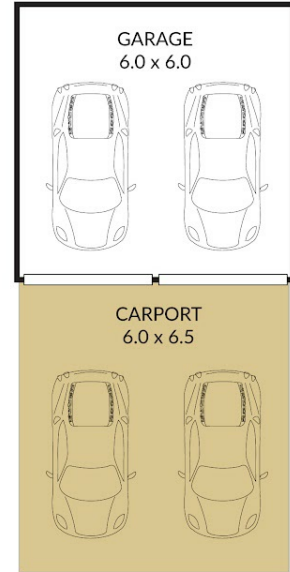
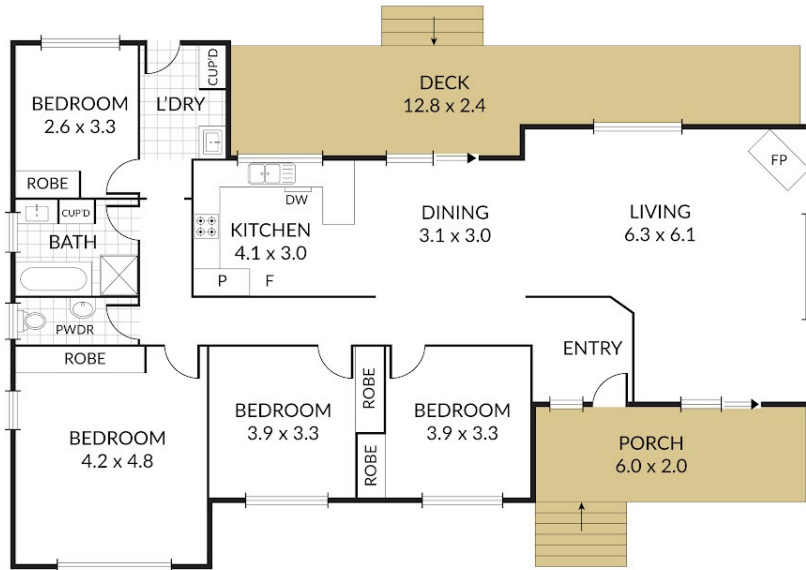
Robert Cox
0422841777
robertcox@atrealty.com.au
Tyme Real Estate

Internal 135m² External 122m² Total 257m²

5 Tyson Street, **Pittsworth**



4 x 1 x 4 x



NOTE: Every precaution has been taken to verify the accuracy of the above details. However, prospective purchasers are advised to make their own enquiries.

Disclaimer: Please note this floor plan is for marketing purposes and is to be used as a guide only. All dimensions are estimates only and may not be exact measurements.

Robert Cox
0422841777
robertcox@atrealty.com.au
Tyme Real Estate

