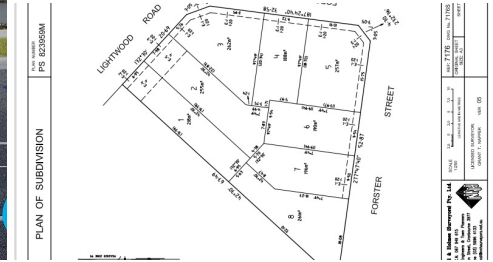


6/122-123 LIGHTWOOD ROAD, NOBLE PARK, VIC, 3174



**SOLD**

**SOLD SOLD SOLD \$690,000 BY VIET HA 0406 246 384**

LAST CHANCE FOR STAMP DUTY SAVINGS, MUST BUY TODAY

If you are looking at owning in Noble Park, an opportunity for first home buyers, down-sizers and investors, individually designed townhouses with open living floor plans, entry hallway and high ceiling some with studies, there is simply no other place more convenient, central, edgy and luxury townhouse. Introducing an ultra-modern lifestyle, this triple storey development site providing spaces, luxury and flexibility in the heart of Noble Park is offering a touch of class, with exquisite style contemporary townhouses which are off the plan. Modern, contemporary designed double – storey townhouse that has been carefully planned to ensure an easy living lifestyle.

- Spacious kitchen with walk-in pantry, laminated kitchen cabinets with stone bench tops and stainless steel, ceramic tiled splashbacks appliances overlooking the dining area.
- Perfect living environment with combined dining and living area and downstairs toilet/power room for convenience.
- Upstairs is master bedroom complete with EnSite and a huge WIR. Two additional bedrooms with BIR and main bathroom with shower and bath with separate/powder room
- With luxury fittings and features, carpets in main living areas, bedrooms, passage way, Quality tiled floor to kitchen, bathroom, laundry and wet areas
- Internal access to garage, concrete driveway, path to front door, instant lawn to front and rear garden

Save on stamp duty and FHOG, this is a fantastic opportunity to grow your family or upgrade your standard of living. Comprising of eight townhouses with striking external façades and gorgeous interior craftsmanship. With a focus on a high standard, natural light. Low maintenance living and intelligent with landscaping and plants.

Property features include:

- Timber floor boards
- Separate laundry
- Ground floor 2.55 high ceiling

**3 BED | 2 BATH | 1 CAR**

PRICE:  
**\$690,000**

OPEN FOR INSPECTION:  
N/A



**Viet Ha**  
**0406246384**  
viet@vietha.com.au  
vietha.com.au



Disclaimer: Please note this floor plan is for marketing purposes and is to be used as a guide only. All dimensions are estimates only and may not be exact measurements.