

118 EAGLEVIEW ROAD, MINTO, NSW, 2566



SOLD

A GRAND CUSTOM BUILT MASTERPIECE IN MINTO

This grand custom built residence has been brilliantly designed with sophistication and class in mind. The innovative interiors create an ambiance of ultimate tranquility along with a superior and convenient lifestyle to match. Spread over a two story floorplan, this sleek architectural sanctuary of cutting edge style features impeccably appointed inclusions and finishes that have been thoughtfully hand picked and tastefully designed by the home's current owner.

Features Include:

- Double entry doors lead to a wide open foyer with vibrant interiors
- Multiple living quarters all perfectly positioned throughout the home
- Five generously proportioned bedrooms downstairs with built in robes to four
- 5th bedroom is perfect for a home office
- Expansive Master bedroom upstairs includes a walk-in closet, ensuite with freestanding bathtub and access to a private sitting area with a balcony
- Multiple formal & informal living quarters spread throughout the home
- Formal dining room
- Sleek and modern gourmet kitchen with detailed fixtures and finishes
- Camouflaged Dishwasher
- Soft closing cupboards and drawers
- Quality appliances with gas cooking
- Spacious butlers pantry
- Stone benchtops
- Island with breakfast bar
- Four Beautifully designed bright & airy bathrooms, all conveniently positioned throughout the home
- Multiple entertaining points including the veranda upstairs that overlooks the expansive yard & the downstairs poolside alfresco
- Built in Kitchenette
- Stunning resort style swimming pool equipped with a waterfall feature
- Alarm system
- Ducted air conditioning
- Electric front gate with intercom
- Two separate garages that is equipped to house up to 10 cars with remote & internal access

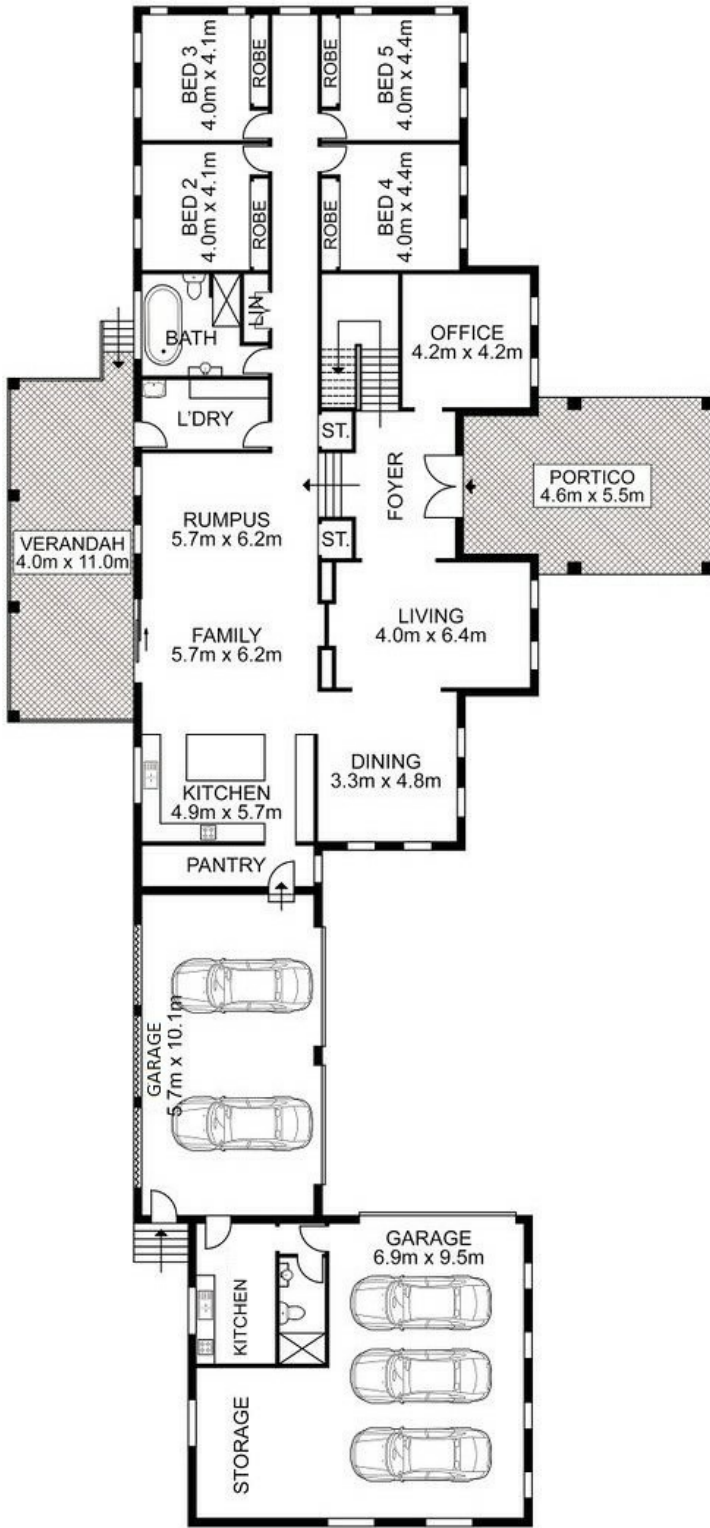
6 BED | 4 BATH | 10 CAR

PRICE:
\$3,200,000

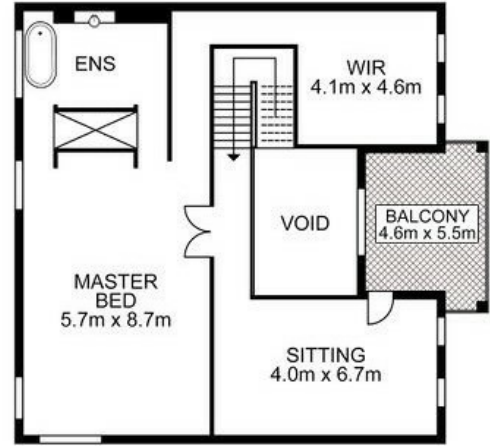
OPEN FOR INSPECTION:
N/A



Huss Al Salemi
0411699419
huss@atrealty.com.au
www.agencycentral.com.au



ENTRY LEVEL



UPPER LEVEL

