



SOLD

UNDER CONTRACT

Welcome to Orchard Rise an exclusive boutique development of 16 high end free standing residences. Built by one of Darwin's most awarded local builders featuring sophisticated style these modern family homes are sure to cater for the most discerning buyers. No expense has been spared on this beautifully presented quality home, giving you a luxurious low maintenance lifestyle which creates more time for your ever busy life to enjoy the small pleasures whether it be relaxing in your private court yard listening to native birds singing, swimming in your ambient spa pool, or leisurely walks to the vibrant markets of Nightcliff. This unique residence is securely located in the rear corner and is the largest property in the complex and has too many features to mention, it truly is a must see!

Contemporary meets comfort in this stunning expression of form, function and durability. Distinct living areas fit together flawlessly, providing a flexible layout that will just as easily accommodate quite family living as it will entertaining in style.

The kitchen and dining spaces are completely open to each other an ideal gathering point for family and friends. Extending out, it opens to a large outdoor entertaining and pool area set amongst established tropical gardens. This villa has dual yard access around the rear and side, accessible by secure gates.

Enjoy the convenience of watching the children splash in the pool while preparing meals in the sleek well-appointed kitchen. Wrapped in stone benches, premium tiled floors and a full range of quality stainless steel appliances, this gourmet space is sure to impress. The security mesh screens throughout add to the secure and safe feeling of your sanctuary.

This convenient and ultra private home further enhances its appeal. Beyond this cocoon of luxury are all the attractions of the Nightcliff area including foreshore walks, popular outdoor markets, shopping precinct, a host of shops & schools nearby, major bus lines at your doorstep or hop in the car as Darwin's CBD is a mere 5 minute drive.

This home has it all come and see for yourself!

A rare offering indeed Orchard Rise offers a privileged lifestyle today and the promise of a blue-chip investment for the future.

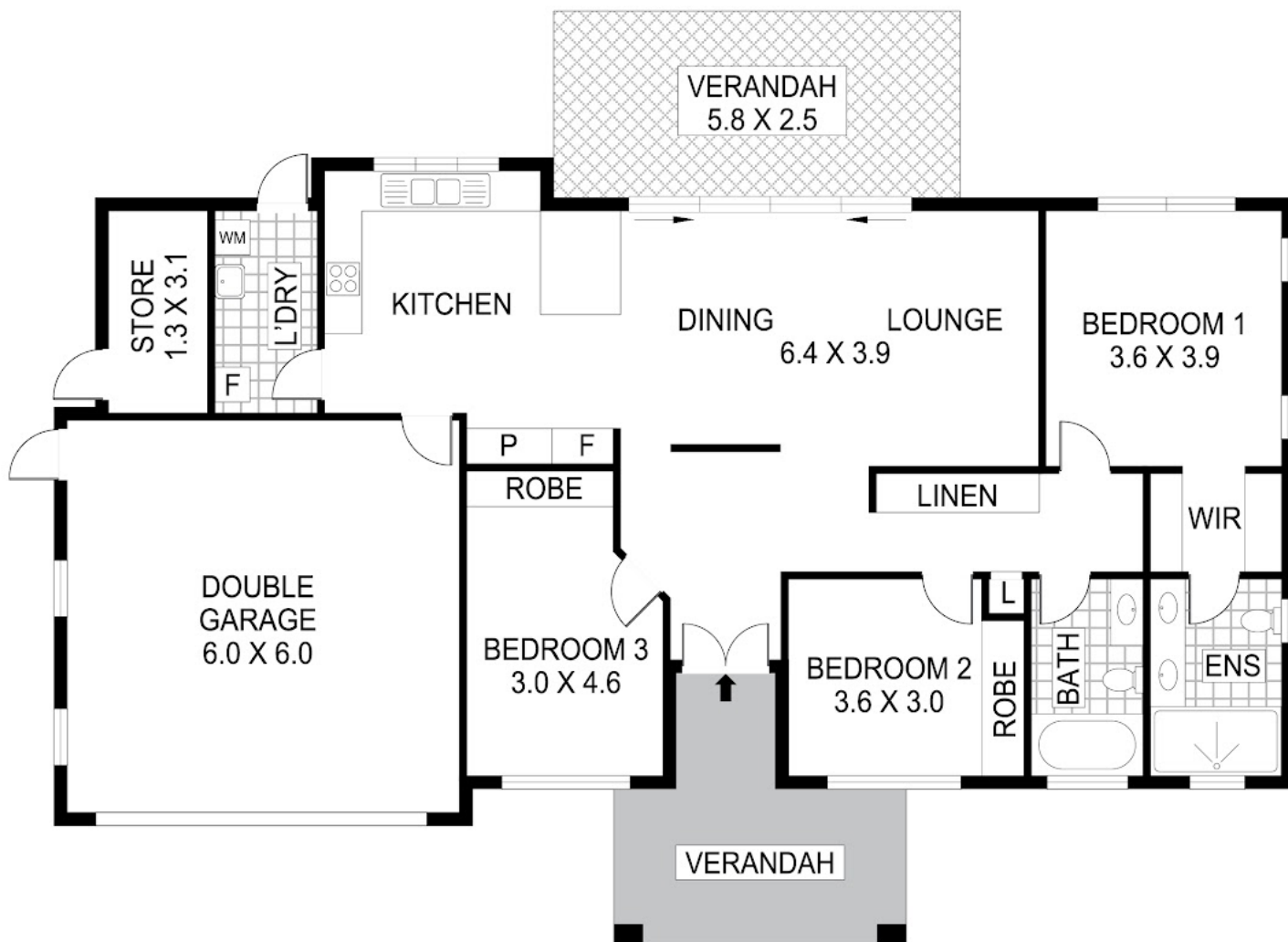
3 BED | 2 BATH | 2 CAR

PRICE:
\$765,000

OPEN FOR INSPECTION:
N/A



Nicole Wheeler
0417508800
nicolewheeler@atrealty.com.au
www.atrealty.com.au



Disclaimer: Please note this floor plan is for marketing purposes and is to be used as a guide only. All dimensions are estimates only and may not be exact measurements.

Scale in metres. Indicative only. Dimensions are approximate. All information contained herein is gathered from sources we believe to be reliable. However we cannot guarantee its accuracy and interested persons should rely on their own enquiries

5/125 Dick Ward Drive Fannie Bay NT 0820

0417508800

nicolewheeler@atrealty.com.au

www.atrealty.com.au

