

@realty

SOLD

GORGEOUS FAMILY HOME IN BEACHSIDE LOCATION

This character filled, four-bedroom, two-bathroom large family home is set on a 609sqm block, with double gated side access. Presenting an ideal opportunity for the first home buyer, growing family or investor. Located within walking distance to Secret Harbour Primary School and the Secret Harbour shopping centre with local eateries, plus just a short drive to the Secret Harbour Beach and Golf Course, this home is ideally positioned in the heart of Secret Harbour.

Accommodation briefly comprises:

- * Double door entry into welcoming hallway
- * Spacious master bedroom suite with huge walk in robe and en-suite with shower, corner bath and separate WC
- * Separate theatre room with double doors, brand new carpet and raised platform for a movie theatre experience
- * Gorgeous, light filled, open plan casual living area with stunning solid timber flooring, comprising meals and family areas
- * Very spacious kitchen with heaps of storage, lots of bench space, stainless steel appliances, large walk in pantry, direct access to a practical laundry with potential to create your own scullery & shoppers entry
- * Great sized dedicated study/home office, perfect for those working from home
- * 3 further queen sized minor bedrooms with ample storage, serviced by practical family bathroom and separate WC

The property also benefits from:

- * Ducted and zoned reverse cycle air-conditioning & gas hot water system
- * Security flyscreen's to front door
- * Tasmanian Oak flooring to all the living areas, skirting boards
- * High ceilings throughout, coupled with large open windows add to the natural light and homely warmth the property exudes.
- * Large outdoor patio area overlooks the grassed yard. Summer BBQ's and family gatherings will be a breeze with this practical layout.
- * Low maintenance bore reticulated gardens, garden shed
- * Double gated side access is ideal for the boat / caravan or trailer.
- * Double remote garage with shoppers entry

4 BED | 2 BATH | 6 CAR

PRICE:
\$500,000

OPEN FOR INSPECTION:
N/A



Lisa Drylie
0433048512

lisadrylie@atrealty.com.au

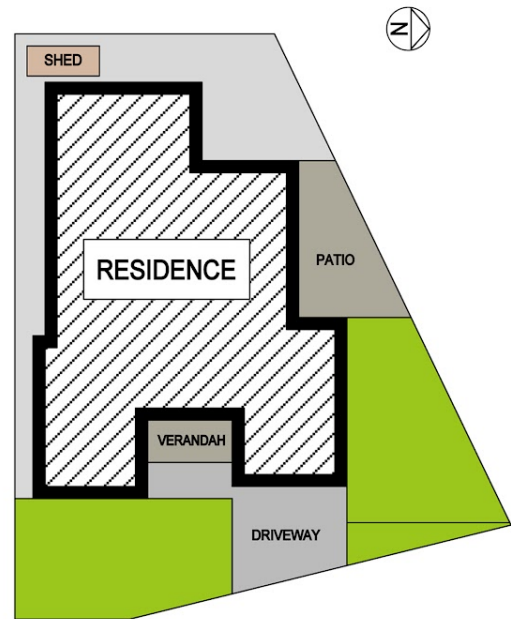
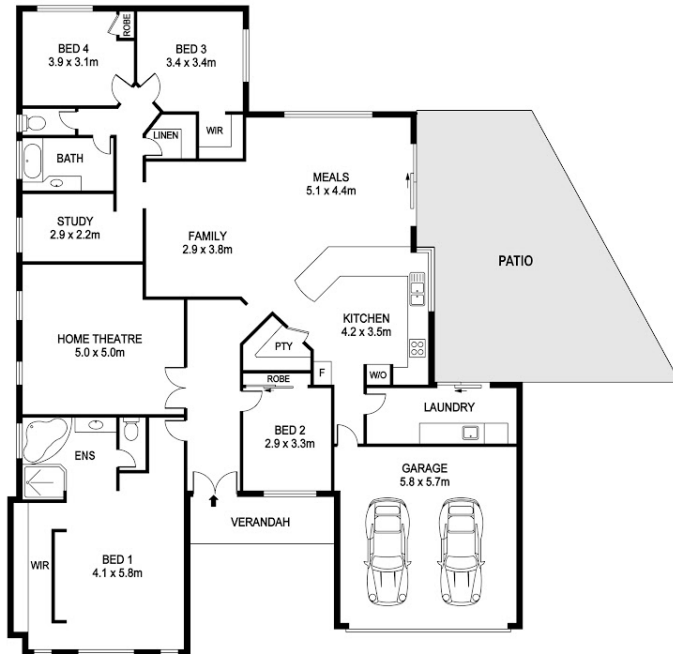
www.lisadrylierealestate.com

67 La Spezia Drive SCERET HARBOUR

Block Size 609m² | 4 Bedrooms | 2 Bathrooms | 2 Car

Lisa Drylie | 0433 048 512

Total approx 273m² + patio



REAL ESTATE FLOOR PLANS | houseguru.com.au

Whilst every attempt has been made to ensure the accuracy of the floor plan contained here, measurements of doors, windows, rooms and any other items are approximate and no responsibility is taken for error, omission or mis-statement. This plan is for illustrative purposes only and should only be used as such by any prospective purchaser. The services systems and appliances shown have not been tested and no guarantee as to their operability or efficiency can be given.

Disclaimer: Please note this floor plan is for marketing purposes and is to be used as a guide only. All dimensions are estimates only and may not be exact measurements.