



SOLD

WHATS BEHIND THE PICKET FENCE - A HOME WITH NOTHING MORE TO BE DONE - JUST BACK IN THE REMOVALISTS TRUCK !

- * Superior home - fully renovated including the Gardens
- * New Floor coverings
- * New Stove
- * New Airconditioners
- * New Internal paint and external clean and paint
- * New Gardens with watering system
- * New Fencing
- * New Doors
- * New Vanity and Shower
- * New Window treatments

Ready to MOVE IN TODAY ! If your tired of looking at renovation homes this is just the Ticket.. just back up the truck and start enjoying this sensational home

- * Low set at the front , Highset at the Back giving the rear balcony views and breezes
- * 3 good Sized bedrooms with new Day / Night blinds
- * Large Lounge and Dining room
- * Big kitchen lots of bench space, big windows
- * Renovated Bathroom with Shower , vanity and toilet
- * Under the home you will find :- Single lock up garage , Laundry and a super sized space with concrete floor for Storage ? Workshop? Kids space? Craft Room ? the uses are endless with power and windows for light and airflow.

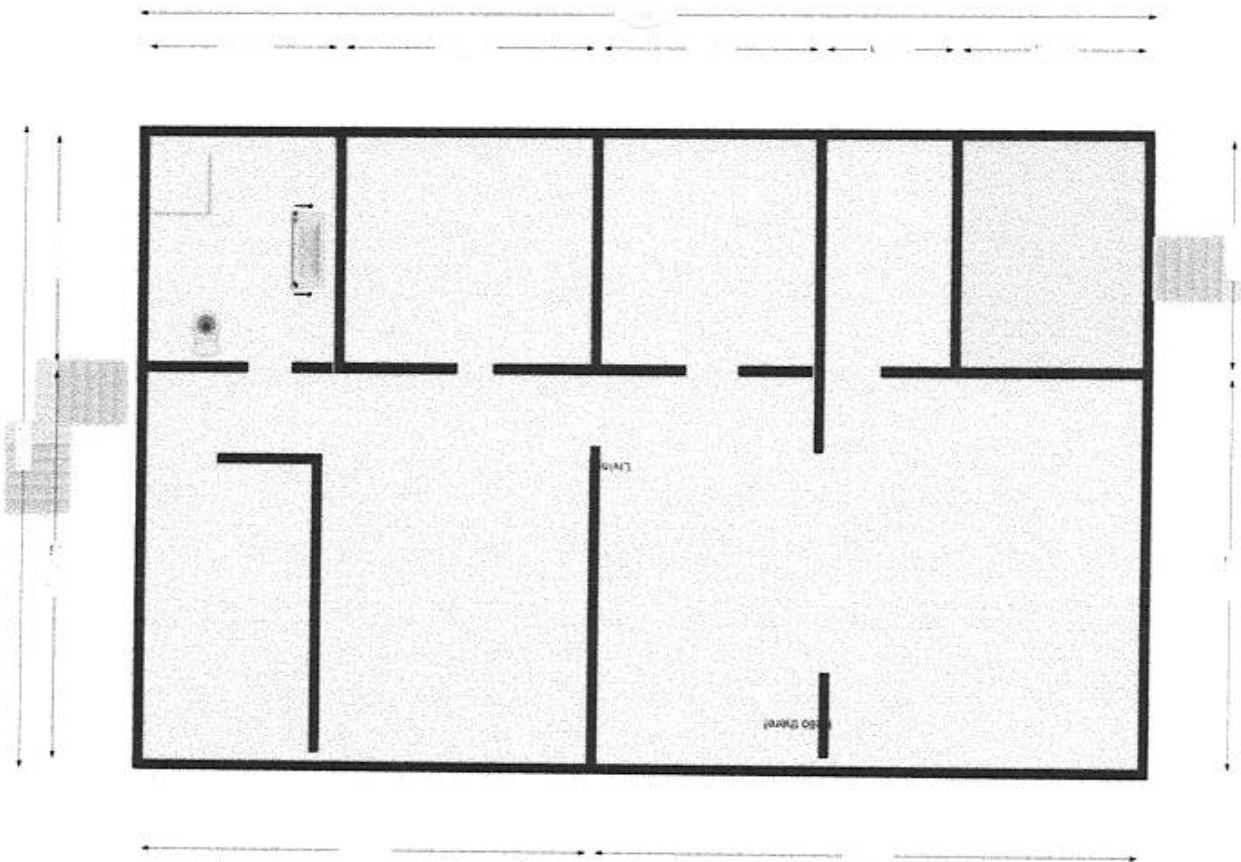
3 BED | 1 BATH | 1 CAR

PRICE:
\$355,000

OPEN FOR INSPECTION:
N/A



Lyn Sills
0402500825
lynsills@atrealty.com.au
eskrealestate.com.au



Disclaimer: Please note this floor plan is for marketing purposes and is to be used as a guide only. All dimensions are estimates only and may not be exact measurements.