



SOLD

LIVE ULTIMATE SEMI RURAL FAMILY LIFESTYLE ON A 978SQM BLOCK

This home's superb setting is impressive to say the least. Personally designed with meticulously thought out renovations that cater to family living. The location is enviable with it's semi rural lifestyle accompanied with a growth plan that will excite any astute buyer looking to settle down and raise a family. The home's expansive floor plan has been designed to encompass comfort and practicality with its use of space being cleverly maximised to ensure a high standard of quality living is achieved. The recent renovations have added a stylish and modern touch to this already charming family abode.

Features Include:

- Five generously proportioned bedrooms equipped with built in robes
- The master suite includes dual walk through robes that lead to the ensuite that has recently been fully renovated
- Expansive open plan living & dining room
- Combustion fireplace
- Spacious rumpus / games room with backyard access
- Home office
- Renovated kitchen is equipped with ample cupboard & bench space
- Timber bench tops
- Stainless steel appliances including a dishwasher
- Stylish black tapware
- Gas cooking
- Walk in pantry
- Large island breakfast bar
- Renovated main bathroom equipped with a deep luxurious freestanding bathtub
- Both bathrooms have been fully renovated & include floating vanities, Frameless shower screens, waterfall showerheads & featured tiling
- Laundry includes built in cupboards
- Internal storage / linen space throughout
- Split system air conditioning
- Ceiling fans throughout
- Gas fittings
- Undercover alfresco entertaining with tiles & a ceiling fan

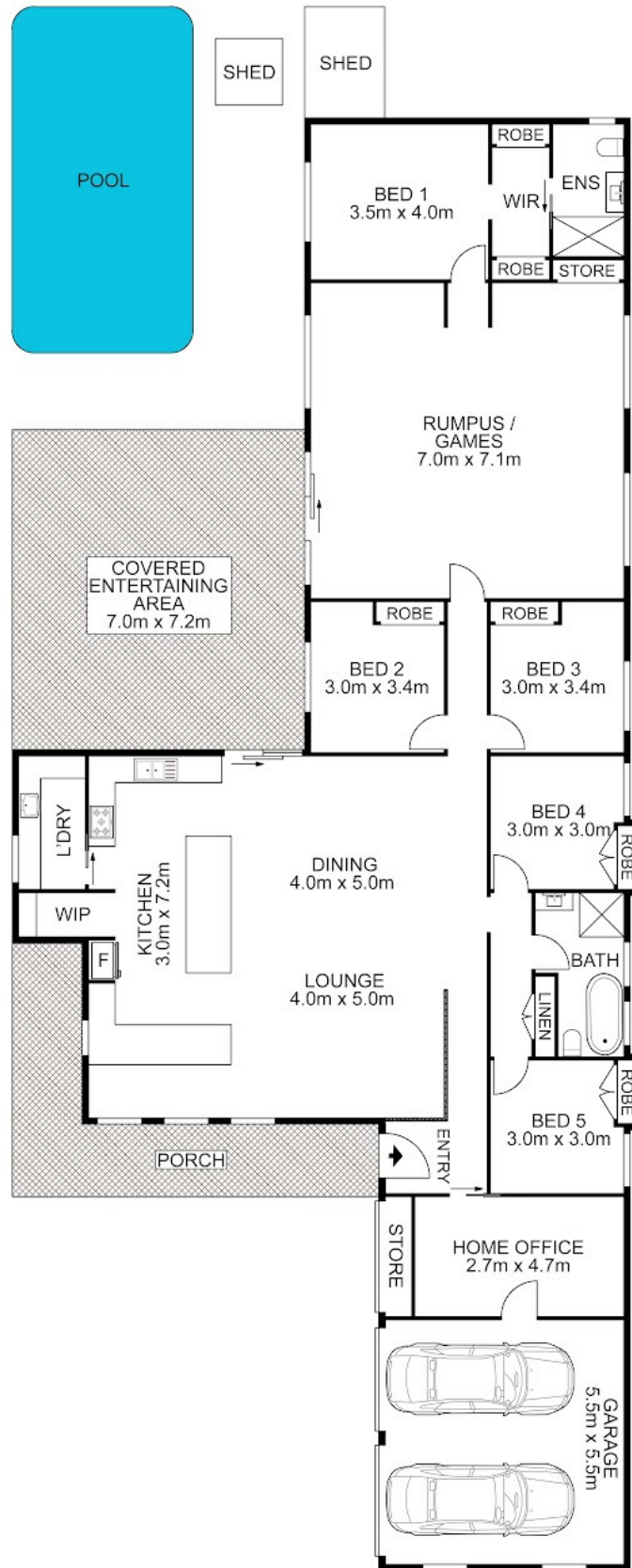
5 BED | 2 BATH | 2 CAR

PRICE:
\$1,130,500

OPEN FOR INSPECTION:
N/A



Bobby Reynolds
0432173566
bobby.reynolds@atrealty.com.au
agencycentralwilton.com.au



 AGENCY

Disclaimer: Please note this floor plan is for marketing purposes and is to be used as a guide only. All dimensions are estimates only and may not be exact measurements.

17 Broughton Street, Wilton

Bobby Reynolds All measurements are approximate • Drawn for marketing purposes only

0432173566

bobby.reynolds@atrealty.com.au

agencycentralwilton.com.au

