

SOLD

PREMIUM LOCATION

PREMIUM LOCATION

As soon as you enter this top floor apartment you will be impressed with the superb natural light throughout. This is an opportunity to secure this tidy easy care apartment situated within a small residential complex which is perfectly positioned and provides easy access to Mascot Village, L'Estrange Park, and is only moments away from express city transport services. This apartment is an excellent first home or investment.

- Well presented formal living area
- Bright generous size eat-in kitchen
- Two good-sized bedrooms
- Internal laundry
- Only 2 units per floor
- Total privacy not overlooked
- 12 units in complex
- Car space

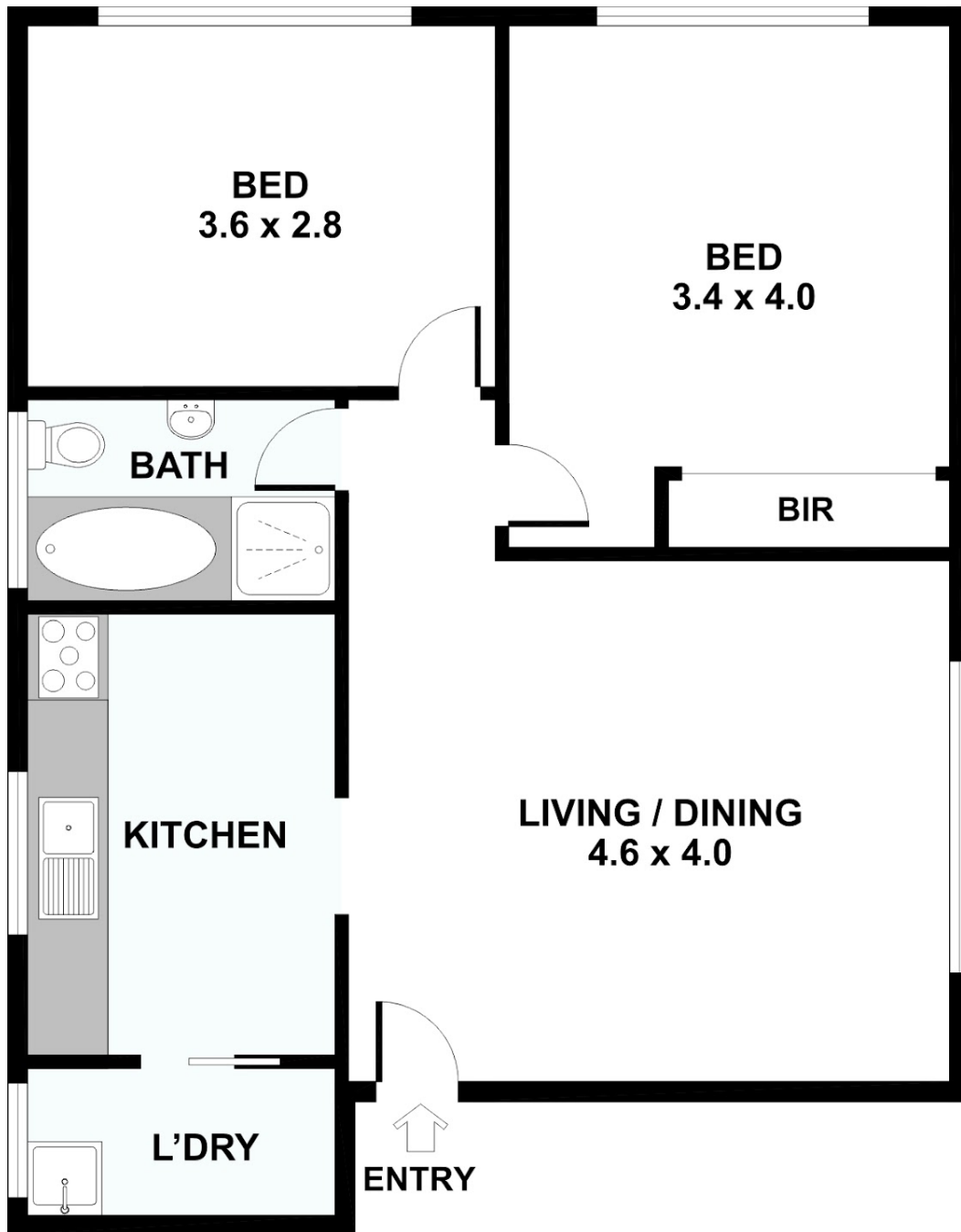
2 BED | 1 BATH | 1 CAR

PRICE:
\$650,000

OPEN FOR INSPECTION:
N/A



Tony Mahon
0438273971
tony.mahon@atrealty.com.au
www.atrealty.com.au



Disclaimer: Please note this floor plan is for marketing purposes and is to be used as a guide only. All dimensions are estimates only and may not be exact measurements.