

FOR LEASE

MODERN LIVING - NEW ESTATE!

This modern and stylish 2 bedroom substantial villa/duplex enjoys a premier setting in one of Brierley Hills finest blue ribbon streets. Beautifully appointed offering suburb indoor & outdoor living and a high level of attention to detail, this near brand-new duplex provides an easy-care lifestyle without compromising on luxury and style. This near brand new and ready to move in, an exciting opportunity presents itself low maintenance level open plan living. Featuring gas stainless steel appliances, gas hot water and a single lock up garage + one additional off street open car space. Air conditioning to the living which flows onto a covered outdoor alfresco dining and north facing fully fenced grassed courtyard. SORRY NO PETS.

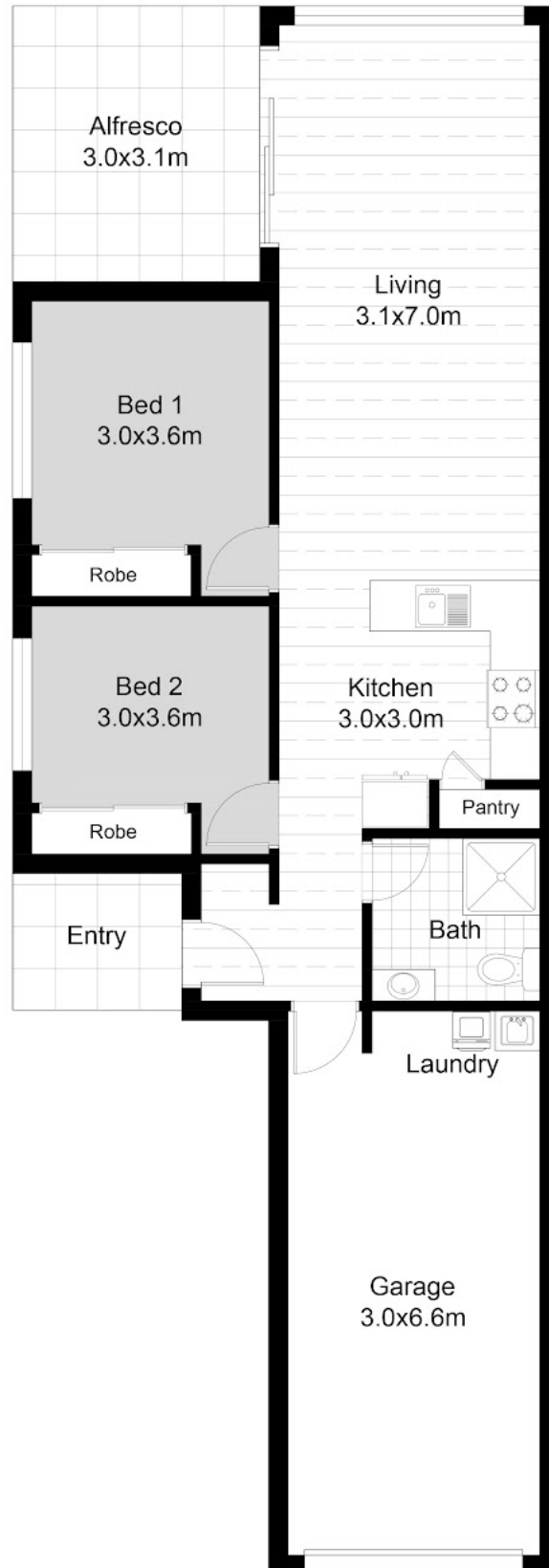
2 BED | 1 BATH | 2 CAR

PRICE:
\$450 per week

OPEN FOR INSPECTION:
N/A



Mark Clarke
0407600211
mark.clarke@atrealty.com.au
www.atrealty.com.au



Disclaimer: Please note this floor plan is for marketing purposes and is to be used as a guide only. All dimensions are estimates only and may not be exact measurements.

PLANS SHOWN ARE FOR MARKETING PURPOSES ONLY. ALL DIMENSIONS ARE APPROXIMATE AND NOT TO SCALE. THEY ARE SUBJECT TO ERRORS AND INACCURACIES AND NO LIABILITY WILL BE ACCEPTED. INTERESTED PARTIES SHOULD MAKE THEIR OWN INQUIRIES

Mark Clarke
0407600211
mark.clarke@atrealty.com.au
www.atrealty.com.au

Approx Internal Floor Area: 90m²