

@realty



SOLD

THIS HOUSE IS ADORABLE, WHERE THE RAINFOREST MEETS THE EUCALYPT FOREST...

Imagine yourself immersed in this peaceful and quiet abode...
This home is rock solid, it is warm in winter and cool in summer...
Your imagination is all that's left to do here, make this your next chapter in life...

Check out the virtual tour to see yourself in this picture, and then check out the video to see the size and beauty of the land...

Then, Call Vikki on 0472 910 300 to book a viewing to confirm the beauty of this property...

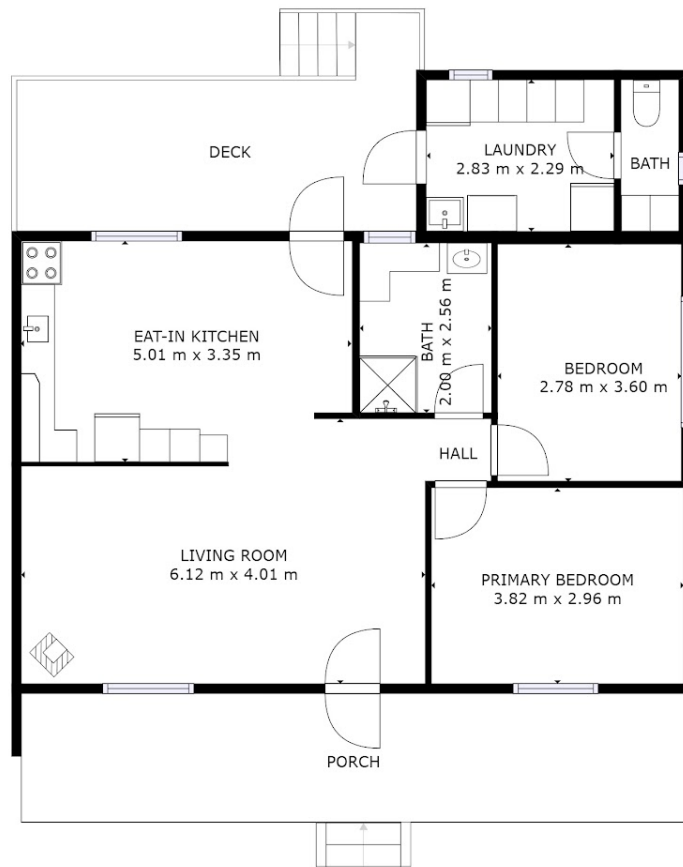
2 BED | 1 BATH | 2 CAR

PRICE:
\$360,000

OPEN FOR INSPECTION:
N/A



Vikki Burnett
0472910300
vikki@atrealty.com.au
www.atrealty.com.au



FLOOR 1

GROSS INTERNAL AREA
FLOOR 1: 76 m², EXCLUDED AREAS:
DECK: 15 m², PORCH: 20 m²
TOTAL: 76 m²
SIZES AND DIMENSIONS ARE APPROXIMATE, ACTUAL MAY VARY.



Disclaimer: Please note this floor plan is for marketing purposes and is to be used as a guide only. All dimensions are estimates only and may not be exact measurements.

Vikki Burnett
0472910300
vikki@atrealty.com.au
www.atrealty.com.au

