

SOLD

UNIQUE, STYLISH AND IMMACULATE FAMILY-FRIENDLY HOME

Live the laid-back lifestyle you've always dreamed of with this unique family home nestled within a prized pocket of Mount Coolum. Immaculately presented and ready for you to enjoy, this charming and character-filled abode is sure to tick every box on your ultimate property wishlist

A quaint and covered wrap-around porch welcomes you to the home and invites you to rest awhile, watch the world go by and admire glorious views of Mount Coolum. From here, you are drawn into the light-filled and inviting layout to explore this remarkable residence for yourself.

A striking timber beamed ceiling flows overhead and combines beautifully with the timber trim, crisp white walls and modern feature lighting.

Reverse cycle split system air-conditioning ensures year-round comfort in the open-plan lounge, dining and kitchen with large windows that frame leafy views over the yard. For those who love to cook, the kitchen is a culinary haven with everything the avid foodie could ever desire. Sweeping benchtops and breakfast bar seating will make preparing meals a joy as will the abundance of storage, quality fixtures and suite of stainless steel appliances.

A glass sliding door opens to create a seamless connection with the large covered entertaining deck where endless hours of fun will be spent this summer. Imagine gathering with guests and dining alfresco as the kids play in the backyard or splash in the pool. This truly is family-friendly living at its very best.

Everyone can spread out and relax with four good-size bedrooms and two impeccably finished bathrooms. An open sitting area is set at the top of the stairs, which could work as a rumpus or teenagers' retreat with direct access to the covered upper-level balcony offering more of those captivating views.

The home's long list of additional features is extensive and includes ceiling fans throughout, ample storage, timber floors, an attached carport and a well-equipped laundry.

All this is set along a private and peaceful street just a short walk from the Mount Coolum Golf Club. The Mount Coolum Shopping Centre and IGA are just minutes from your new home and

4 BED | 2 BATH | 2 CAR

PRICE:
\$1,230,000

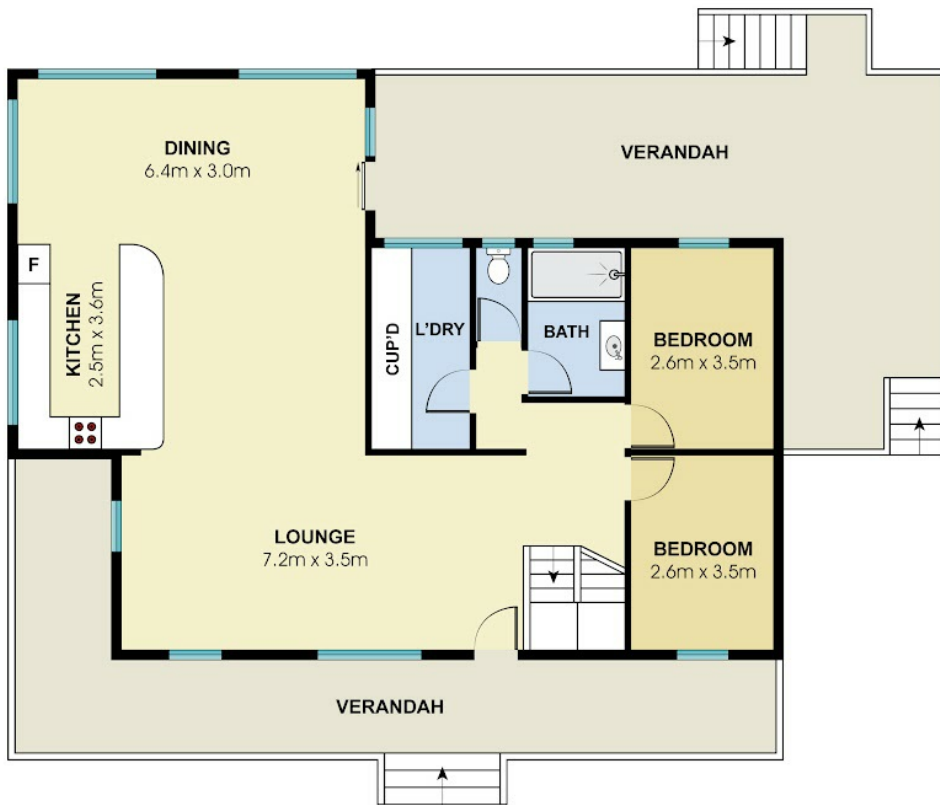
OPEN FOR INSPECTION:
N/A



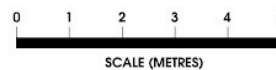
Paula Anderson-Stevens
0431847986
aspex@atrealty.com.au
aspexproperty.com.au



Upper Floor



Lower Floor



| Measurements | |
|--------------|--------------------|
| INT | 210 m ² |
| EXT | 75 m ² |
| Fridge | 1700x1000x600 |

14 Baratook Crescent, Mount Coolum

Scale in metres. Indicative only. Dimensions are approximate. All information contained here in is gathered from sources we believe to be reliable. However we

Disclaimer: Please note this floor plan is for marketing purposes and is to be used as a guide only. All dimensions are estimates only and may not be exact measurements.