



SOLD

A RARE FIND...A LARGE TOWNHOUSE ...WITH A HUGE FRONT AND BACK YARD!

This property backs on the 'Coomera Sports Park' and ideal for a family, first home buyers or investment with delivering strong returns. Situated in a quiet corner of this gated and secure community, this rare find has only one neighbour, and massive yards front and back creating strong capital growth due to the size of the lot.

HIGHLIGHT:

- . Two storey corner lot townhouse
- . Beautifully present and cared for
- . 3 bedroom - 2 bathroom
- . 2 car garage or great workshop
- . Spacious master bedroom with built-ins and ensuite
- . Air conditioned
- . Large living and dining area overlooking the private yard
- . Separate laundry
- . Massive private and level backyard
- . Community pool and spa - Covered BBQ area
- . Backs onto 'Coomera Sports Park'
- . Low Body Corporate \$66 pw approx
- . Gated and secure
- . Car wash bay
- . Onsite manager
- . Pet friendly

GENERAL:

Built in 2004
Rented at \$400 pw til April 2022
Body corporate approx \$3450 pa
Rates approx \$2040 pa

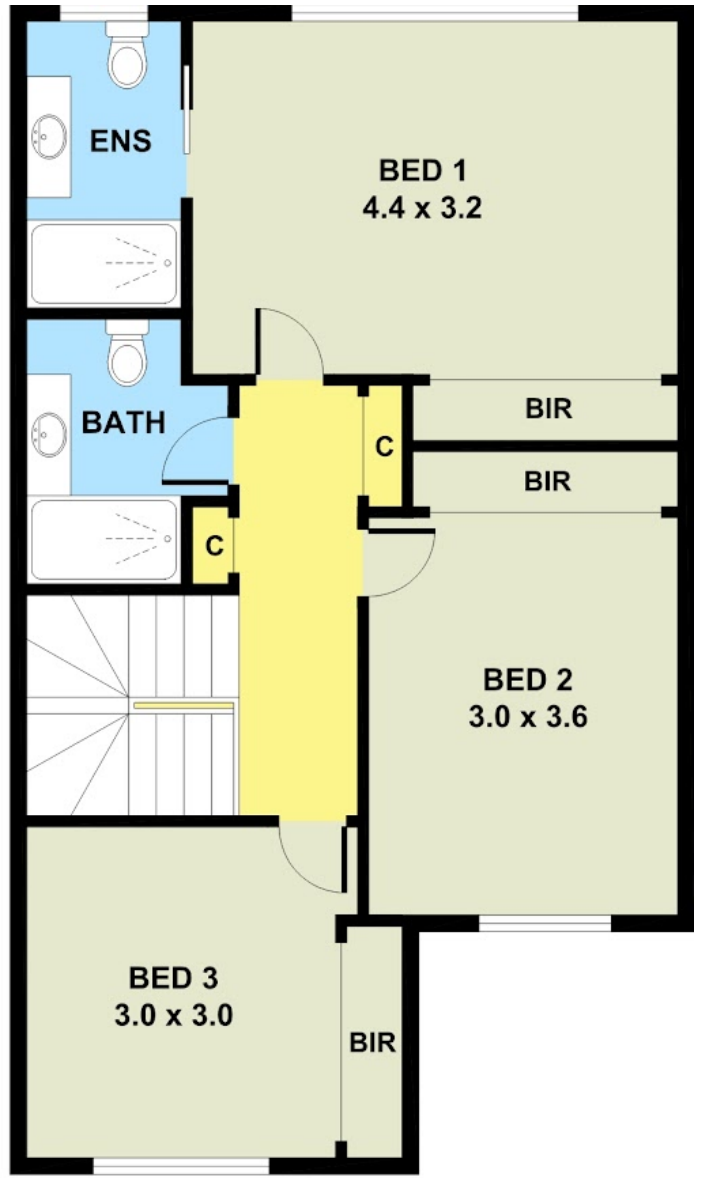
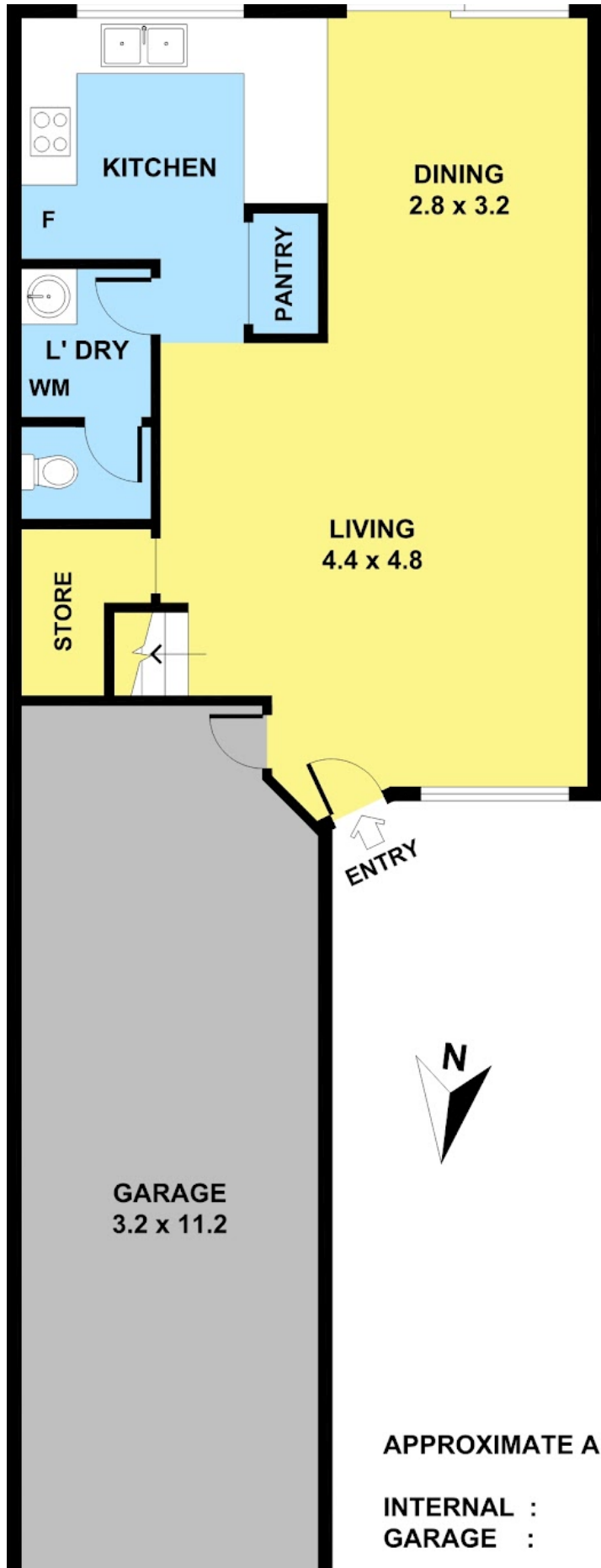
3 BED | 2 BATH | 2 CAR

PRICE:
\$504,000

OPEN FOR INSPECTION:
N/A



Gregg Hewitt
0413442229
gregg@atrealty.com.au
Gregg Hewitt



FIRST FLOOR

APPROXIMATE AREAS

INTERNAL : 103 m²
GARAGE : 35 m²

Disclaimer: Please note this floor plan is for marketing purposes and is to be used as a guide only. All dimensions are estimates only and may not be exact measurements.