



SOLD

A SURPRISE PACKAGE EXUDING CHARACTER ONLY 800M TO SHELLY BEACH

Get ready for the ultimate surprise package! Unassuming from the front this character filled home sits on a whopping 734m² block and is located within easy walking distance to Shelly Beach, Sea Acres Rainforest, and local convenience store. Unassuming from the front step inside from the quaint verandah and discover a high-ceilinged entry leading into a light filled lounge room with a feature double brick wall, durable flooring, raked timber beam ceiling, and a cosy wood fire. A modern rustic style kitchen and dining area also features raked ceilings and opens onto a full-length verandah overlooking a tropical oasis backyard. Privately tucked away on the other side of the home sits three large bedrooms with big windows and a versatile room suitable for a study or additional storage area. The main bathroom is gorgeous and includes feature tiles and a big corner spa bath. Downstairs is another domain suitable for a teenager's area, guest accommodation, or Airbnb. Accessible from upstairs and outdoors, this private area includes a bedroom with an adjoining dressing room, sliding robes, and a combined bathroom and laundry with a shower and WC. Designed for relaxed entertaining the backyard includes an inviting in-ground swimming pool, lush level lawn, and covered area flowing onto a sun-soaked terrace with a BBQ. There is room for a caravan, trailer, or additional vehicles, with side access to plentiful parking and a secure double garage. Should you choose, there is potential to modernise even further, add your own personal touch, and transform into the beach house of your dreams. Spacious, yet warm and inviting, this property has a great vibe and without doubt a home the whole family will love. Close to the beach, schools, cafes, rainforest, coastal headland, and only 10 minutes into the CBD,

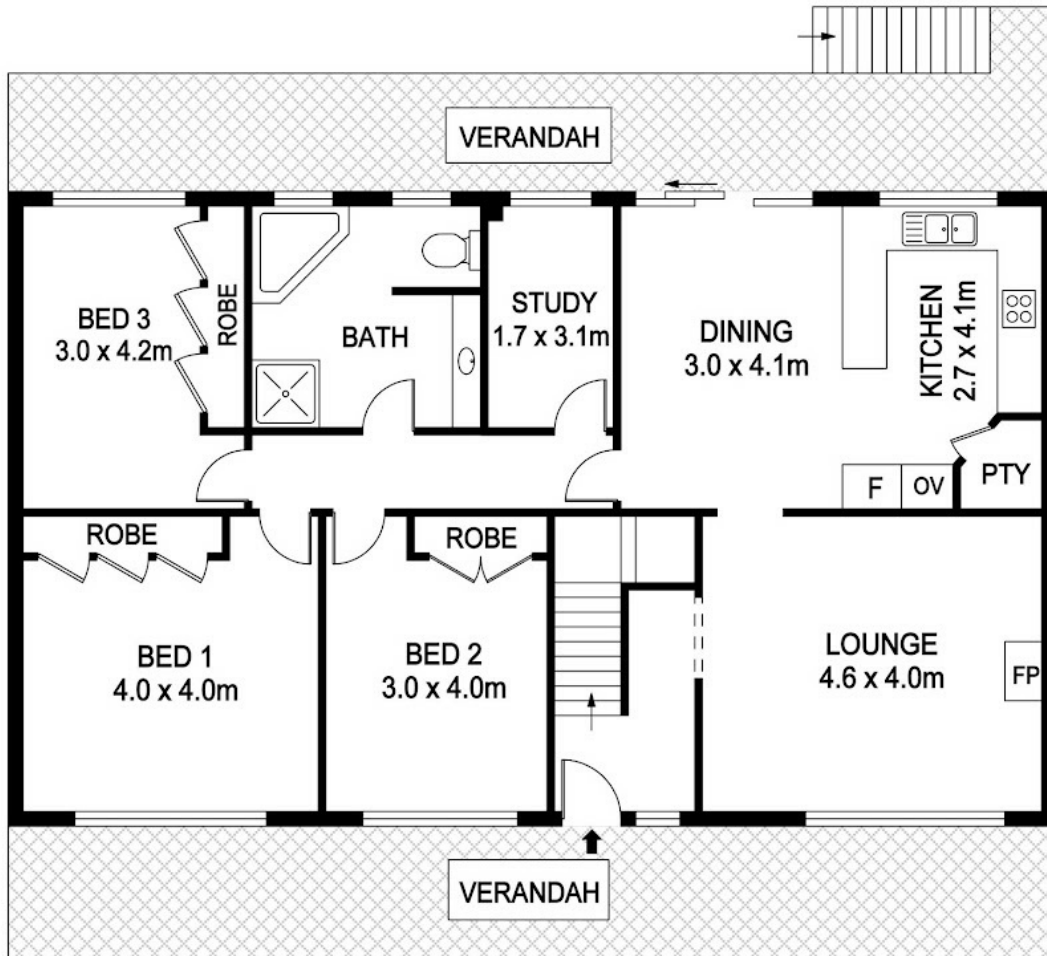
4 BED | 2 BATH | 2 CAR

PRICE:
\$837,500

OPEN FOR INSPECTION:
N/A



Sherryl Robinson
0412850322
sherrylrobinson@atrealty.com.au
www.atrealty.com.au



GROUND FLOOR



LOWER GROUND FLOOR

Disclaimer: Please note this floor plan is for marketing purposes and is to be used as a guide only. All dimensions are estimates only and may not be exact measurements.

DISCLAIMER

PLANS SHOWN ARE FOR MARKETING PURPOSES ONLY, ALL DIMENSIONS ARE APPROXIMATE AND NOT TO SCALE. THEY ARE SUBJECT TO ERRORS AND INACCURACIES AND NO LIABILITY WILL BE ACCEPTED. INTERESTED PARTIES SHOULD MAKE THEIR OWN INQUIRES.

Sherry Robinson
0412850322

sherryrobinson@atrealty.com.au

www.atrealty.com.au

