

**SOLD**

## STUNNING PALM COVE DUAL KEY APARTMENT - MANGO LAGOON RESORT - MINUTES TO THE BEACH

This large dual key Balinese inspired two bedroom apartment is a unique opportunity to own your own patch of paradise. Surrounded by lush tropical gardens and set on 2 acres, with 4 swimming pools and only minutes to the spectacular Palm Cove Beach.

Walking into the open plan living area you will feel like you are on holiday, with quality furniture throughout, light tones, split system air-conditioning and tiled living room floors, your comfort is assured.

Enjoy the views over the beautiful resort style swimming with the evergreen mountains in the background while simply enjoying a meal or entertaining friends in the well appointed dining area.

End your day with a glass of bubbly in the privacy of your courtyard, or simply enjoy the refreshing cool water of the pristine pool accessed directly via your courtyard. There are so many advantages to owning this beautiful property we have listed some of them below:

\*Dual Key Apartment - Provides you with the opportunity to have your own private home while receiving an income on the other self contained room, or your could purchase as an investment and rent both sides out proving a dual income.

\* Two large air conditioned bedrooms each with its own ensuite.

\* Palm Cove beach, restaurants, tavern, cafe's and shops are only a 15 minute stroll away from the resort.

\* Ground floor apartment which means no hiking up stairs or waiting on lifts.

\* Gardens, grounds and pools are maintained for you so no wasted weekends spent pruning, mowing and cleaning. You really will feel like you are permanently on holiday.

2 BED | 2 BATH | 1 CAR

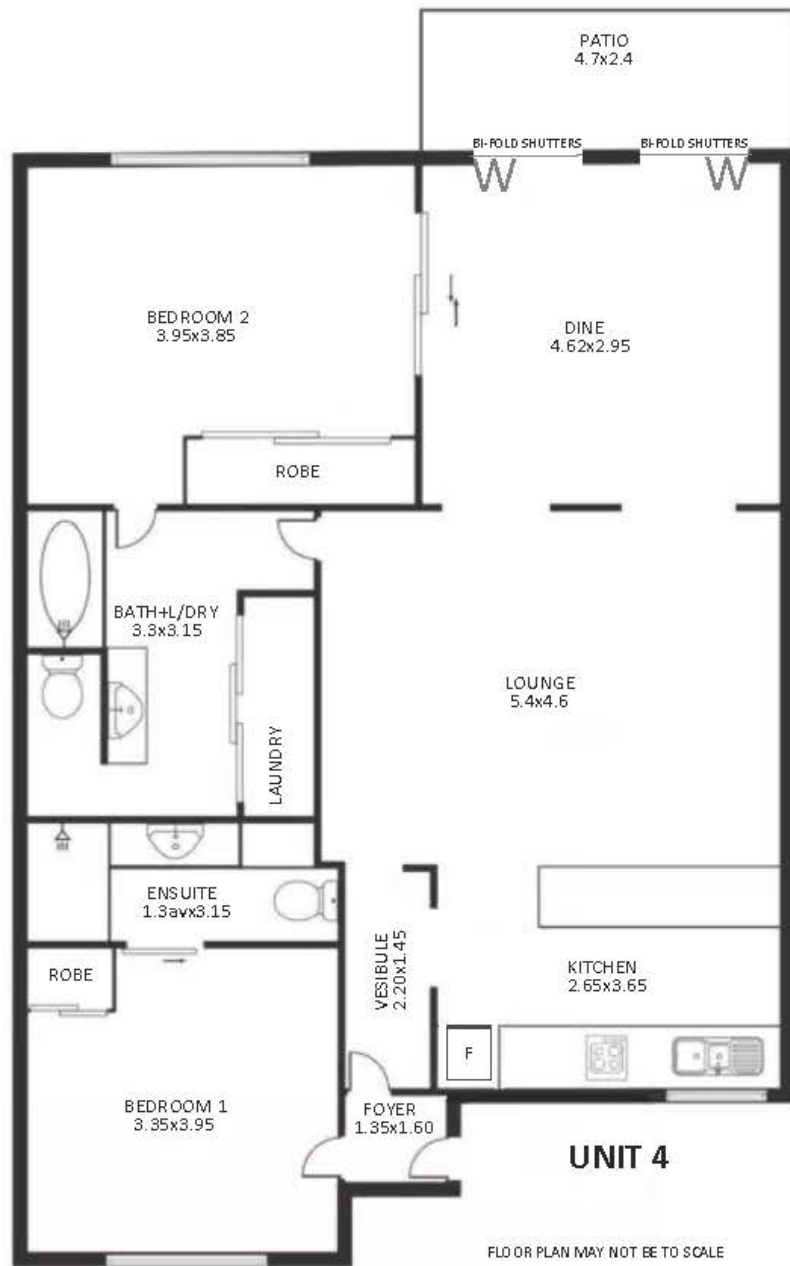
PRICE:  
\$350,000

OPEN FOR INSPECTION:  
N/A



**Sandy Knott**  
**0402458532**  
sandyk@atrealty.com.au  
[www.atrealty.com.au](http://www.atrealty.com.au)

LARGE SWIMMING POOL



Disclaimer: Please note this floor plan is for marketing purposes and is to be used as a guide only. All dimensions are estimates only and may not be exact measurements.