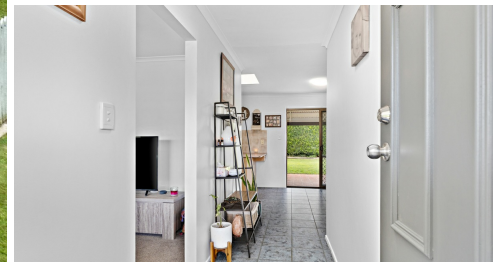


9 CALLAGHAN WAY, CAPALABA, QLD, 4157



SOLD

ENTERTAIN FAMILY & FRIENDS THIS SUMMER IN YOUR PRIVATE BACKYARD

GRAY Property Services would like to present this immaculate family home in Capalaba that is perfect for those wanting a traditional home on a large 783 sqm corner block where you can utilise the home space and surroundings to its best.

AT A GLANCE:

- Functional kitchen with electric appliances including dishwasher
- Separate lounge area with air conditioning
- Separate dining area
- Easy access to entertainment area from laundry, dining and study area
- Large Master bedroom with open plan wardrobe, fan and air conditioning
- The remaining 3 bedrooms are all good sized and offers built-in robes, ceiling fans and air conditioning
- Seperate office area
- Family bathroom with separate powder room
- Double garage with remote control access
- Laundry with second toilet. Close access to the pool area
- Fans throughout
- In-ground swimming pool in private setting
- Large covered entertainment area
- Back yard plenty of space for the children to play
- Security screens, intercom and alarm system
- Vacuum Maid
- Primary School Catchment: Coolnwynpin State School
- Secondary School Catchment: Capalaba State College

The location provides absolute convenience, with Ney Shopping Centre with all your essential needs across the road, Capalaba Sports Club, Capalaba CBD, Primary and High Schools only minutes drive away.

If this sounds like the home you are looking for please call Cameron to organise a suitable inspection time.

4 BED | 1 BATH | 2 CAR

PRICE:
\$718,000

OPEN FOR INSPECTION:
N/A



Cassandra and Cameron Gray
0431316679
cgray@atrealty.com.au
www.atrealty.com.au



Disclaimer: Please note this floor plan is for marketing purposes and is to be used as a guide only. All dimensions are estimates only and may not be exact measurements.

9 Callaghan Way, Capalaba 4157
TOTAL APPROX. FLOOR AREA 114 SQ.M

Cassandra and Cameron Gray
0431316679

cgray@atrealty.com.au

www.atrealty.com.au

